

WAAS CH 93934 W02A	APP CRS 021°	Rwy Ldg TDZE Apt Elev	5001 718 718
--	------------------------	-----------------------------	---

RNAV (GPS) RWY 2

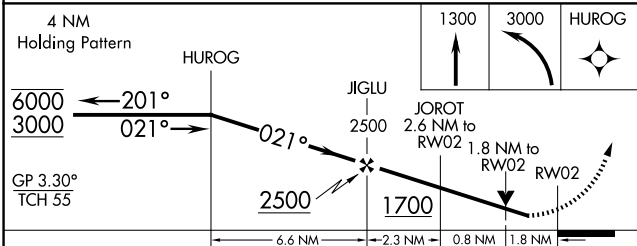
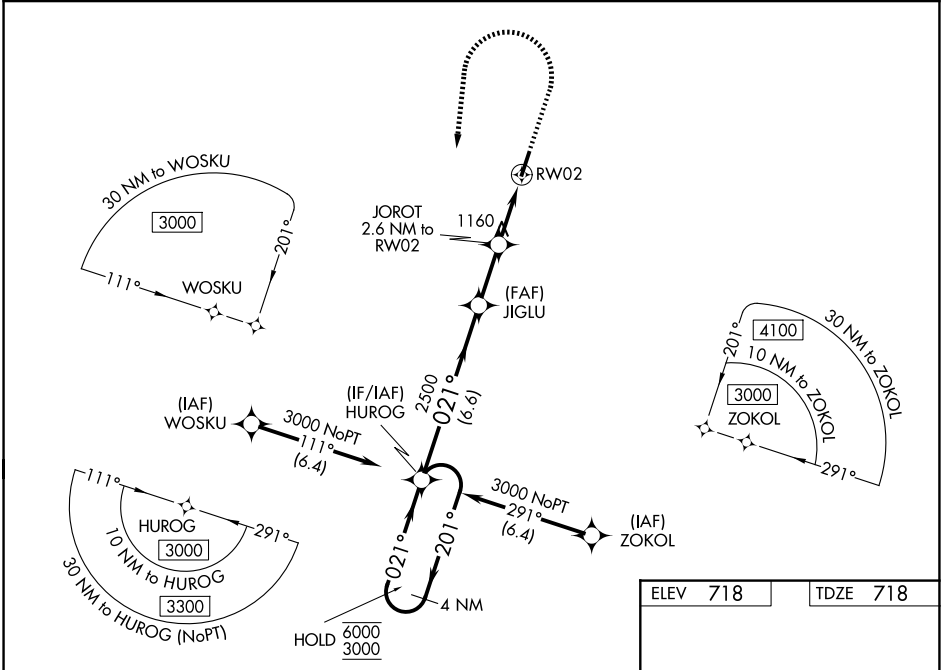
ELLINGTON (LUG)

RNP APCH - GPS.

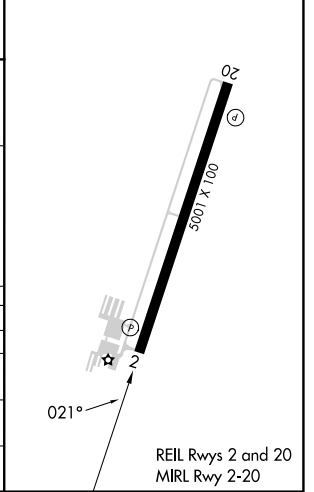
Baro-VNAV and VDP NA when using BNA altimeter setting. Circling Rwy 20 NA at night. Rwy 2 helicopter visibility reduction below 3/4 SM NA. When local altimeter setting not received, use BNA altimeter setting and increase LPV DA to 1096 feet and all visibilities 1/8 SM. Increase LNAV/VNAV DA to 1531 feet and all visibilities 1/2 SM. Increase all MDAs 120 feet and LNAV visibility Cat B 1/4 SM, Cats C and D 1/2 SM, Circling visibility Cats A and B 1/4 SM and Cat C 1/2 SM. For uncompensated Baro-VNAV systems, LNAV/VNAV NA below -16°C or above 54°C.

MISSED APPROACH:
Climb to 1300 then climbing left turn to 3000 direct HUROG and hold.

AWOS-3 135.775	MEMPHIS CENTER 128.15 323.125	UNICOM 122.8 (CTAF)
--------------------------	---	-------------------------------



ELEV 718	TDZE 718
----------	----------



CATEGORY	A	B	C	D
LPV DA	993-7/8	275 (300-7/8)		NA
LNAV/VNAV DA	1428-2	710 (800-2)		NA
LNAV MDA	1420-1	702 (800-1)	1420-2	702 (800-2)
CIRCLING	1420-1 702 (800-1)	1480-1 762 (800-1)	1540-2 1/2 822 (900-2 1/2)	1640-3 922 (1000-3)

SE-1, 14 MAY 2026 to 11 JUN 2026

SE-1, 14 MAY 2026 to 11 JUN 2026