

APP CRS 201°	Rwy Ldg 5001
	TDZE 710
	Apt Elev 718

RNAV (GPS) RWY 20

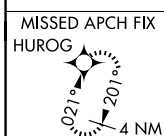
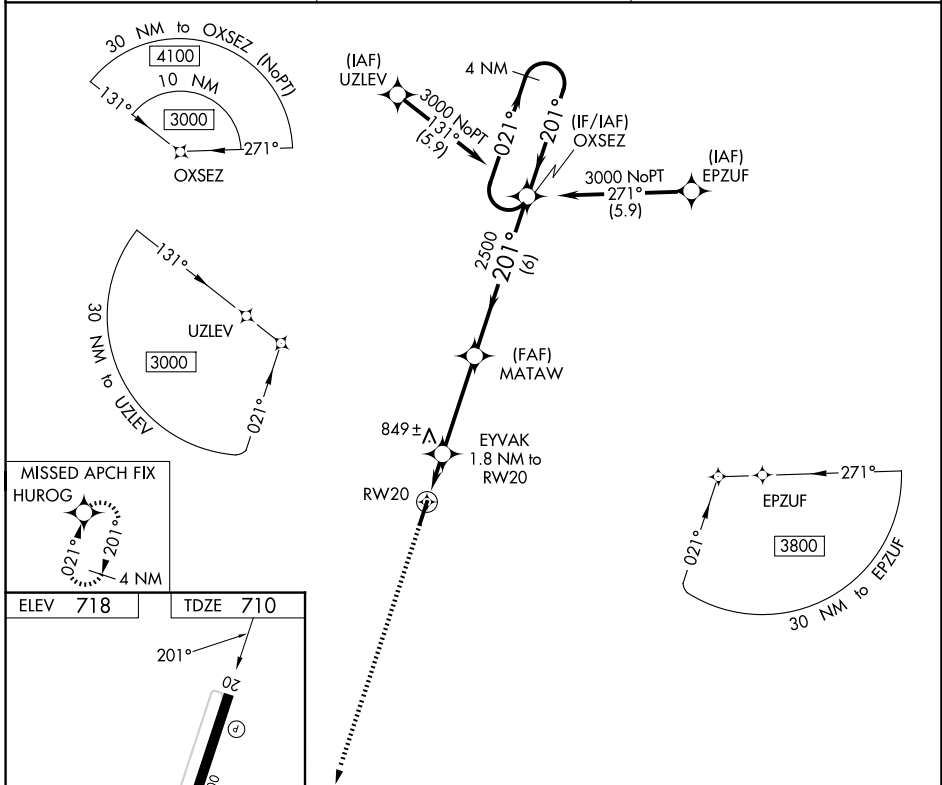
ELLINGTON (LUG)

RNP APCH-GPS.

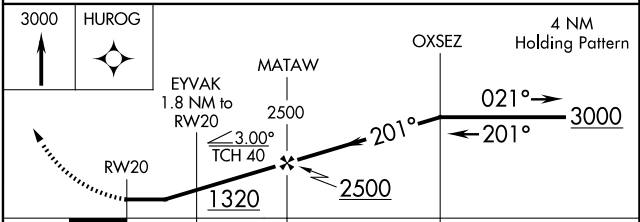
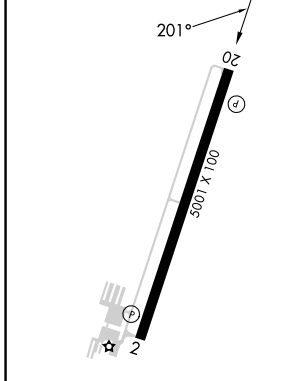
When local altimeter setting not received, use Nashville Intl altimeter setting and increase all MDA 120 feet and visibility LNAV Cats C and D and Circling Cats B and C ¼ SM. Circling to Rwy 2 NA at night. Straight-in Rwy 20 NA at night, Circling Rwy 20 NA at night. Rwy 20 helicopter visibility reduction below 1 SM NA.

MISSED APPROACH: Climb to 3000 direct HUROG and hold.

AWOS-3 135.775	MEMPHIS CENTER 128.15 323.125	UNICOM 122.8 (CTAF)
--------------------------	---	-------------------------------



ELEV 718	TDZE 710
----------	----------



CATEGORY	A	B	C	D
LNAV MDA	1100-1	390 (400-1)	1100-1½	390 (400-1½)
CIRCLING	1300-1 582 (600-1)	1480-1 762 (800-1)	1540-2½ 822 (900-2½)	1640-3 922 (1000-3)

SE-1, 14 MAY 2026 to 11 JUN 2026

SE-1, 14 MAY 2026 to 11 JUN 2026