

# BLTWY SEVEN DEPARTURE (RNAV)

CTAF  
122.7  
HOUSTON DEP CON  
128.6 360.85

**TOP ALTITUDE:  
ASSIGNED BY ATC**

NOTE: RADAR required.  
NOTE: DME/DME/IRU or GPS required.  
NOTE: RNAV 1.

TAKEOFF MINIMUMS

Rwy 14, 32: Standard with minimum  
climb of 500' per NM to 600.

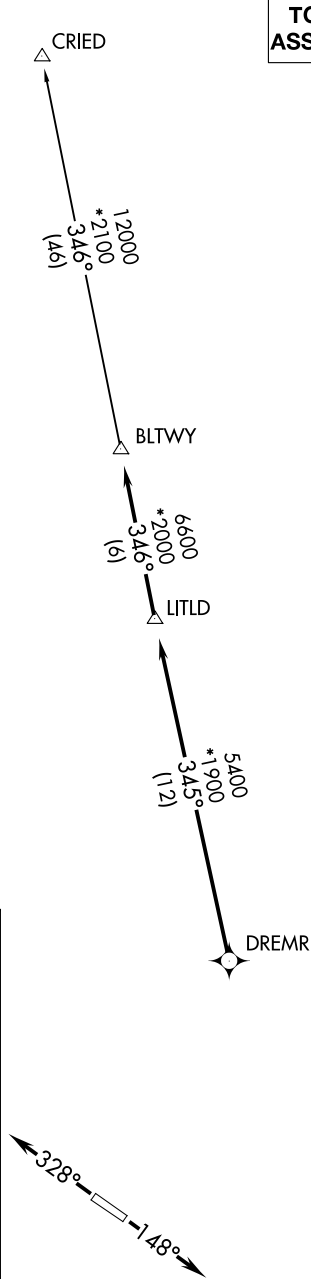
**▼ DEPARTURE ROUTE DESCRIPTION**

TAKEOFF RUNWAY 14: Climb on heading 148° or as assigned by ATC for RADAR vectors to DREMR, thence . . . .

TAKEOFF RUNWAY 32: Climb on heading 328° or as assigned by ATC for RADAR vectors to DREMR, thence . . . .

...on track 345° to LITLD, then on track 346° to BLTWY, then on (transition). Maintain ATC assigned altitude. Expect filed altitude 10 minutes after departure.

CRIED TRANSITION (BLTWY7.CRIED)



SC-5, 14 MAY 2026 to 11 JUN 2026

SC-5, 14 MAY 2026 to 11 JUN 2026