

APP CRS 315°	Rwy Ldg 5812
	TDZE 42
	Apt Elev 46

RNAV (GPS) RWY 31

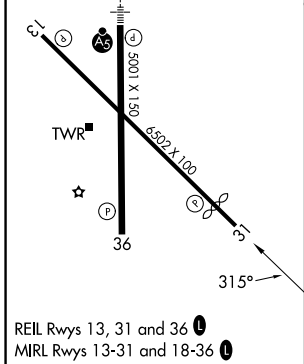
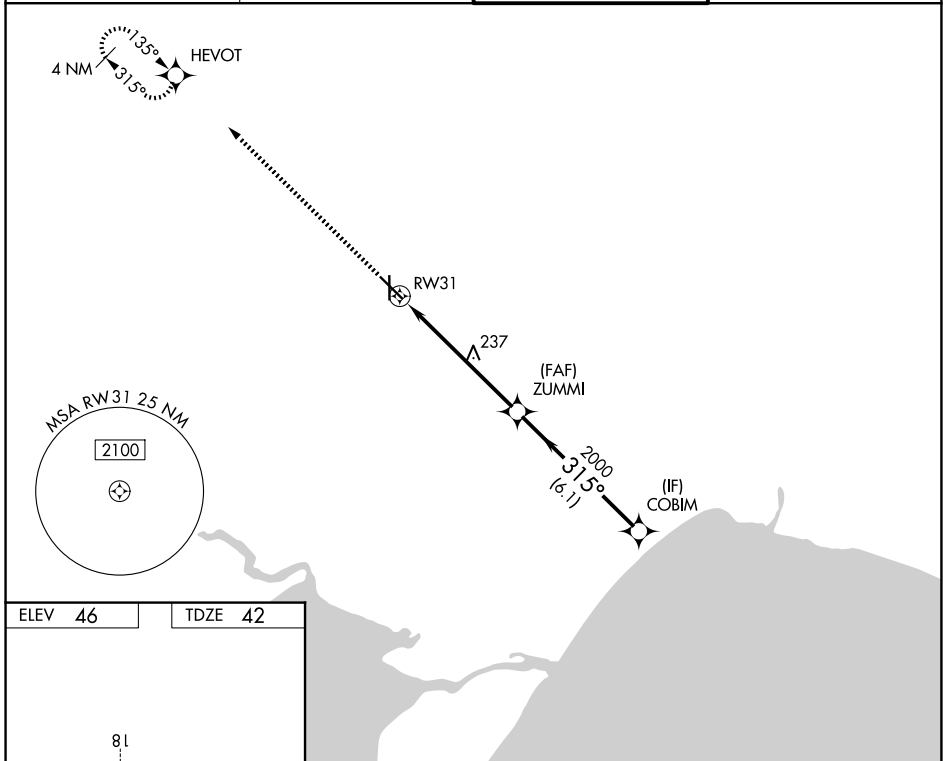
HAMMOND NORTHSORE RGNL (HDC)

RNP APCH - GPS.

⚠ Rwy 31 helicopter visibility reduction below 3/4 SM NA. VDP NA when using Louis Armstrong New Orleans Intl altimeter setting. When local altimeter setting not received, use Louis Armstrong New Orleans Intl altimeter setting and increase all MDAs 100 feet and LNAV visibility Cat C/D 1/2 SM, and Circling visibility Cat C/D 1/2 SM.

MISSED APPROACH:
Climb to 2000 direct HEVOT and hold.

ATIS 118.325	NEW ORLEANS APP CON 119.3 350.35	HAMMOND TOWER ★ 120.575 (CTAF) 0	GND CON 119.85
------------------------	--	--	--------------------------



2000	HEVOT	ZUMMI	COBIM
↑	✦		
1.2 NM	4.8 NM	6.1 NM	
CATEGORY	A	B	C
LNAV MDA	500-1	458 (500-1)	500-1 3/8
CIRCLING	500-1	454 (500-1)	620-1 1/2
			920-2 3/4

315°

2000

315°

2000

1.2 NM to RW31

3.05° TCH 50

VGSI and descent angles not coincident (VGSI Angle 3.30/TCH 56).

SC-4, 14 MAY 2026 to 11 JUN 2026

SC-4, 14 MAY 2026 to 11 JUN 2026