

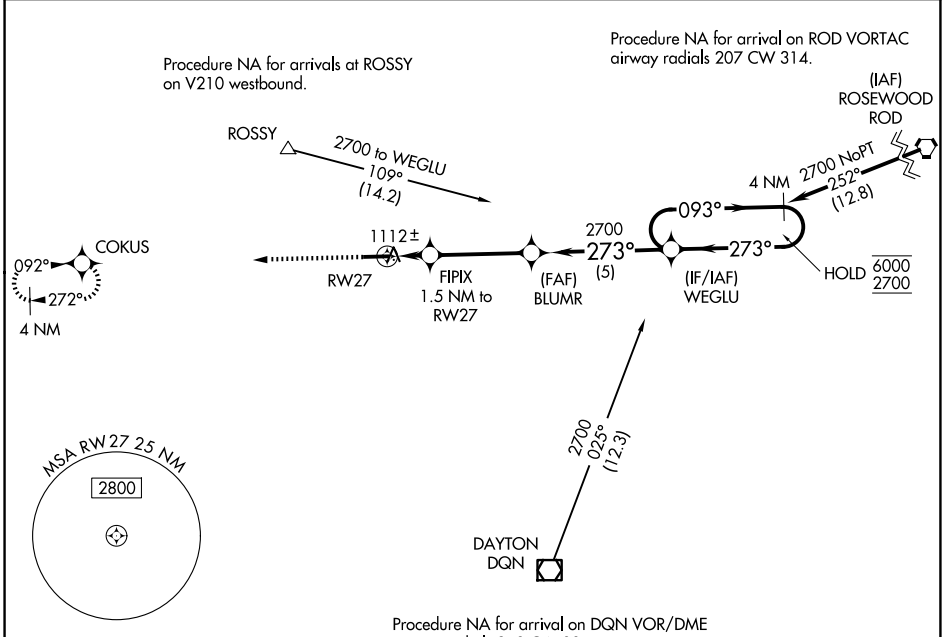
WAAS CH 86243 W27A	APP CRS 273°	Rwy Ldg TDZE Apt Elev	4802 1007 1007
---------------------------------	------------------------	-----------------------------	---

RNAV (GPS) RWY 27

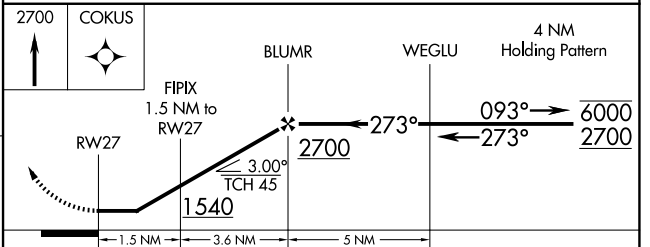
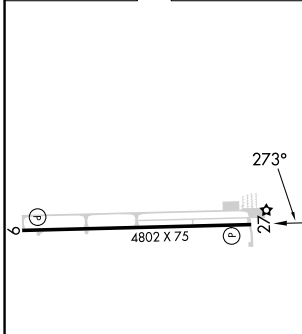
DARKE COUNTY (VES)

RNP APCH. ▼ Rwy 27 helicopter visibility reduction below 1 SM NA. Straight-in Rwy 27 NA at night, Circling Rwy 27 NA at night.	MISSED APPROACH: Climb to 2700 direct COKUS and hold.
--	---

AWOS-3PT 125.9	COLUMBUS APP CON 134.45 352.05	UNICOM 122.8 (CTAF) ①
--------------------------	--	---------------------------------



ELEV 1007	TDZE 1007
-----------	-----------



CATEGORY	A	B	C	D
LP MDA		1380-1 373 (400-1)		NA
LNAV MDA		1380-1 373 (400-1)		NA
CIRCLING	1440-1 433 (500-1)	1480-1 473 (500-1)	1660-1¾ 653 (700-1¾)	NA

REIL Rwy 9 and 27 ①
MIRL Rwy 9-27 ①

EC-2, 14 MAY 2026 to 11 JUN 2026

EC-2, 14 MAY 2026 to 11 JUN 2026