

ALIAN TWO DEPARTURE (RNAV)
(ALIAN2,ALIAN) 04FEB16

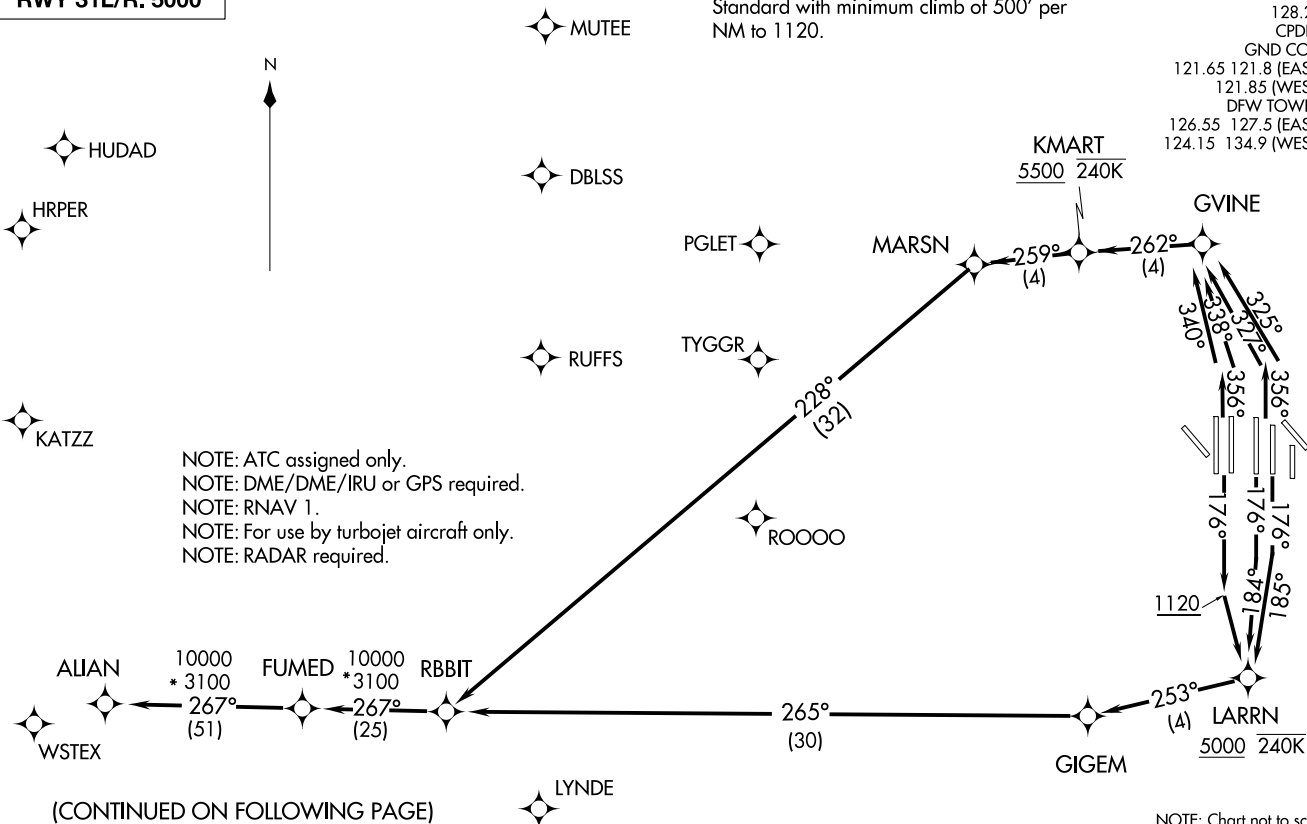
DALLAS-FORT WORTH, TEXAS
DALLAS-FORT WORTH INTL (DFW)

TOP ALTITUDE:
RWY 17C/R, 18L/R,
35C/L, 36L/R: 10000
RWY 31L/R: 5000

TAKEOFF MINIMUMS

Rwys 31L/R: Standard.
Rwys 17C/R, 18L/R, 35L/C, 36L/R:
Standard with minimum climb of 500' per
NM to 1120.

LONE STAR DEP CON 126.475 363.15
D-ATIS DEP 135.925
CLNC DEL 128.25
CPDLC
GND CON 121.65 121.8 (EAST)
121.85 (WEST)
DFW TOWER 126.55 127.5 (EAST)
124.15 134.9 (WEST)



NOTE: ATC assigned only.
NOTE: DME/DME/IRU or GPS required.
NOTE: RNAV 1.
NOTE: For use by turbojet aircraft only.
NOTE: RADAR required.

(CONTINUED ON FOLLOWING PAGE)

NOTE: Chart not to scale

(ALIAN2,ALIAN) 24305
ALIAN TWO DEPARTURE (RNAV)

AL-6039 (FAA)

DALLAS-FORT WORTH INTL (DFW)
DALLAS-FORT WORTH, TEXAS



DEPARTURE ROUTE DESCRIPTION

TAKEOFF RWY 17C: Climb heading 176° to intercept course 185° to cross LARRN at or above 5000, then on track 253° to GIGEM, then on track 265° to RBBIT, thence. . . .

TAKEOFF RWY 17R: Climb heading 176° to intercept course 184° to cross LARRN at or above 5000, then on track 253° to GIGEM, then on track 265° to RBBIT, thence. . . .

TAKEOFF RWY 18L/R: Climb heading 176° to 1120, then direct to cross LARRN at or above 5000, then on track 253° to GIGEM, then on track 265° to RBBIT, thence. . . .

TAKEOFF RWY 35C: Climb heading 356° to intercept course 325° to GVINE, then on track 262° to cross KMART at or above 5500, then on track 259° to MARSN, then on track 228° to RBBIT, thence. . . .

TAKEOFF RWY 35L: Climb heading 356° to intercept course 327° to GVINE, then on track 262° to cross KMART at or above 5500, then on track 259° to MARSN, then on track 228° to RBBIT, thence. . . .

TAKEOFF RWY 36L: Climb heading 356° to intercept course 340° to GVINE, then on track 262° to cross KMART at or above 5500, then on track 259° to MARSN, then on track 228° to RBBIT, thence. . . .

TAKEOFF RWY 36R: Climb heading 356° to intercept course 338° to GVINE, then on track 262° to cross KMART at or above 5500, then on track 259° to MARSN, then on track 228° to RBBIT, thence. . . .

. . . .on track 267° to FUMED, then on track 267° to ALIAN.
Maintain 10000, expect filed altitude ten minutes after departure.

TAKEOFF RWY 31L/R: Climb heading assigned by ATC, expect radar vectors to RBBIT, thence. . . .

. . . .on track 267° to FUMED, then on track 267° to ALIAN.
Maintain 5000, expect filed altitude ten minutes after departure.

SC-2, 14 MAY 2026 to 11 JUN 2026

SC-2, 14 MAY 2026 to 11 JUN 2026