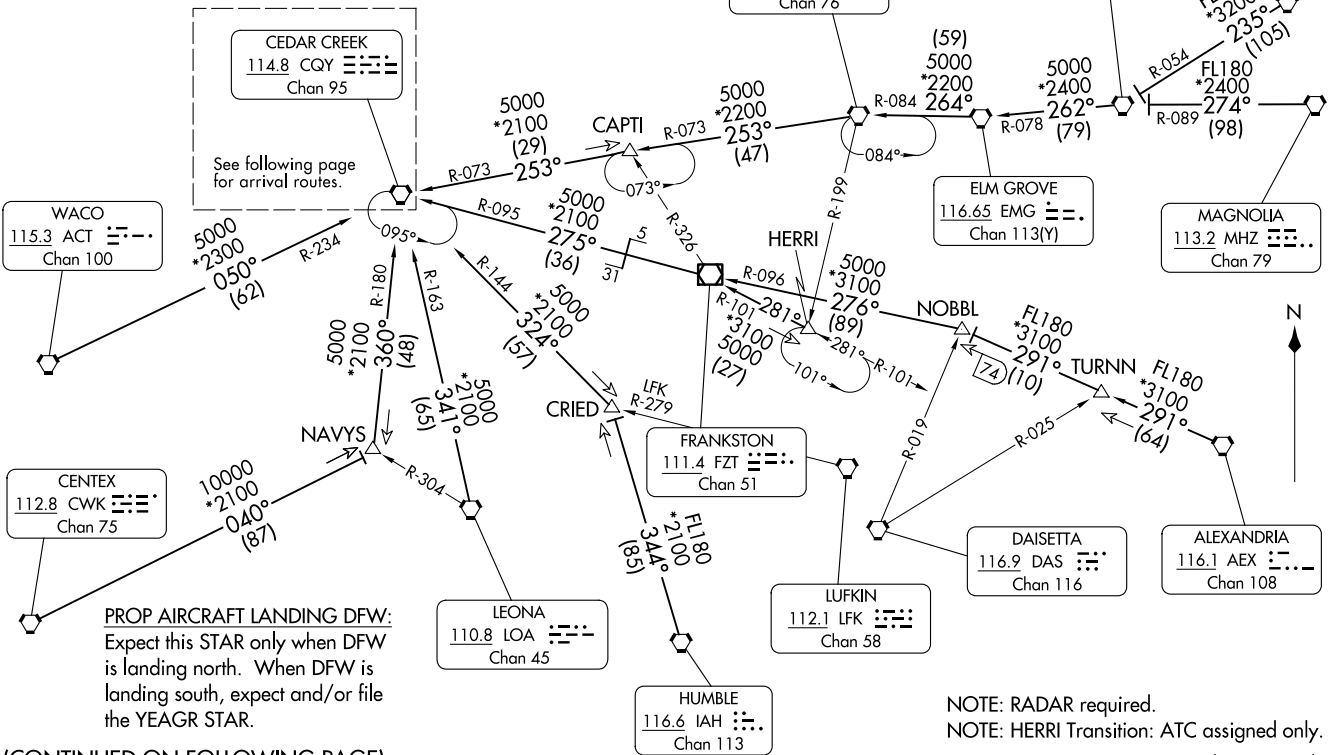


LONE STAR APP CON  
125.025 133.525 263.025  
D-ATIS ARR  
123.775



**PROP AIRCRAFT LANDING DFW:**  
Expect this STAR only when DFW is landing north. When DFW is landing south, expect and/or file the YEAGR STAR.

NOTE: RADAR required.  
NOTE: HERRI Transition: ATC assigned only.  
NOTE: Chart not to scale.

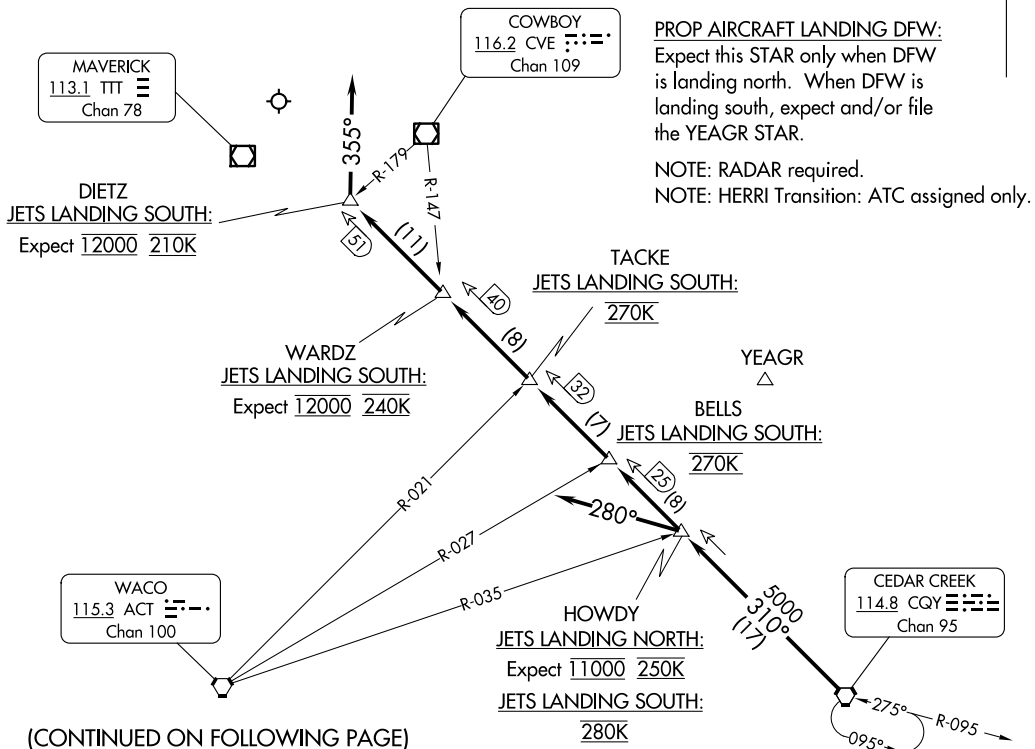
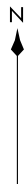
(CONTINUED ON FOLLOWING PAGE)

LONE STAR APP CON  
125.025 133.525 263.025  
D-ATIS ARR  
123.775

CEDAR CREEK THREE ARRIVAL  
(COY, COY3) 11JUL24

Arrival Routes

DALLAS-FORT WORTH, TEXAS  
DALLAS-FORT WORTH INTL (DFW)



**PROP AIRCRAFT LANDING DFW:**  
Expect this STAR only when DFW is landing north. When DFW is landing south, expect and/or file the YEAGR STAR.

NOTE: RADAR required.  
NOTE: HERRI Transition: ATC assigned only.

(CONTINUED ON FOLLOWING PAGE)

Note: Chart not to scale.

(COY, COY3) 24305  
CEDAR CREEK THREE ARRIVAL

AL-6039 (FAA)  
Arrival Routes

DALLAS-FORT WORTH INTL (DFW)  
DALLAS-FORT WORTH, TEXAS

# CEDAR CREEK THREE ARRIVAL

## ARRIVAL ROUTE DESCRIPTION

ALEXANDRIA TRANSITION (AEX.CQY3): From over AEX VORTAC on AEX R-291 to NOBBL, then on FZT R-096 to FZT VOR/DME, then on FZT R-275 and CQY R-095 to CQY VORTAC. Thence. . . .

CENTEX TRANSITION (CWK.CQY3): From over CWK VORTAC on CKW R-040 to NAVYS, then on CQY R-180 to CQY VORTAC. Thence. . . .

ELM GROVE TRANSITION (EMG.CQY3): From over EMG VORTAC on EMG R-264 and GGG R-084 to GGG VORTAC, then on GGG R-253 and CQY R-073 to CAPTI, then on CQY R-073 to CQY VORTAC. Thence. . . .

GREGG COUNTY TRANSITION (GGG.CQY3): From over GGG VORTAC on GGG R-253 and CQY R-073 to CAPTI, then on CQY R-073 to CQY VORTAC. Thence. . . .

HERRI TRANSITION (HERRI.CQY3): From over HERRI on FZT R-101 to FZT VOR/DME, then on FZT R-275 and CQY R-095 to CQY VORTAC. Thence. . . .

HUMBLE TRANSITION (IAH.CQY3): From over IAH VORTAC on IAH R-344 to CRIED, then on CQY R-144 to CQY VORTAC. Thence. . . .

LEONA TRANSITION (LOA.CQY3): From over LOA VORTAC on LOA R-341 and CQY R-163 to CQY VORTAC. Thence. . . .

MAGNOLIA TRANSITION (MHZ.CQY3): From over MHZ VORTAC on MHZ R-274 and MLU R-089 to MLU VORTAC, then on MLU R-262 and EMG R-078 to EMG VORTAC, then on EMG R-264 and GGG R-084 to GGG VORTAC, then on GGG R-253 and CQY R-073 to CAPTI, then on CQY R-073 to CQY VORTAC. Thence. . . .

MONROE TRANSITION (MLU.CQY3): From over MLU VORTAC on MLU R-262 and EMG R-078 to EMG VORTAC, then on EMG R-264 and GGG R-084 to GGG VORTAC, then on GGG R-253 and CQY R-073 to CAPTI, then on CQY R-073 to CQY VORTAC. Thence. . . .

NAVYS TRANSITION (NAVYS.CQY3): From over NAVYS on CQY R-180 to CQY VORTAC. Thence. . . .

SIDON TRANSITION (SQS.CQY3): From over SQS VORTAC on SQS R-235 and MLU R-054 to MLU VORTAC, then on MLU R-262 and EMG R-078 to EMG VORTAC, then on EMG R-264 and GGG R-084 to GGG VORTAC, then on GGG R-253 and CQY R-073 to CAPTI, then on CQY R-073 to CQY VORTAC. Thence. . . .

WACO TRANSITION (ACT.CQY3): From over ACT VORTAC on ACT R-050 and CQY R-234 to CQY VORTAC. Thence. . . .

From over CQY VORTAC on CQY R-310. Thence. . . .

. . . JETS LANDING NORTH: To HOWDY. Depart heading 280°, expect RADAR vectors to final.

. . . JETS LANDING SOUTH: To DIETZ. Depart heading 355°, expect RADAR vectors to final.

. . . PROP AIRCRAFT LANDING NORTH: To TACKE. Expect vectors to final approach course.

SC-2, 14 MAY 2026 to 11 JUN 2026

SC-2, 14 MAY 2026 to 11 JUN 2026