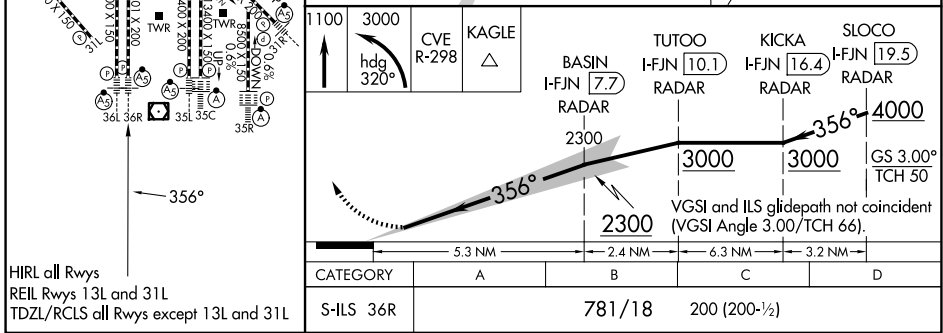
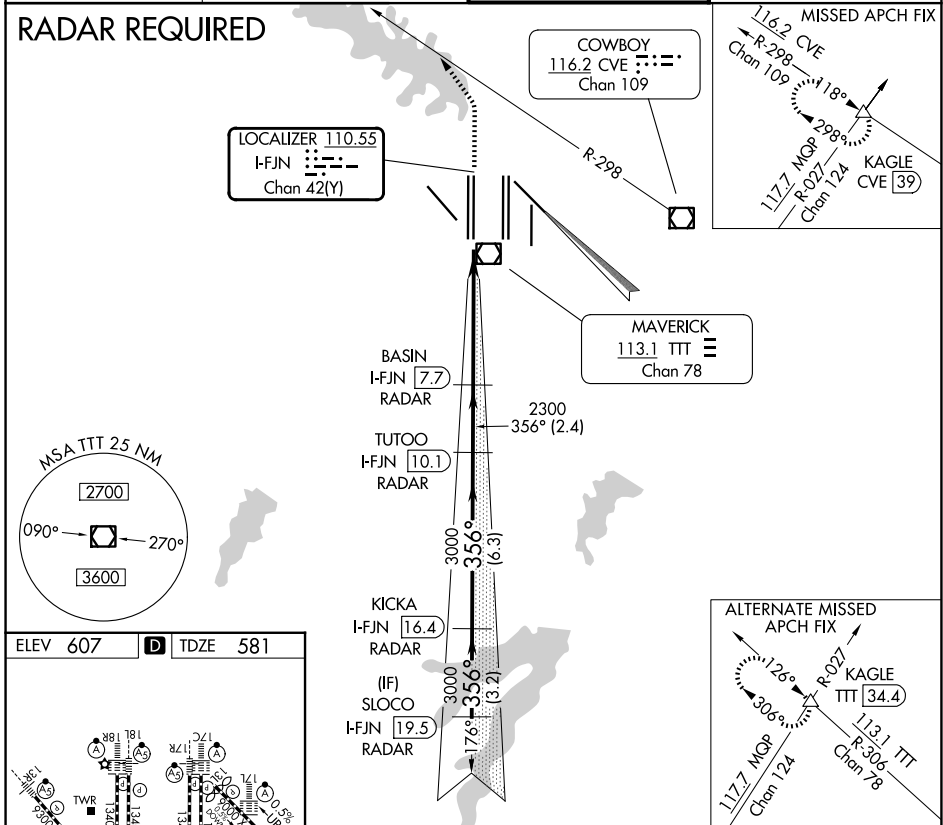


LOC/DME I-FJN 110.55 Chan 42 (Y)	APP CRS 356°	Rwy Ldg TDZE 13401 581	Apt Elev 607
--	------------------------	--	------------------------

CONVERGING ILS RWY 36R

DALLAS-FORT WORTH INTL (DFW)

<p>Simultaneous approach authorized with Converging ILS Rwy 31R. DME or Radar required.</p>		<p>MAISLR</p>	<p>MISSED APPROACH: Climb to 1100, then climbing left turn to 3000 on heading 320° and CVE VOR/DME R-298 to KAGLE INT/CVE 39 DME and hold.</p>
D-ATIS 123.775	LONE STAR APP CON 118.425	DFW TOWER 126.55 127.5 (E) 124.15 134.9 (W)	GND CON 121.65 121.8 (E) 121.85 (W)



SC-2, 14 MAY 2026 to 11 JUN 2026

SC-2, 14 MAY 2026 to 11 JUN 2026