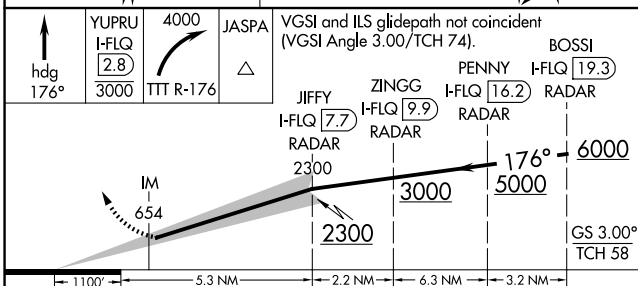
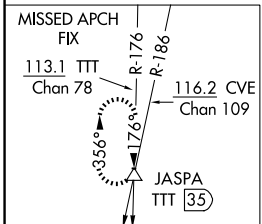
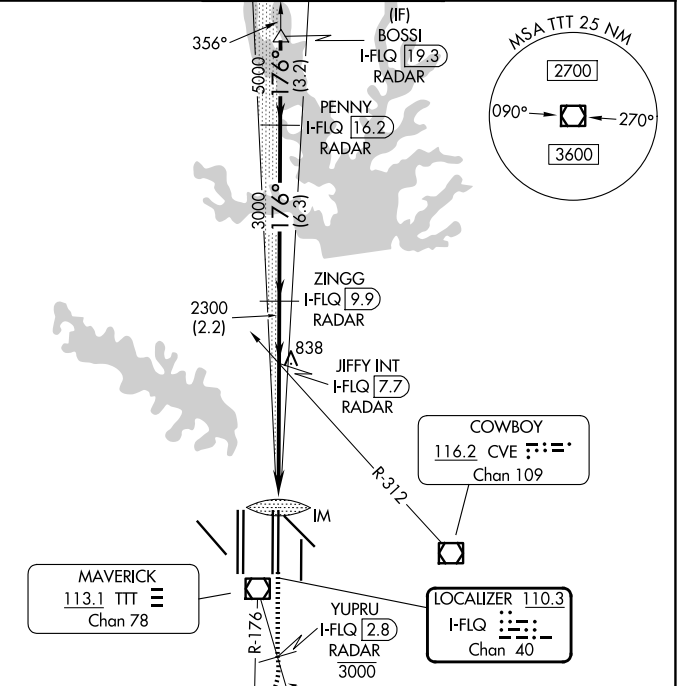
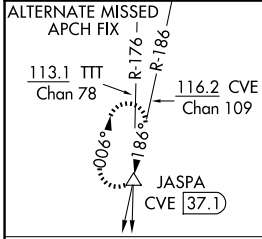


LOC/DME I-FLQ 110.3 Chan 40	APP CRS 176°	Rwy Ldg TDZE Apt Elev	13400 562 607
---	------------------------	-----------------------------	--

ILS RWY 17C (CAT II & III)

DALLAS-FORT WORTH INTL (DFW)

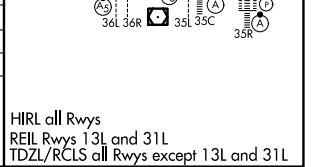
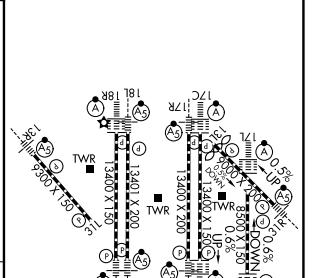
DME and RADAR required.		ALSF-2 	MISSED APPROACH: Climb on heading 176° to cross YUPRU/2.8 DME/RADAR at or below 3000, then climbing right turn to 4000 on TTT VOR/DME R-176 to JASPA/TTT 35 DME and hold.	
Simultaneous approach authorized with Rwy 17L, 18L/R.				
D-ATIS 123.775	LONE STAR APP CON 127.075	DFW TOWER 126.55 127.5 (E) 124.15 134.9 (W)	GND CON 121.65 121.8 (E) 121.85 (W)	



CATEGORY	A	B	C	D
S-ILS 17C	CAT II RA 102/12 100 DA 662			
S-ILS 17C	CAT III RVR 06			

CATEGORY II & III ILS - SPECIAL AIRCREW & AIRCRAFT CERTIFICATION REQUIRED

ELEV 607	D	TDZE 562
----------	---	----------



SC-2, 14 MAY 2026 to 11 JUN 2026

SC-2, 14 MAY 2026 to 11 JUN 2026

HIRL all Rwys
REIL Rwys 13L and 31L
TDZL/RCLS all Rwys except 13L and 31L