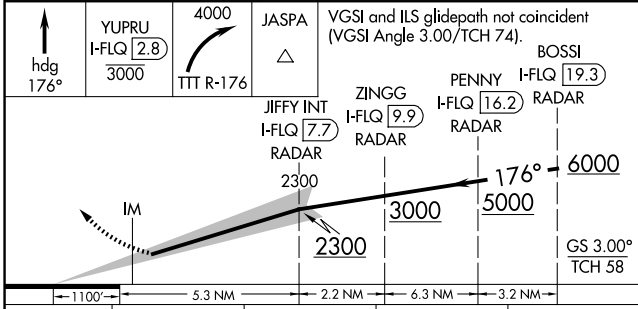
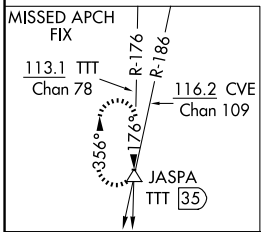
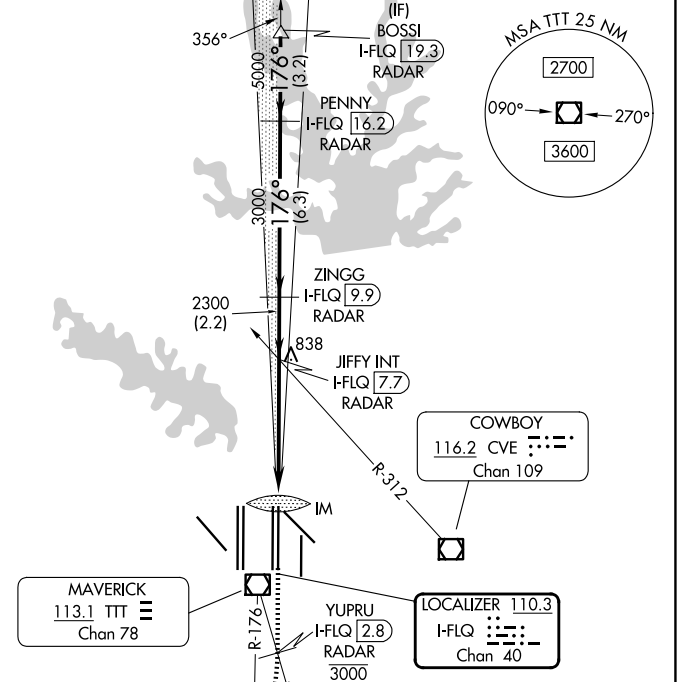
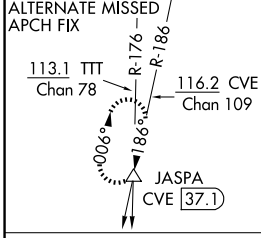


LOC/DME I-FLQ <b>110.3</b> Chan <b>40</b>	APP CRS <b>176°</b>	Rwy Ldg TDZE Apt Elev	<b>13400</b> <b>562</b> <b>607</b>
-------------------------------------------------	------------------------	-----------------------------	------------------------------------------

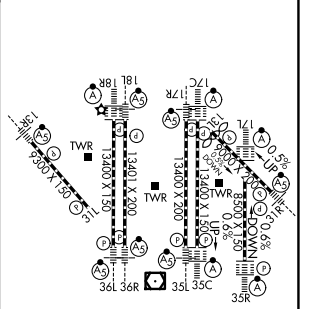
# ILS RWY 17C (SA CAT I)

## DALLAS-FORT WORTH INTL (DFW)

DME and RADAR required.		ALSF-2 	MISSED APPROACH: Climb on heading 176° to cross YUPRU/2.8 DME/RADAR at or below 3000, then climbing right turn to 4000 on TTT VOR/DME R-176 to JASPA/TTT 35 DME and hold.	
Simultaneous approach authorized with Rwy 17L, 18L/R. Requires specific OPSPEC, MSPEC, or LOA approval and use of HUD to DA.				
D-ATIS <b>123.775</b>	LONE STAR APP CON <b>127.075</b>	DFW TOWER <b>126.55 127.5</b> (E) <b>124.15 134.9</b> (W)		GND CON <b>121.65 121.8</b> (E) <b>121.85</b> (W)



ELEV 607	<b>D</b> TDZE 562
----------	-------------------



CATEGORY	A	B	C	D
S-ILS 17C	RA 144/14 150 DA 712			
<b>SA CATEGORY I ILS - SPECIAL AIRCREW &amp; AIRCRAFT CERTIFICATION REQUIRED</b>				

HIRL all Rwws  
 REIL Rwws 13L and 31L  
 TDZL/RCLS all Rwws except 13L and 31L

SC-2, 14 MAY 2026 to 11 JUN 2026

SC-2, 14 MAY 2026 to 11 JUN 2026