

LOC/DME I-PPZ <b>111.75</b> Chan <b>54</b> (Y)	APP CRS <b>176°</b>	Rwy Ldg <b>8500</b> TDZE <b>545</b> Apt Elev <b>607</b>
------------------------------------------------------	------------------------	---------------------------------------------------------------

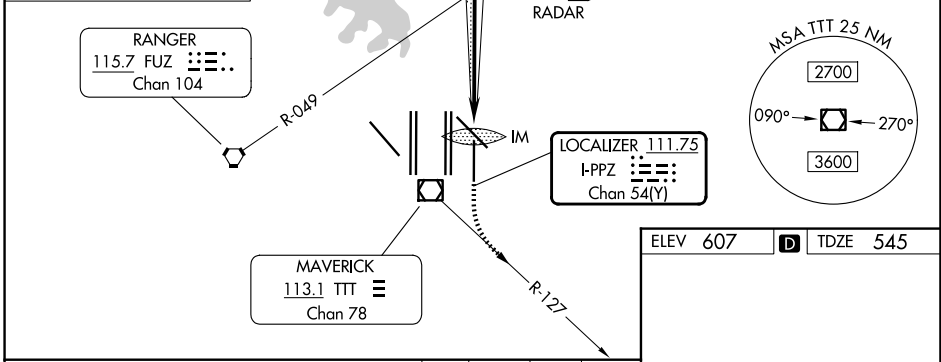
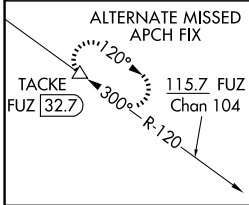
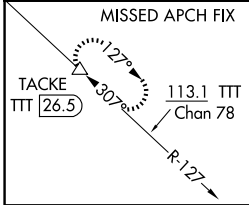
# ILS RWY 17L (SA CAT I)

DALLAS-FORT WORTH INTL (DFW)

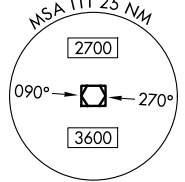
Simultaneous approach authorized with Rwy 17C/R and Rwy 18L/R. DME required. Requires specific OPSPEC, MSPEC, or LOA approval and use of HUD to DA.

ALSF-2  
MISSED APPROACH: Climb to 1020 then climbing left turn to 3000 on heading 151° and TTT VOR/DME R-127 to TACKE/TTT 26.5 DME and hold.

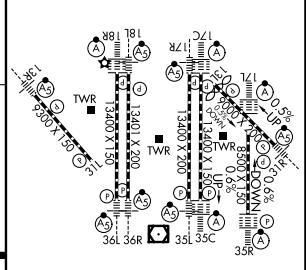
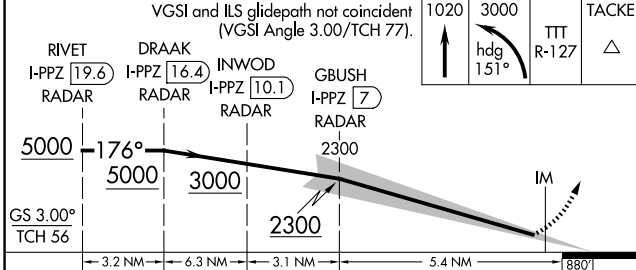
D-ATIS <b>123.775</b>	LONE STAR APP CON <b>119.4</b>	DFW TOWER <b>126.55 127.5</b> (E) <b>124.15 134.9</b> (W)	GND CON <b>121.65 121.8</b> (E) <b>121.85</b> (W)
--------------------------	-----------------------------------	-----------------------------------------------------------------	---------------------------------------------------------



**RADAR REQUIRED**



ELEV 607	TDZE 545
----------	----------



CATEGORY	A	B	C	D
S-ILS 17L	RA 165/14 150 DA 695			
<b>SA CATEGORY I ILS - SPECIAL AIRCREW &amp; AIRCRAFT CERTIFICATION REQUIRED</b>				

HIREL all Rwys  
REIL Rwy 13L and 31L  
TDZL/RCLS all Rwys except 13L and 31L

SC-2, 14 MAY 2026 to 11 JUN 2026

SC-2, 14 MAY 2026 to 11 JUN 2026