

LOC/DME I-VYIN 111.9 Chan 56	APP CRS 176°	Rwy Ldg TDZE Apt Elev 13400 607 607
--	------------------------	---

ILS RWY 18R (CAT II & III)

DALLAS-FORT WORTH INTL (DFW)

⚠ DME or RADAR required. Simultaneous approach authorized with Rwy 17 L/C/R.



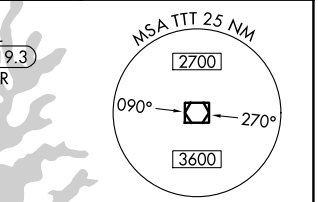
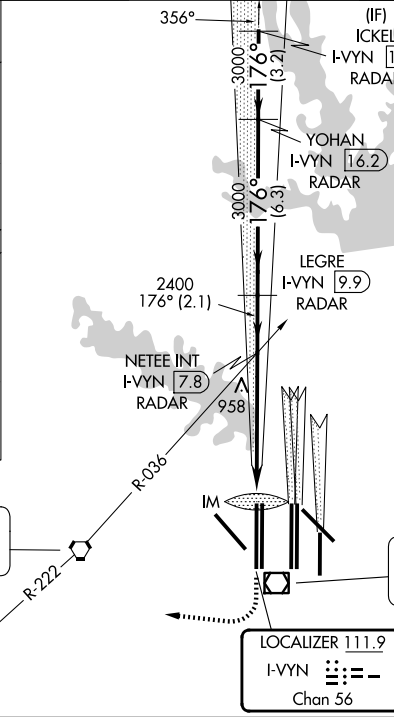
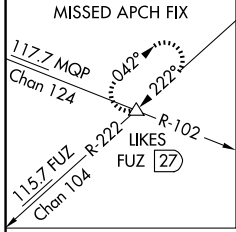
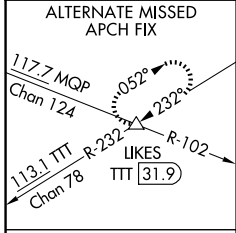
MISSED APPROACH: Climb to 1100 then climbing right turn to 3000 on heading 250° and FUZ VORTAC R-222 to LIKES INT/FUZ VORTAC 27 DME and hold.

D-ATIS 123.775

LONE STAR APP CON 118.425

DFW TOWER 126.55 127.5 (E) 124.15 134.9 (W)

GND CON 121.65 121.8 (E) 121.85 (W)
--



RADAR REQUIRED

RANGER
115.7 FUZ
Chan 104

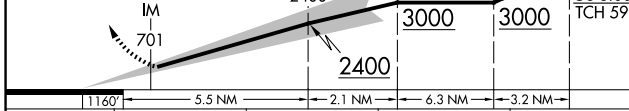
MAVERICK
113.1 TTT
Chan 78

LOCALIZER 111.9
I-VYIN
Chan 56

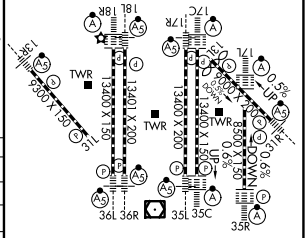
ELEV 607	D	TDZE 607
----------	----------	----------

1100	3000	FUZ R-222	LIKES	ICKEL I-VYIN 19.3
↑	hdg 250°		△	

VGSI and ILS glidepath not coincident (VGSI Angle 3.00/TCH 74).



	1160'	5.5 NM	2.1 NM	6.3 NM	3.2 NM
CATEGORY	A	B	C	D	
S-ILS 18R		CAT II RA 106/12 100 DA 707			
S-ILS 18R		CAT IIIa RVR 07			
S-ILS 18R		CAT IIIb RVR 06			
S-ILS 18R		CAT IIIc NA			



CATEGORY II & III ILS - SPECIAL AIRCREW & AIRCRAFT CERTIFICATION REQUIRED

HIRL all Rwys
REIL Rwys 13L and 31L
TDZL/RCLS all Rwys except 13L and 31L

SC-2, 14 MAY 2026 to 11 JUN 2026

SC-2, 14 MAY 2026 to 11 JUN 2026