

LOC/DME I-VYV 111.9 Chan 56	APP CRS 176°	Rwy Ldg 13400 TDZE 607 Apt Elev 607
--	------------------------	--

ILS RWY 18R (CONVERGING)

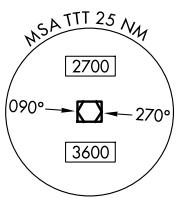
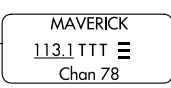
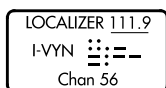
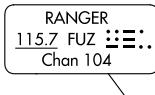
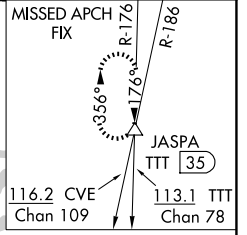
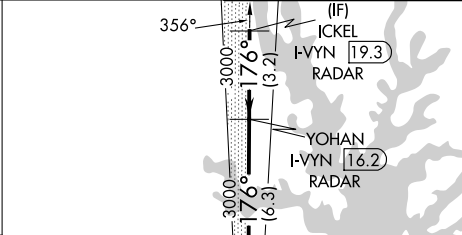
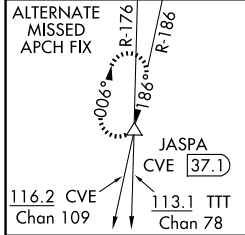
DALLAS-FORT WORTH INTL (DFW)

DME and RADAR required.

ALSF-2 MISSED APPROACH: Climb to 3000 then climb to 4000 on heading 170° and TTT VOR/DME R-176 to JASPA/TTT 35 DME and hold.

Simultaneous approach authorized with CONVERGING ILS RWY 13R, CONVERGING ILS RWY 17C, and CONVERGING ILS 17R.

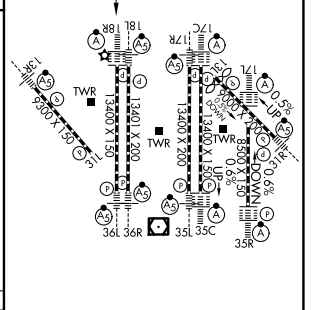
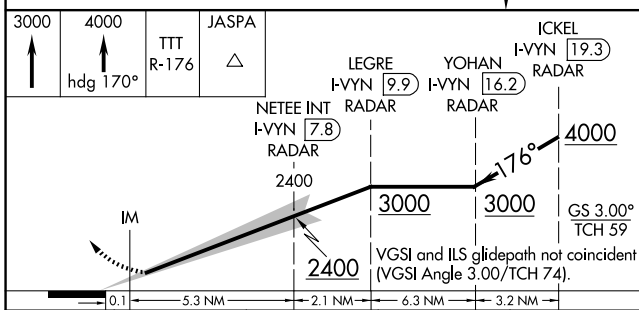
D-ATIS 123.775	LONE STAR APP CON 118.425	DFW TOWER 126.55 127.5 (E) 124.15 134.9 (W)	GND CON 121.65 121.8 (E) 121.85 (W)
--------------------------	-------------------------------------	---	---



SC-2, 14 MAY 2026 to 11 JUN 2026

SC-2, 14 MAY 2026 to 11 JUN 2026

ELEV 607	D	TDZE 607
----------	----------	----------



CATEGORY	A	B	C	D
S-ILS 18R	807/18 200 (200-1/2)			

HIRL all Rwys
REIL Rwy 13L and 31L
TDZL/RCLS all Rwys except 13L and 31L

ILS RWY 18R (CONVERGING)