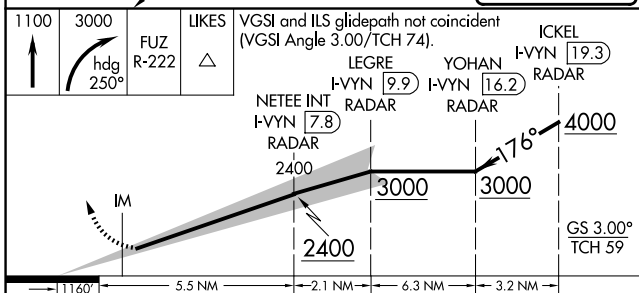
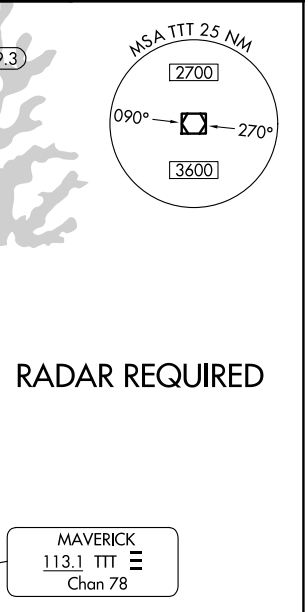
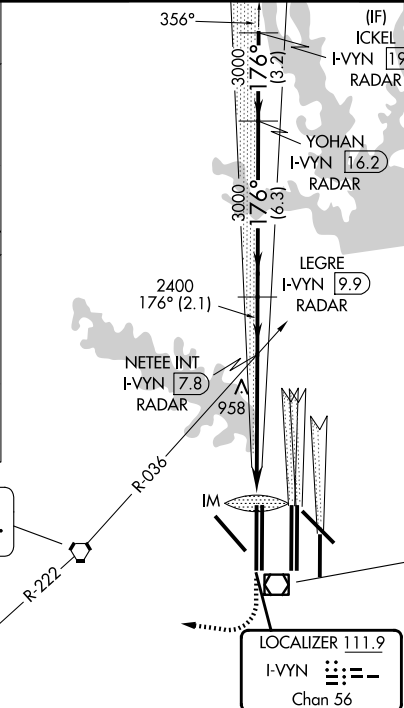
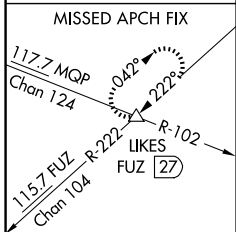
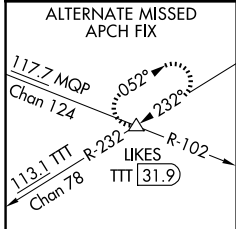


LOC/DME I-VYV 111.9 Chan 56	APP CRS 176°	Rwy Ldg TDZE Apt Elev 13400 607 607
---	------------------------	---

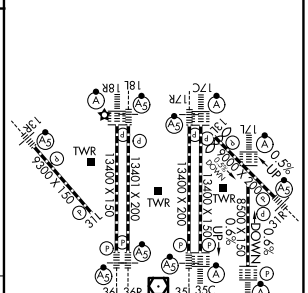
ILS RWY 18R (SA CAT I)

DALLAS-FORT WORTH INTL (DFW)

▽ △	DME or RADAR required. Simultaneous approach authorized with Rwy 17 L/C/R. Requires specific OPSPEC, MSPEC, or LOA approval and use of HUD to DH.	Rwy 18R ALS-F2 (A)	MISSED APPROACH: Climb to 1100 then climbing right turn to 3000 on heading 250° and FUZ VORTAC R-222 to LIKES INT/FUZ VORTAC 27 DME and hold.
D-ATIS 123.775	LONE STAR APP CON 118.425	DFW TOWER 126.55 127.5 (E) 124.15 134.9 (W)	GND CON 121.65 121.8 (E) 121.85 (W)



ELEV 607	D	TDZE 607
----------	----------	----------



CATEGORY	A	B	C	D
S-ILS 18R	RA 158/14		150 DA 757	

SA CATEGORY I ILS - SPECIAL AIRCREW & AIRCRAFT CERTIFICATION REQUIRED

HIRL all Rwys
REIL Rwy 13L and 31L
TDZL/RCLS all Rwy's except 13L and 31L

SC-2, 14 MAY 2026 to 11 JUN 2026

SC-2, 14 MAY 2026 to 11 JUN 2026