

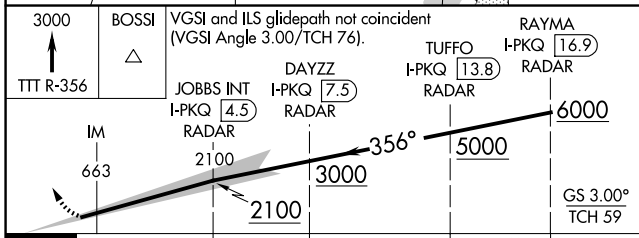
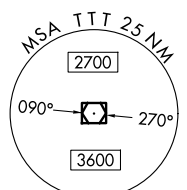
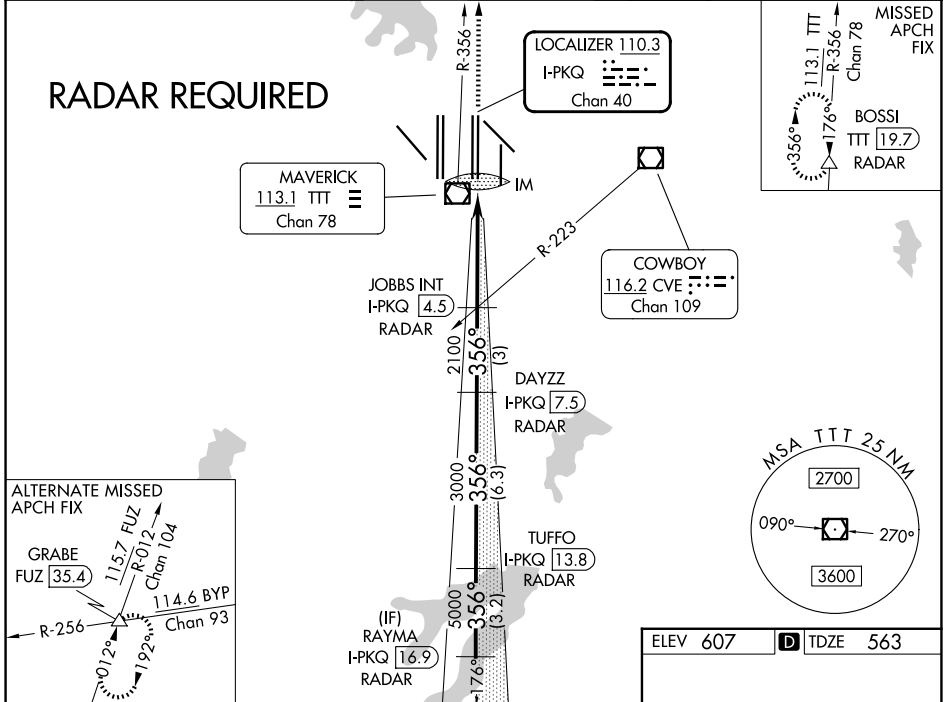
LOC/DME I-PKQ <b>110.3</b> Chan 40	APP CRS <b>356°</b>	Rwy Ldg TDZE Apt Elev	<b>13400</b> <b>563</b> <b>607</b>
------------------------------------------	------------------------	-----------------------------	------------------------------------------

# ILS RWY 35C (CAT II & III)

DALLAS-FORT WORTH INTL (DFW)

DME or RADAR required. Simultaneous approach authorized with Rwy 35R, Rwy 36L/R.	ALSF-2	MISSED APPROACH: Climb to 3000 on TTT VOR/DME R-356 to BOSSI/TTT 19.7 DME/RADAR and hold.
	(A)	

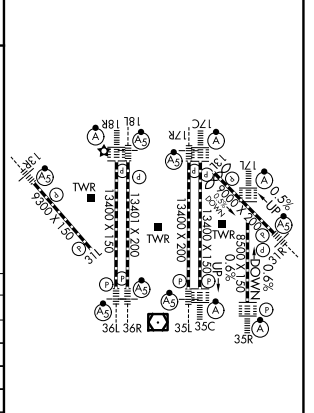
D-ATIS <b>123.775</b>	LONE STAR APP CON <b>127.075</b>	DFW TOWER <b>126.55 127.5 (E)</b> <b>124.15 134.9 (W)</b>	GND CON <b>121.65 121.8 (E)</b> <b>121.85 (W)</b>
--------------------------	-------------------------------------	-----------------------------------------------------------------	---------------------------------------------------------



CATEGORY	A	B	C	D
S-ILS 35C	CAT II RA 100/12 100 DA 663			
S-ILS 35C	CAT IIIa RVR 07			
S-ILS 35C	CAT IIIb RVR 06			
S-ILS 35C	CAT IIIc NA			

## CATEGORY II & III ILS - SPECIAL AIRCREW & AIRCRAFT CERTIFICATION REQUIRED

ELEV 607	<b>D</b> TDZE 563
----------	-------------------



HIRL all Rwys  
 REIL Rwys 13L and 31L  
 TDZL/RCLS all Rwys except 13L and 31L

SC-2, 14 MAY 2026 to 11 JUN 2026

SC-2, 14 MAY 2026 to 11 JUN 2026