

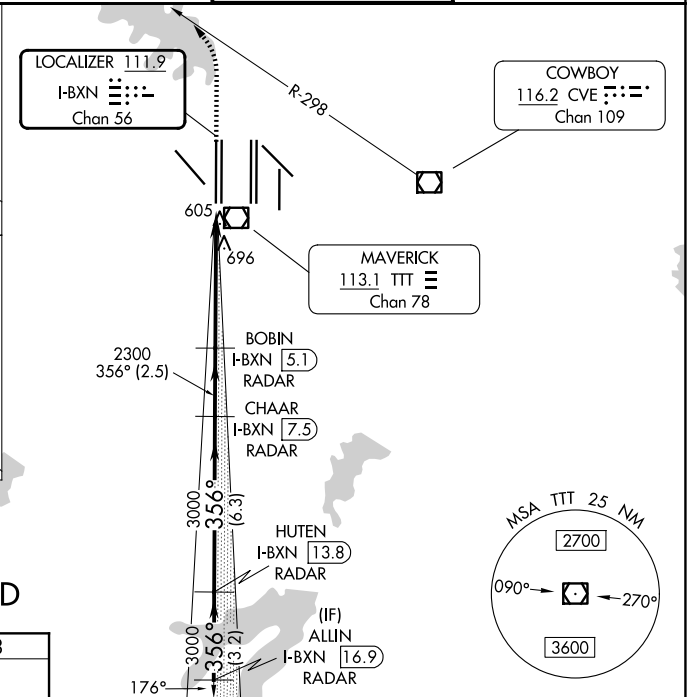
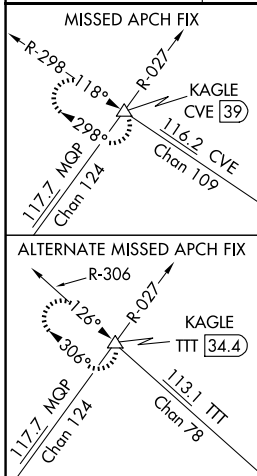
LOC/DME I-BXN 111.9 Chan 56	APP CRS 356°	Rwy Ldg 13400 TDZE 588 Apt Elev 606
---	------------------------	--

ILS RWY 36L (SA CAT II)

DALLAS-FORT WORTH INTL (DFW)

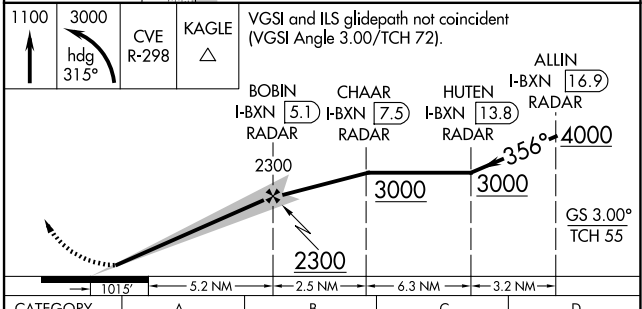
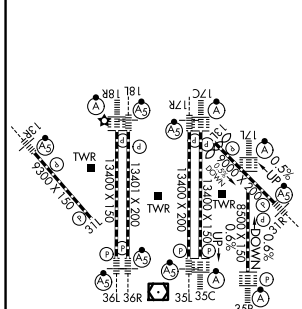
<p>▼ DME or RADAR required. Reduced Lighting: Requires specific OPSPEC, MSPEC, or LOA approval and use of autoland or HUD to touchdown.</p>	MALSR 	MISSED APPROACH: Climb to 1100 then climbing left turn to 3000 on heading 315° and CVE R-298 to KAGLE INT/ CVE VOR/DME 39 DME and hold.

D-ATIS 123.775	LONE STAR APP CON 118.425	DFW TOWER 126.55 127.5 (E) 124.15 134.9 (W)	GND CON 121.65 121.8 (E) 121.85 (W)
--------------------------	-------------------------------------	---	---



RADAR REQUIRED

ELEV 606	D	TDZE 588
----------	---	----------



CATEGORY	A	B	C	D
S-ILS 36L	RA 107/12 100 DA 688			

SA CATEGORY II ILS - SPECIAL AIRCREW & AIRCRAFT CERTIFICATION REQUIRED