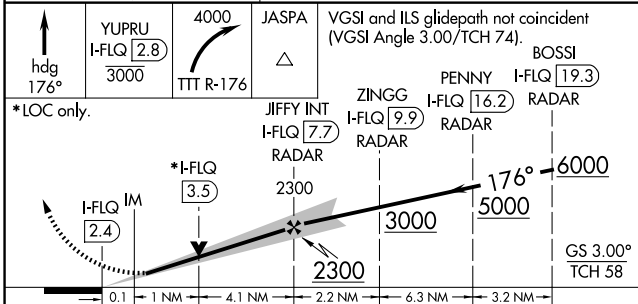
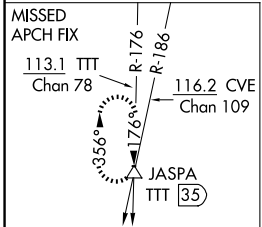
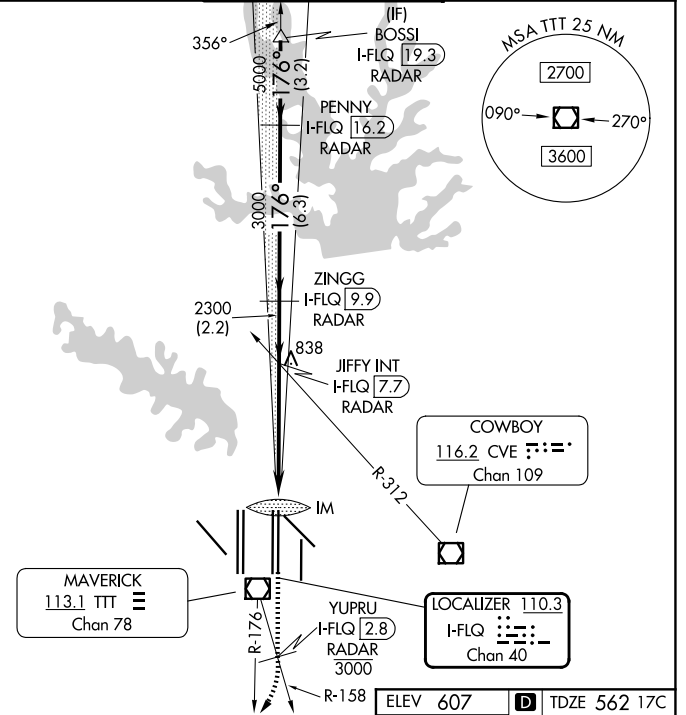
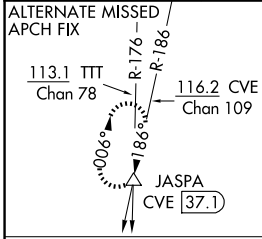


LOC/DME I-FLQ 110.3 Chan 40	APP CRS 176°	Rwy Ldg 17C 17R	17C 17R
		TDZE 562	567
		Apt Elev 607	607

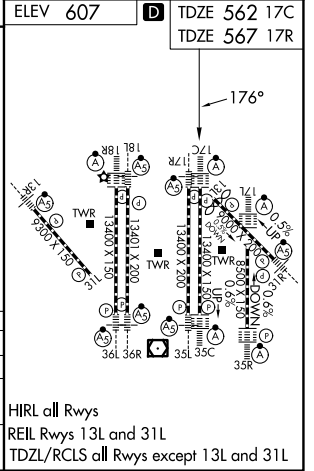
ILS or LOC RWY 17C

DALLAS-FORT WORTH INTL (DFW)

DME and RADAR required.		Rwy 17C ALSF-2	Rwy 17R MALSR	MISSED APPROACH: Climb on heading 176° to cross YUPRU/2.8 DME/RADAR at or below 3000, then climbing right turn to 4000 on TTT VOR/DME R-176 to JASPA/TTT 35 DME and hold.
Simultaneous approach authorized with Rwy 17L, 18L/R. Inop table does not apply to sidestep 17R Cats A and B.		(A)	(A)	
D-ATIS 123.775	LONE STAR APP CON 127.075	DFW TOWER 126.55 127.5 (E) 124.15 134.9 (W)		GND CON 121.65 121.8 (E) 121.85 (W)



CATEGORY	A	B	C	D
S-ILS 17C	762/18		200 (200-1/2)	
S-LOC 17C	1000/24	438 (400-1/2)	1000/40	438 (400-3/4)
SIDESTEP 17R	1140/55 573 (600-1)		1140-1 1/2 573 (600-1 1/2)	



HIRL all Rwys
REIL Rws 13L and 31L
TDZL/RCLS all Rws except 13L and 31L

SC-2, 14 MAY 2026 to 11 JUN 2026

SC-2, 14 MAY 2026 to 11 JUN 2026