

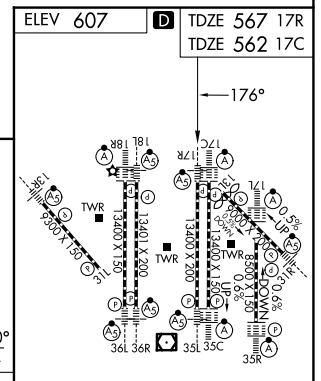
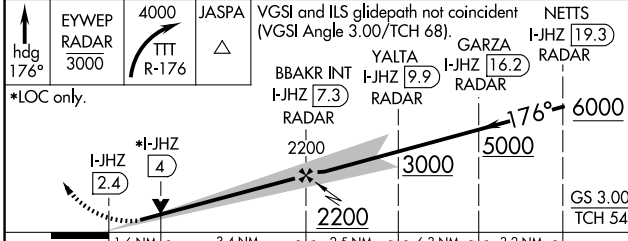
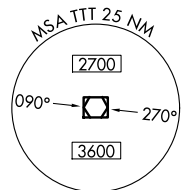
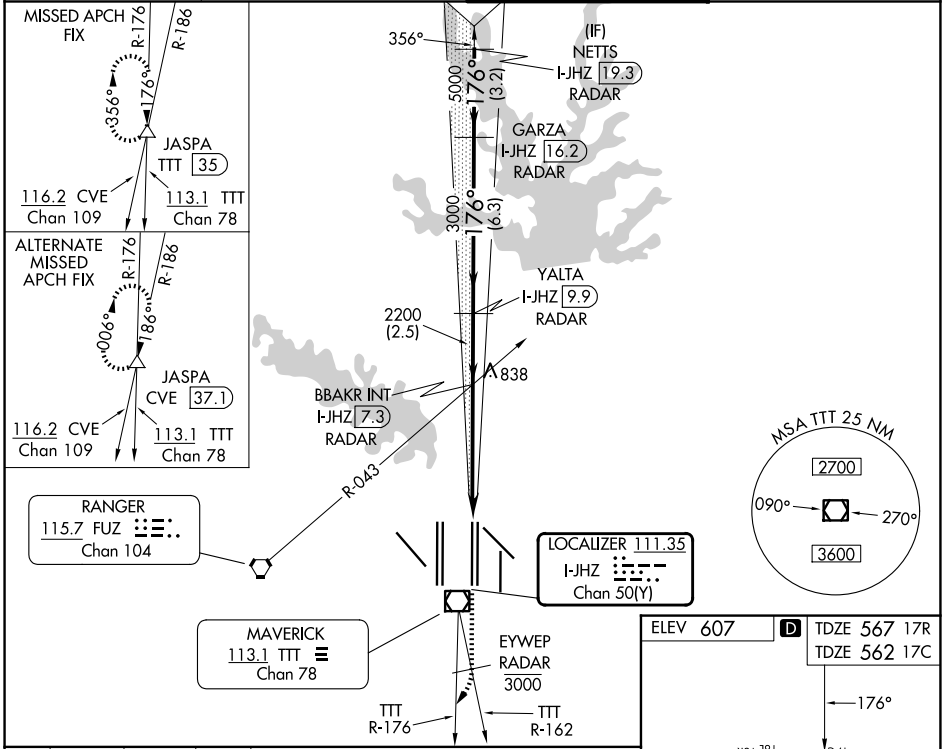
LOC/DME I-JHZ <b>111.35</b> Chan 50(Y)	APP CRS <b>176°</b>	Rwy Ldg 17R <b>13400</b> 17C <b>13400</b> TDZE <b>567</b> <b>562</b> Apt Elev <b>607</b> <b>607</b>
--	------------------------	--

# ILS or LOC RWY 17R

DALLAS-FORT WORTH INTL (DFW)

DME and RADAR required.	Rwy 17R MALSR	Rwy 17C ALSF-2	MISSED APPROACH: Climb on heading 176° to cross EYWEP/RADAR at or below 3000, then climbing right turn to 4000 on TTT VOR/DME R-176 to JASPA/TTT 35 DME and hold.
▼ Simultaneous approach authorized with Rwy 17L, 18L/R.			

D-ATIS <b>123.775</b>	LONE STAR APP CON <b>127.075</b>	DFW TOWER <b>126.55</b> <b>127.5</b> (E) <b>124.15</b> <b>134.9</b> (W)	GND CON <b>121.65</b> <b>121.8</b> (E) <b>121.85</b> (W)
--------------------------	-------------------------------------	---	--



CATEGORY	A	B	C	D
S-ILS 17R	767/18 200 (200-1/2)			
S-LOC 17R	1140/24	573 (600-1/2)	1140-1 1/4	573 (600-1 1/4)
SIDESTEP 17C	1140-1	578 (600-1)	1140-1 1/2	1140-2
			578 (600-1/2)	578 (600-2)

HIRL all Rwys  
REIL Rwy 13L and 31L  
TDZL/RCLS all Rwy except 13L and 31L

SC-2, 14 MAY 2026 to 11 JUN 2026

SC-2, 14 MAY 2026 to 11 JUN 2026