

LOC/DME I-CIX <b>110.55</b> Chan 42 (Y)	APP CRS <b>176°</b>	Rwy Ldg 18L 18R	<b>13401 13400</b>
		TDZE <b>602 606</b>	
		Apt Elev <b>606 606</b>	

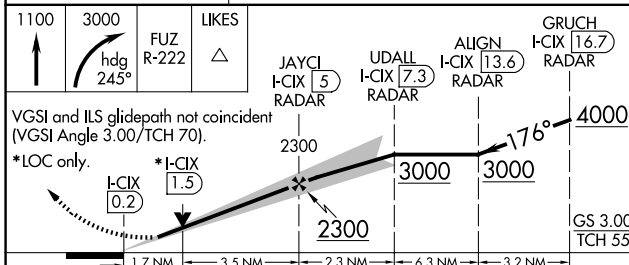
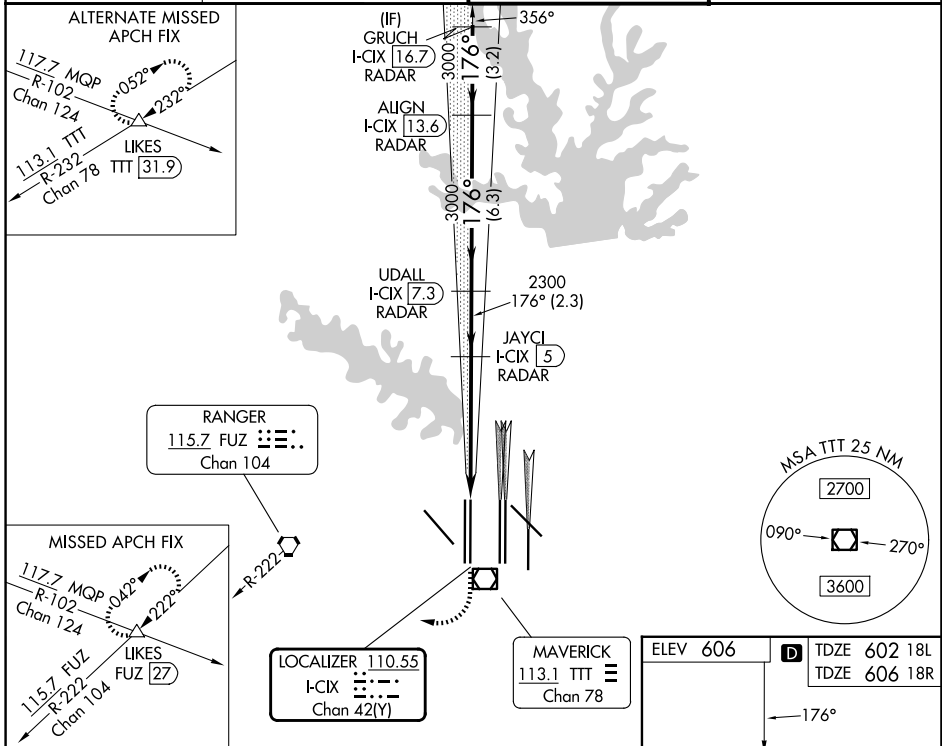
# ILS or LOC RWY 18L

DALLAS-FORT WORTH INTL (DFW)

RADAR required for procedure entry. DME or RADAR required.

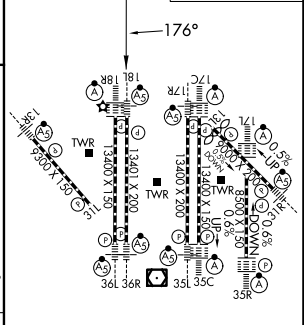
Simultaneous approach authorized with Rwy 17L/C/R. For inop ALS, increase S-LOC 18L Cat C/D and Sidestep 18R Cat C/D visibility to 1 3/4 mile. Inop table does not apply to Sidestep 18R Cats A and B.

D-ATIS <b>123.775</b>	LONE STAR APP CON <b>118.425</b>	DFW TOWER <b>126.55 127.5 (E)</b> <b>124.15 134.9 (W)</b>	GND CON <b>121.65 121.8 (E)</b> <b>121.85 (W)</b>
--------------------------	-------------------------------------	---	---



CATEGORY	A	B	C	D
S-ILS 18L		802/18	200 (200-1/2)	
S-LOC 18L	1220/24	618 (700-1/2)	1220-1 3/8	618 (700-1 3/8)
SIDESTEP 18R	1220/50	614 (700-1)	1220-1 3/8	1220-1 1/2
			614 (700-1 3/8)	614 (700-1 1/2)

ELEV 606	TDZE 602 18L
	TDZE 606 18R



HIRL all Rwys	
REIL Rwys 13L and 31L	
TDZL/RCLS all Rwys except 13L and 31L	
FAF to MAP 5.2 NM	
Knots	60 90 120 150 180
Min:Sec	5:12 3:28 2:36 2:05 1:44

SC-2, 14 MAY 2026 to 11 JUN 2026

SC-2, 14 MAY 2026 to 11 JUN 2026