

| | | |
|---|------------------------|---|
| LOC/DME I-RRA 110.9 Chan 46 | APP CRS 311° | Rwy Ldg 8373 TDZE 523 Apt Elev 607 |
|---|------------------------|---|

ILS or LOC RWY 31R

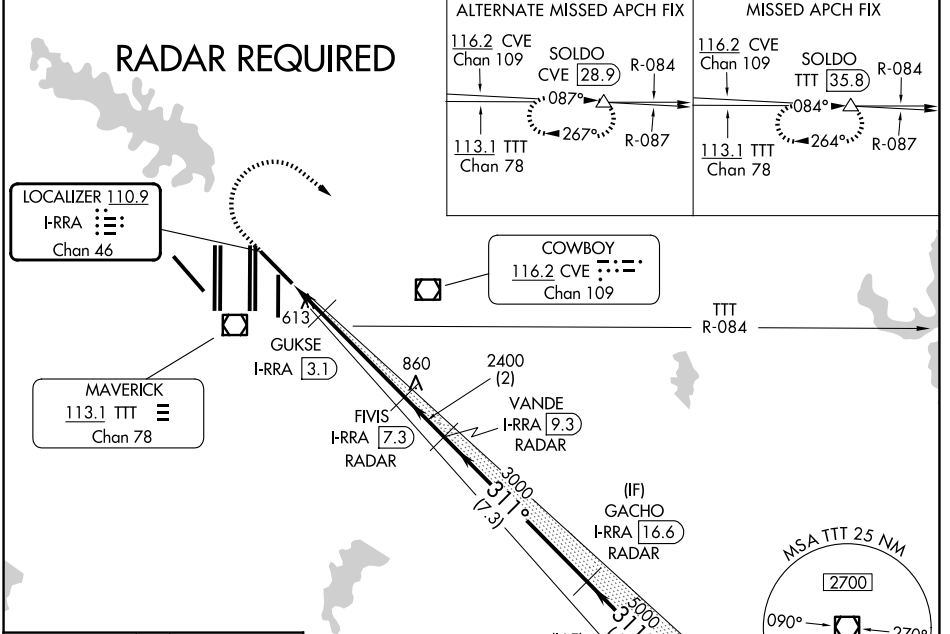
DALLAS-FORT WORTH INTL (DFW)

Simultaneous approach authorized. DME required.
For inop ALS increase S-LOC 31R GUKSE FIX minimums
Cat C/D visibility to RVR 5500.

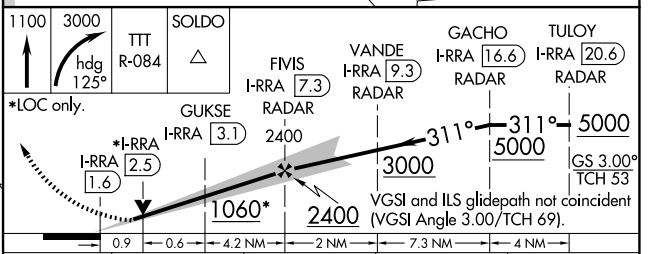
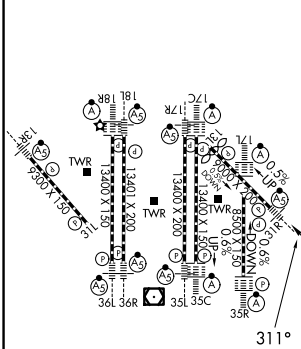


MISSED APPROACH: Climb to 1100 then climbing
right turn to 3000 on heading 125° and TTT VOR/
DME R-084 to SOLD0/TTT 35.8 DME and hold.

| | | | |
|--------------------------|---|---|---|
| D-ATIS 123.775 | LONE STAR APP CON 135.5 125.2 | DFW TOWER 126.55 127.5 (E) 124.15 134.9 (W) | GND CON 121.65 121.8 (E) 121.85 (W) |
|--------------------------|---|---|---|



| | | |
|----------|----------|----------|
| ELEV 607 | D | TDZE 523 |
|----------|----------|----------|



| CATEGORY | A | B | C | D |
|--------------------|---------|-------------|-------------|--------------|
| S-ILS 31R | 723/18 | | 200 (200-½) | |
| S-LOC 31R | 1060/24 | 537 (500-½) | 1060/55 | 537 (500-1¼) |
| GUKSE FIX MINIMUMS | | | | |
| S-LOC 31R | 880/24 | 357 (300-½) | 880/30 | 357 (300-¾) |

SC-2, 14 MAY 2026 to 11 JUN 2026

SC-2, 14 MAY 2026 to 11 JUN 2026