

LOC/DME I-PKQ <b>110.3</b> Chan 40	APP CRS <b>356°</b>	Rwy Ldg 35C 35L 13400 13400	TDZE 563 564	Apt Elev 607 607
--	------------------------	-----------------------------------	-----------------	---------------------

# ILS or LOC RWY 35C

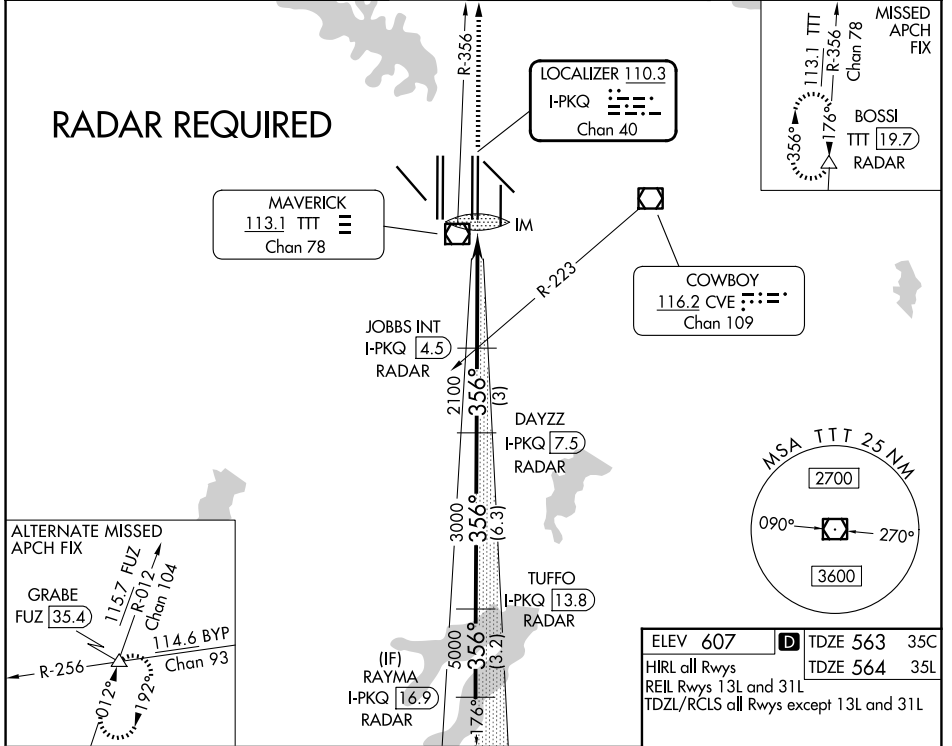
## DALLAS-FORT WORTH INTL (DFW)

**▼** Inoperative table does not apply to Sidestep Rwy 35L Cats A and B. DME or RADAR required. Simultaneous approach authorized with Rwy 35R, Rwy 36L/R.



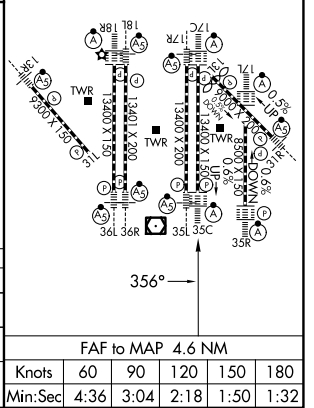
MISSED APPROACH: Climb to 3000 on TTT VOR/DME R-356 to BOSSI/TTT 19.7 DME/RADAR and hold.

D-ATIS <b>123.775</b>	LONE STAR APP CON <b>127.075</b>	DFW TOWER <b>126.55 127.5 (E)</b> <b>124.15 134.9 (W)</b>	GND CON <b>121.65 121.8 (E)</b> <b>121.85 (W)</b>
--------------------------	-------------------------------------	---	---



3000 ↑ TTT R-356	BOSSI △	VGSI and ILS glideslope not coincident (VGSI Angle 3.00/TCH 76).		RAYMA I-PKQ 16.9 RADAR
*LOC only	JOBBES INT I-PKQ 4.5 RADAR	DAYZZ I-PKQ 7.5 RADAR	TUFFO I-PKQ 13.8 RADAR	6000
IM	2100	3000	5000	GS 3.00° TCH 59
0.1 NM	3.5 NM	3 NM	6.3 NM	3.2 NM
CATEGORY	A	B	C	D
S-ILS 35C	763/18		200 (200-½)	
S-LOC 35C	1000/24	437 (400-½)	1000/40	437 (400-¾)
SIDESTEP 35L	1000/55		436 (400-1)	
			1000-1½	436 (400-1½)

ELEV 607	<b>D</b> TDZE 563 35C
HIRL all Rwys	TDZE 564 35L
REIL Rwys 13L and 31L	
TDZL/RCLS all Rwys except 13L and 31L	



FAF to MAP 4.6 NM					
Knots	60	90	120	150	180
Min:Sec	4:36	3:04	2:18	1:50	1:32

SC-2, 14 MAY 2026 to 11 JUN 2026

SC-2, 14 MAY 2026 to 11 JUN 2026