

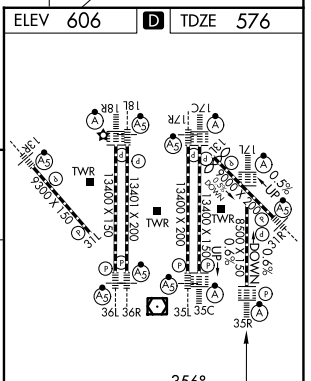
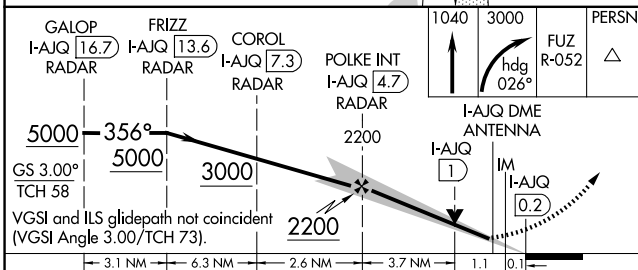
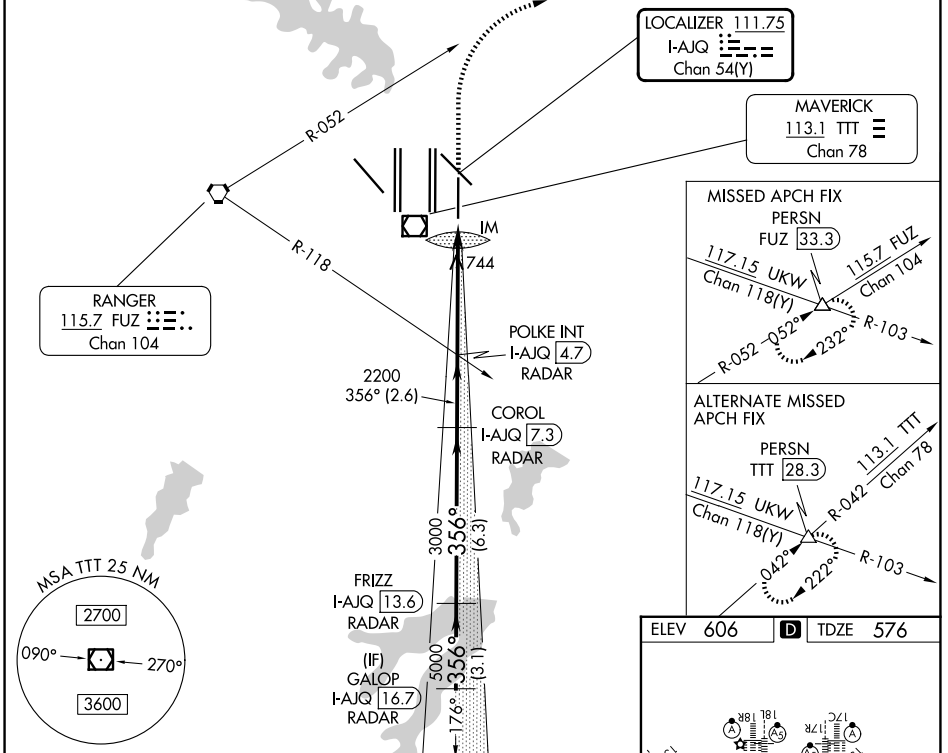
LOC/DME I-AJQ 111.75 Chan 54(Y)	APP CRS 356°	Rwy Ldg 8500 TDZE 576 Apt Elev 606
---	------------------------	---

ILS or LOC RWY 35R

DALLAS-FORT WORTH INTL (DFW)

DME or RADAR required.	ALSF-2 	MISSED APPROACH: Climb to 1040 then climbing right turn to 3000 on heading 026° and on FUZ VORTAC R-052 to PERSN/FUZ 33.3 DME and hold.
Simultaneous approach authorized. For inop ALS, increase S-LOC 35R Cat C/D visibility to 1 3/8 SM.		

D-ATIS 123.775	LONE STAR APP CON 119.4	DFW TOWER 126.55 127.5 (E) 124.15 134.9 (W)	GND CON 121.65 121.8 (E) 121.85 (W)
--------------------------	-----------------------------------	---	---



CATEGORY	A	B	C	D
S-ILS 35R	776/18 200 (200-1/2)			
S-LOC 35R	1040/24	464 (500-1/2)	1040/50	464 (500-1)

HIRL all rwys
REIL Rwy 13L and 31L
TDZL/RCLS all rwys except 13L, and 31L
FAF to MAP 4.9 NM

Knots	60	90	120	150	180
Min:Sec	4:54	3:16	2:27	1:58	1:38

SC-2, 14 MAY 2026 to 11 JUN 2026

SC-2, 14 MAY 2026 to 11 JUN 2026