

LOC/DME I-LWN 109.5 Chan 32	APP CRS 135°	Rwy Ldg 9300 TDZE 591 Apt Elev 606
-------------------------------------------------	------------------------	---------------------------------------------------------------

ILS V RWY 13R (CONVERGING)

DALLAS-FORT WORTH INTL (DFW)

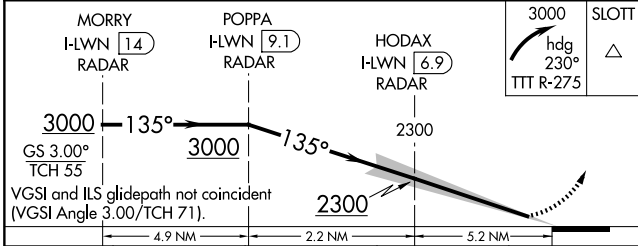
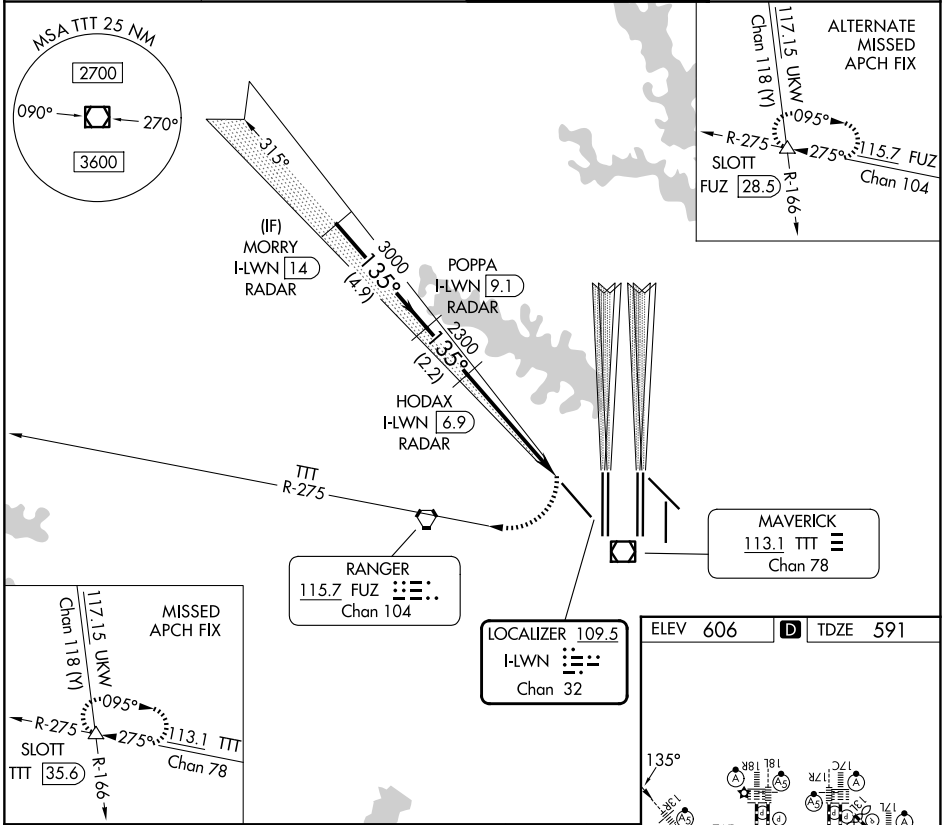
RADAR required for procedure entry.

⚠ Simultaneous converging approach authorized with Converging ILS Rwy 18L/R and Converging ILS Rwy 17C/R. For inop ALS, increase S-ILS 13R all Cats visibility to 2¼.

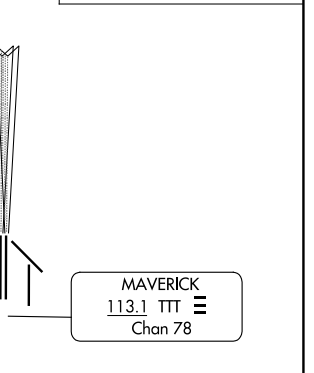
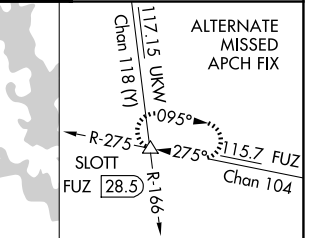
MALSR

⚠ MISSED APPROACH: Climbing right turn to 3000 on heading 230° and TTT VOR/DME R-275 to SLOTT/TTT 35.6 DME and hold.

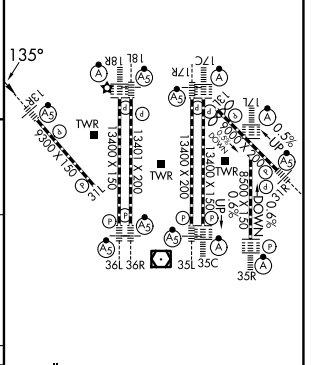
D-ATIS 123.775	LONE STAR APP CON 133.15 118.1	DFW TOWER 126.55 127.5 (E) 124.15 134.9 (W)	GND CON 121.65 121.8 (E) 121.85 (W)
--------------------------	------------------------------------------	-----------------------------------------------------------------	---------------------------------------------------------



CATEGORY	A	B	C	D
S-ILS 13R	1401-2½	810 (800-2½)	1441-2½ 850 (900-2½)	NA



ELEV 606	D TDZE 591
----------	------------



HIRL all Rwsys
REIL Rwsys 13L and 31L
TDZL/RCLS all Rwsys except 13L and 31L

SC-2, 14 MAY 2026 to 11 JUN 2026

SC-2, 14 MAY 2026 to 11 JUN 2026