

KEENE SIX DEPARTURE

LONE STAR DEP CON

135.975 379.9 (Rwys 13L/R, 17L/C/R, 18L/R)

118.1 306.95 (Rwys 31L/R, 35L/C/R, 36L/R)

D-ATIS DEP

135.925

CLNC DEL

128.25

CPDLC

GND CON

121.65 121.8 (EAST)

121.85 (WEST)

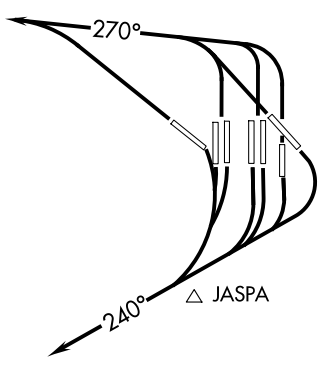
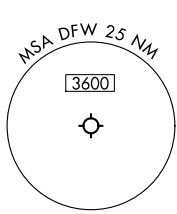
DFW TOWER

126.55 127.5 (EAST)

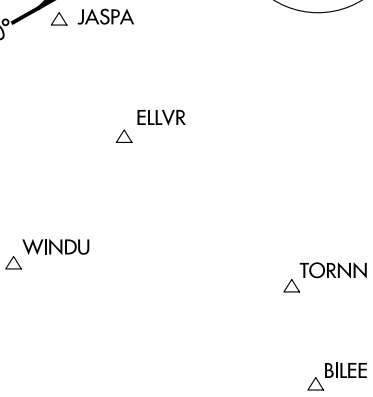
124.15 134.9 (WEST)

RADAR required.

**TOP ALTITUDE:
2000**



WACO
115.3 ACT Chan 100



NOTE: For non-Turbojet aircraft.
NOTE: JASPA TRANSITION: ATC assigned.

COLLEGE STATION
113.3 CLL Chan 80

NAVASOTA
115.9 TNV Chan 106

TAKEOFF MINIMUMS

Rwys 13L/R, 17L/C/R, 18L/R, 31L/R, 35L/C, 36L/R: Standard.

Rwy 35R: 300-1³/₄ or standard with minimum climb of 230'/NM to 800, or alternatively, with standard takeoff minimums and a normal 200'/NM climb gradient, takeoff must occur no later than 1700' prior to DER.

NOTE: Chart not to scale.



DEPARTURE ROUTE DESCRIPTION

NON-TURBOJET AIRCRAFT ONLY

TAKEOFF RUNWAYS 13L/R, 17L/C/R, 18L/R: Climb on heading 240° for RADAR vectors to appropriate FIX, maintain 2000 and expect filed altitude 10 minutes after departure.

TAKEOFF RUNWAYS 31L/R, 35L/C/R, 36L/R: Climb on heading 270° for RADAR vectors to appropriate FIX, maintain 2000 and expect filed altitude 10 minutes after departure.

KEENE SIX DEPARTURE

(KEENE6.DFW) 12JUN25

DALLAS-FORT WORTH, TEXAS
DALLAS-FORT WORTH INTL (DFW)

SC-2, 14 MAY 2026 to 11 JUN 2026

SC-2, 14 MAY 2026 to 11 JUN 2026