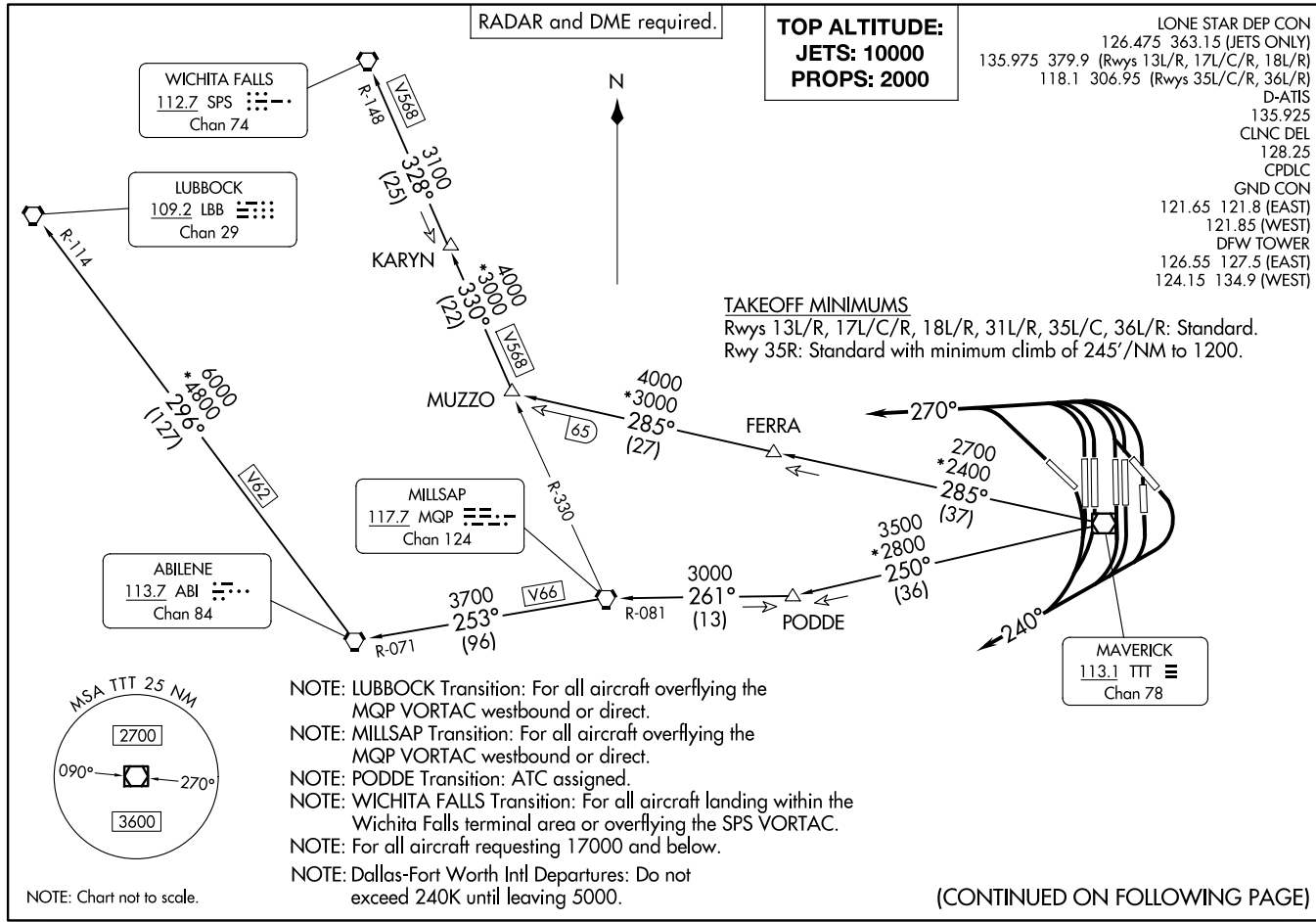


KINGDOM FIVE DEPARTURE  
(KING5.TTT) 17AR25

DALLAS-FORT WORTH, TEXAS  
DALLAS-FORT WORTH INTL (DFW)



(KING5.TTT) 25107  
KINGDOM FIVE DEPARTURE

AL-6039 (FAA)  
DALLAS-FORT WORTH INTL (DFW)  
DALLAS-FORT WORTH, TEXAS

(CONTINUED ON FOLLOWING PAGE)

# KINGDOM FIVE DEPARTURE



## DEPARTURE ROUTE DESCRIPTION

### JETS

TAKEOFF RUNWAYS 13L/R, 17L/C/R, 18L/R, 31L/R, 35L/C/R, 36L/R: Climb on assigned heading for RADAR vectors to appropriate route, thence. . .

. . .maintain 10000 and expect filed altitude 10 minutes after departure.

### PROPS

TAKEOFF RUNWAYS 13L/R, 17L/C/R, 18L/R: Climb on heading 240° then on assigned heading for RADAR vectors to appropriate route, thence. . .

TAKEOFF RUNWAYS 31L/R, 35L/C/R, 36L/R: Climb on heading 270° then on assigned heading for RADAR vectors to appropriate route, thence. . .

. . .maintain 2000 and expect filed altitude 10 minutes after departure.

LUBBOCK TRANSITION (KING5.LBB): From over TTT VOR/DME on TTT R-250 to PODDE, then on MQP R-081 to MQP VORTAC, then on MQP R-253 and ABI R-071 to ABI VORTAC, then on ABI R-296 and LBB R-114 to LBB VORTAC.

MILLSAP TRANSITION (KING5.MQP): From over TTT VOR/DME on TTT R-250 to PODDE, then on MQP R-081 to MQP VORTAC.

PODDE TRANSITION (KING5.PODDE): From over TTT VOR/DME on TTT R-250 to PODDE.

WICHITA FALLS TRANSITION (KING5.SPS): From over TTT VOR/DME on TTT R-285 to MUZZO, then on MQP R-330 and SPS R-148 to KARYN, then on SPS R-148 to SPS VORTAC.

SC-2, 14 MAY 2026 to 11 JUN 2026

SC-2, 14 MAY 2026 to 11 JUN 2026