

# LOWGN EIGHT DEPARTURE (RNAV)

DALLAS-FORT WORTH, TEXAS

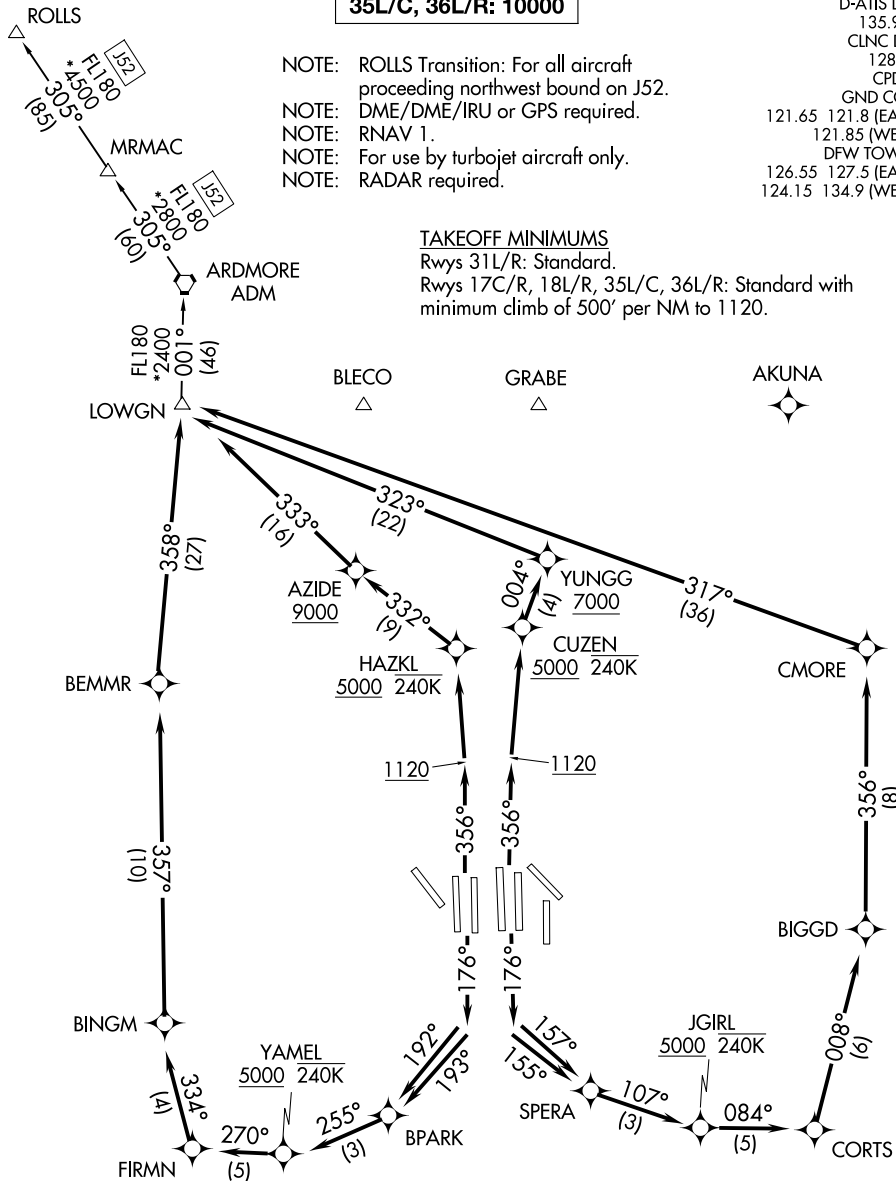
**TOP ALTITUDE:**  
**RWYS 31L/R: 5000**  
**RWYS 17C/R, 18L/R, 35L/C, 36L/R: 10000**

LONE STAR DEP CON  
 118.55 290.35 (Rwys 17R/C)  
 126.47 363.15 (Rwys 18L/R)  
 125.12 353.95 (Rwys 35L/C and 36L/R)  
 D-ATIS DEP  
 135.925  
 CLNC DEL  
 128.25  
 CPDLC  
 GND CON  
 121.65 121.8 (EAST)  
 121.85 (WEST)  
 DFW TOWER  
 126.55 127.5 (EAST)  
 124.15 134.9 (WEST)

- NOTE: ROLLS Transition: For all aircraft proceeding northwest bound on J52.  
 NOTE: DME/DME/IRU or GPS required.  
 NOTE: RNAV 1.  
 NOTE: For use by turbojet aircraft only.  
 NOTE: RADAR required.

### TAKEOFF MINIMUMS

Rwys 31L/R: Standard.  
 Rwys 17C/R, 18L/R, 35L/C, 36L/R: Standard with minimum climb of 500' per NM to 1120.



NOTE: Chart not to scale.

(CONTINUED ON FOLLOWING PAGE)

# LOWGN EIGHT DEPARTURE (RNAV)

(LOWGN8.LOWGN) 29MAR18

DALLAS-FORT WORTH, TEXAS  
DALLAS-FORT WORTH INTL (DFW)

SC-2, 14 MAY 2026 to 11 JUN 2026

SC-2, 14 MAY 2026 to 11 JUN 2026

LOWGN EIGHT DEPARTURE (RNAV)



DEPARTURE ROUTE DESCRIPTION

TAKEOFF RWY 17C: Climb heading 176° to intercept course 157° to SPERA, then on track 107° to cross JGIRL at or above 5000 and at or below 240K, then on depicted route to LOWGN, thence. . . .

TAKEOFF RWY 17R: Climb heading 176° to intercept course 155° to SPERA, then on track 107° to cross JGIRL at or above 5000 and at or below 240K, then on depicted route to LOWGN, thence. . . .

TAKEOFF RWY 18L: Climb heading 176° to intercept course 193° to BPARK, then on track 255° to cross YAMEL at or above 5000 and at or below 240K, then on depicted route to LOWGN, thence. . . .

TAKEOFF RWY 18R: Climb heading 176° to intercept course 192° to BPARK, then on track 255° to cross YAMEL at or above 5000 and at or below 240K, then on depicted route to LOWGN, thence. . . .

TAKEOFF RWYS 35C/L: Climb heading 356° to 1120, then direct CUZEN, cross CUZEN at or above 5000 and at or below 240K, then on track 004° to cross YUNGG at or above 7000, then on depicted route to LOWGN, thence. . . .

TAKEOFF RWYS 36L/R: Climb heading 356° to 1120, then direct HAZKL, cross HAZKL at or above 5000 and at or below 240K, then on track 332° to cross AZIDE at or above 9000, then on depicted route to LOWGN, thence. . . .

. . . .on (transition) maintain 10000. Expect filed altitude ten minutes after departure.

TAKEOFF RWYS 31L/R: Climb heading assigned by ATC, expect RADAR vectors to LOWGN, thence. . . .

. . . .on (transition) maintain 5000. Expect filed altitude ten minutes after departure.

ARDMORE TRANSITION (LOWGN8.ADM)

ROLLS TRANSITION (LOWGN8.ROLLS)

SC-2, 14 MAY 2026 to 11 JUN 2026

SC-2, 14 MAY 2026 to 11 JUN 2026