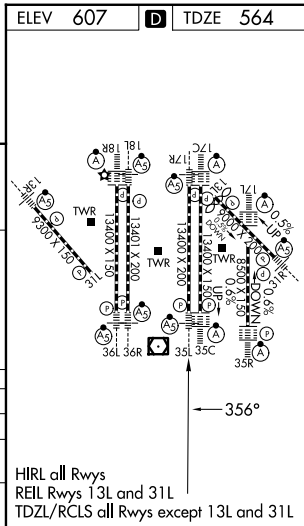
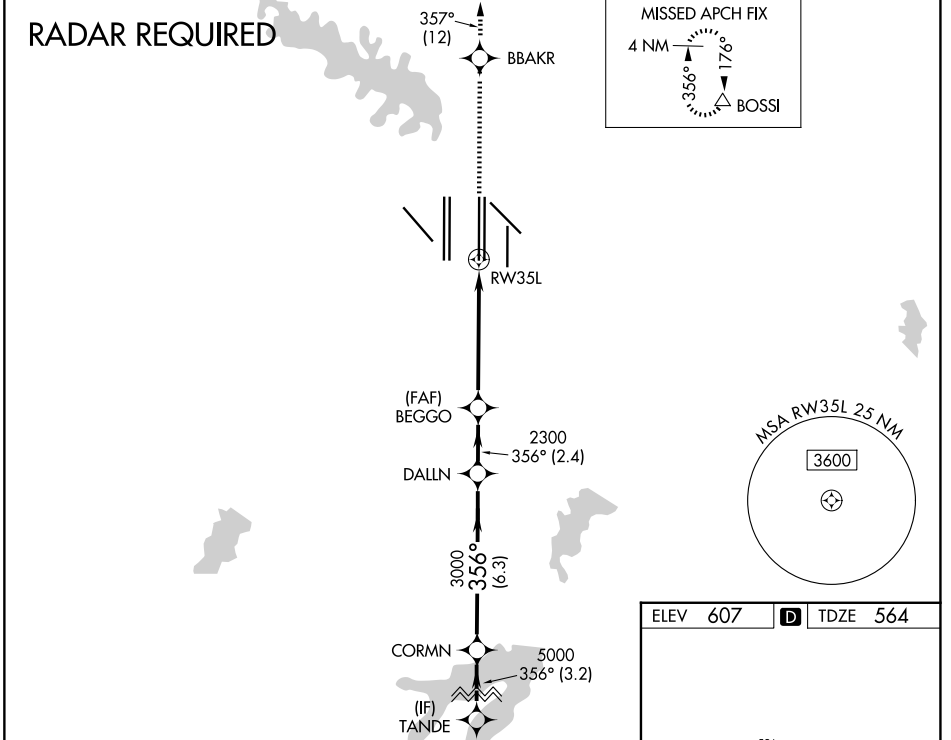


WAAS CH <b>45805</b> <b>W35B</b>	APP CRS <b>356°</b>	Rwy Ldg <b>13400</b> TDZE <b>564</b> Apt Elev <b>607</b>
--	------------------------	--

# RNAV (GPS) RWY 35L

DALLAS-FORT WORTH INTL (DFW)

<p>▼ For uncompensated Baro-VNAV systems, LNAV/VNAV NA below -4°C (25°F) or above 54°C (130°F). Simultaneous approach authorized with Rwy 36L/R and Rwy 35R. DME/DME RNP-0.3 NA. LNAV procedure NA during simultaneous operations. Use of FD or AP providing RNAV track guidance required during simultaneous operations.</p>	<p>MALSRL</p>	<p>MISSED APPROACH: Climb to 3000 direct BBAKR and on track 357° to BOSSI and hold.</p>	
		D-ATIS <b>123.775</b>	LONE STAR APP CON <b>127.075</b>



VGSI and RNAV glidepath not coincident (VGSI Angle 3.00/TCH 63).

TANDÉ	CORMN	DALLN	BEGGO	RWY 35L
6000	5000	3000	2300	
GP 3.00° TCH 47				
3.2 NM	6.3 NM	2.4 NM	4.1 NM	1.2 NM
*RNAV only.				
TANDÉ		BBAKR		BOSSI
3000		tr 357°		
*1.2 NM to RWY 35L				

CATEGORY	A	B	C	D
LPV DA	764/18 200 (200-½)			
LNAV/VNAV DA	928/40 364 (400-¾)			
LNAV MDA	1020/24 456 (500-½)	1020/45 456 (500-¾)		

SC-2, 14 MAY 2026 to 11 JUN 2026

SC-2, 14 MAY 2026 to 11 JUN 2026