

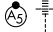
# RNAV (RNP) Z RWY 13R

DALLAS-FORT WORTH INTL (DFW)

APP CRS	Rwy Ldg	<b>9300</b>
<b>135°</b>	TDZE	<b>591</b>
	Apt Elev	<b>606</b>

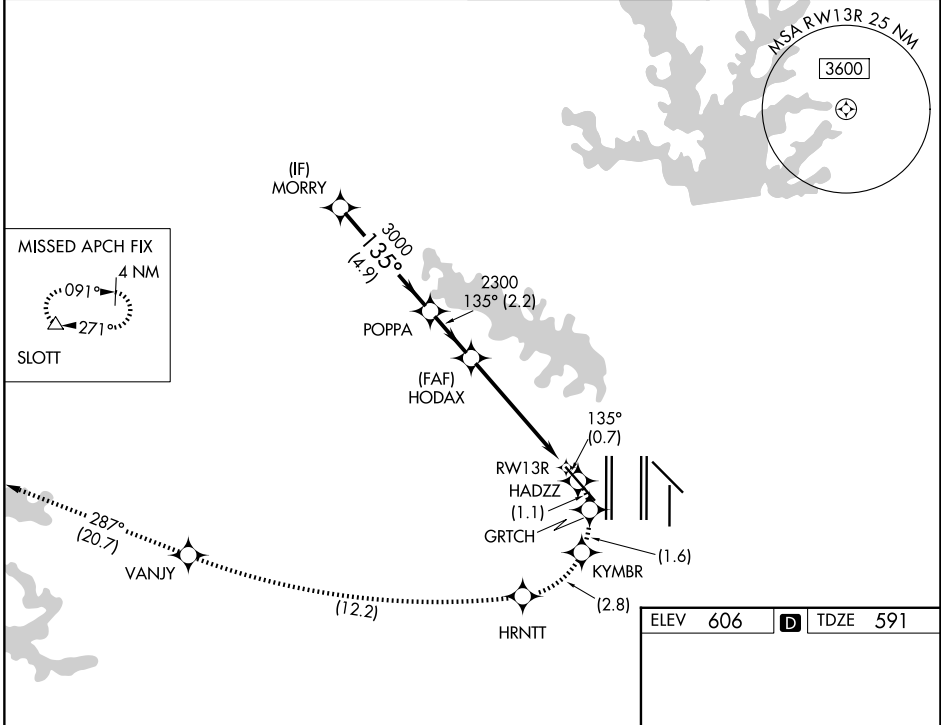
RNP AR APCH. RF required.

**▼** For uncompensated Baro-VNAV systems, procedure NA below -6°C or above 54°C. Missed approach requires RNP less than 1.0.

MALSR 

MISSED APPROACH: (Do not exceed 185K until HRNTT) Climb to 3000 on the RNAV missed approach route to SLOTT and hold.

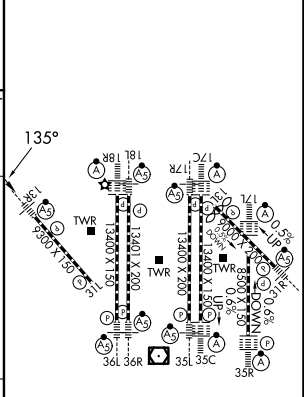
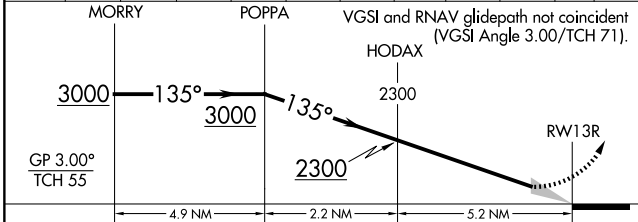
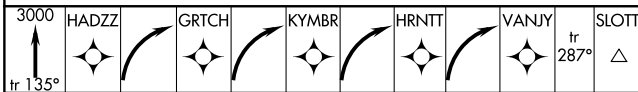
D-ATIS <b>123.775</b>	LONE STAR APP CON <b>133.15 118.1</b>	DFW TOWER <b>126.55 127.5 (E)</b> <b>124.15 134.9 (W)</b>	GND CON <b>121.65 121.8 (E)</b> <b>121.85 (W)</b>
--------------------------	--	---	---



SC-2, 14 MAY 2026 to 11 JUN 2026

SC-2, 14 MAY 2026 to 11 JUN 2026

ELEV	606	<b>D</b>	TDZE	591
------	-----	----------	------	-----



CATEGORY	A	B	C	D
RNP 0.30 DA		1041/45	450 (500-7%)	

## AUTHORIZATION REQUIRED

HIRL all Rwys  
REIL Rwy 13L and 31L  
TDZL/RCLS all Rwy's except 13L and 31L