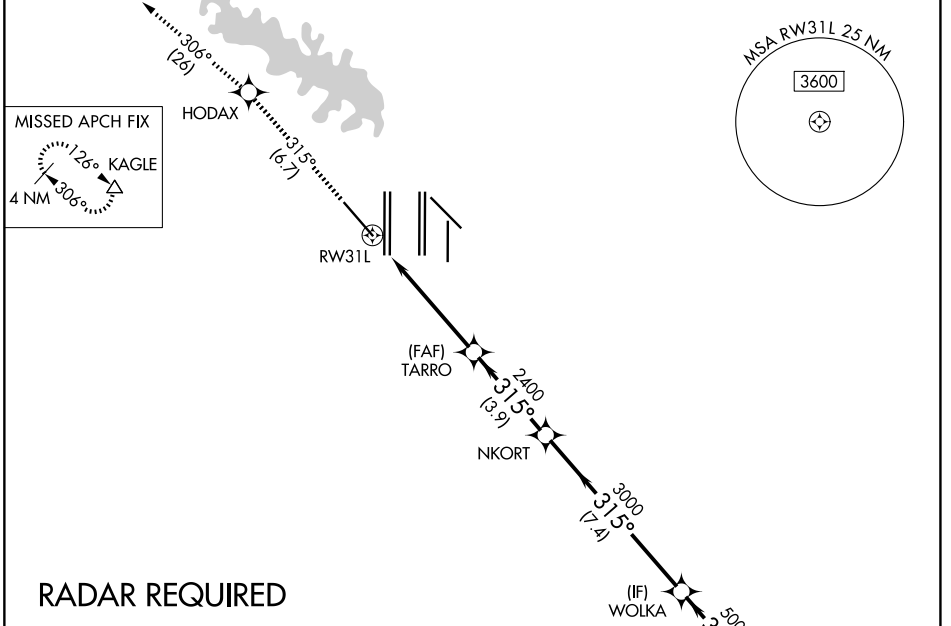


APP CRS 315°	Rwy Ldg 9300 TDZE 581 Apt Elev 607
------------------------	---

RNAV (RNP) Z RWY 31L

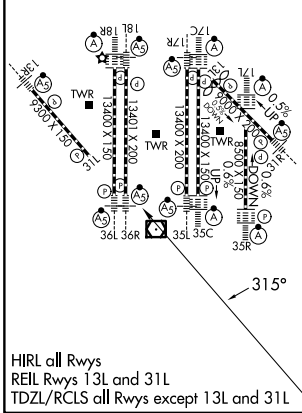
DALLAS-FORT WORTH INTL (DFW)

<p>▼ For uncompensated Baro-VNAV systems, procedure NA below -4°C (25°F) or above 54°C (130°F). Simultaneous approach authorized with Rwy 31R. GPS Required. Use of FD or AP providing RNAV track guidance required during simultaneous operations.</p>		<p>MISSED APPROACH: Climb to 3000 on track 315° to HODAX and on track 306° to KAGLE and hold.</p>	
D-ATIS 123.775	LONE STAR APP CON 118.425 127.075 119.4	DFW TOWER 126.55 127.5 (E) 124.15 134.9 (W)	GND CON 121.65 121.8 (E) 121.85 (W)

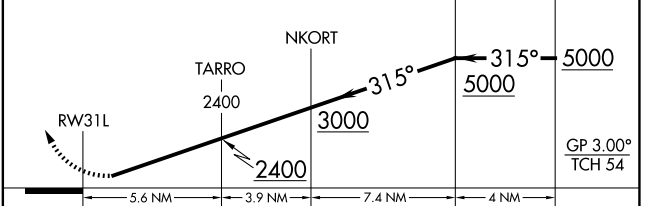


RADAR REQUIRED

ELEV 607	D	TDZE 581
-----------------	----------	-----------------



3000 HODAX	KAGLE	VGSI and RNAV glidepath not coincident (VGSI Angle 3.13/TCH 72).
fr 315°	tr 306°	



CATEGORY	A	B	C	D
RNP 0.30 DA	951/60 370 (400-1¼)			

SC-2, 14 MAY 2026 to 11 JUN 2026

SC-2, 14 MAY 2026 to 11 JUN 2026