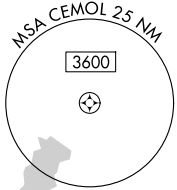
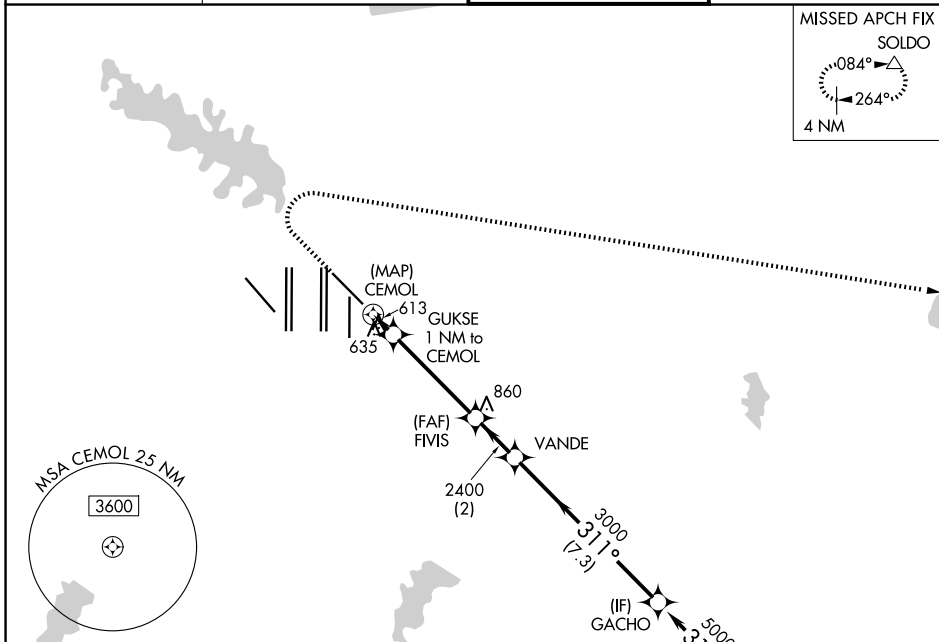
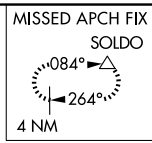


WAAS CH 90342 W31B	APP CRS 311°	Rwy Ldg 8373 TDZE 523 Apt Elev 607
--	------------------------	---

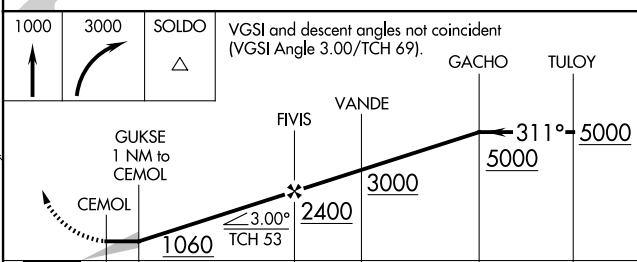
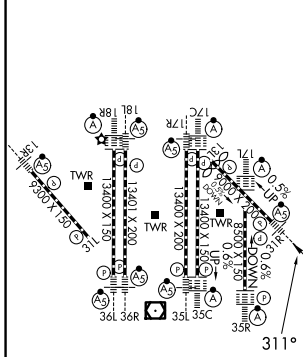
RNAV (GPS) Y RWY 31R

DALLAS-FORT WORTH INTL (DFW)

RNP APCH. ▼ For inop ALS, increase LP Cat C/D visibility to RVR 5500 and LNAV Cat C/D visibility to RVR 6000.		MALSR 	MISSED APPROACH: Climb to 1000 then climbing right turn to 3000 direct SOLDO and hold.	
D-ATIS 123.775	LONE STAR APP CON 135.5 125.2	DFW TOWER 126.55 127.5 (E) 124.15 134.9 (W)		GND CON 121.65 121.8 (E) 121.85 (W)



ELEV 607	D	TDZE 523
----------	----------	----------



CATEGORY	A	B	C	D
LP MDA	880/24 357 (300-½)		880/30 357 (300-¾)	
LNAV MDA	940/24 417 (400-½)		940/40 417 (400-¾)	

SC-2, 14 MAY 2026 to 11 JUN 2026

SC-2, 14 MAY 2026 to 11 JUN 2026