

LONE STAR DEP CON  
 118.55 290.35  
 D-ATIS DEP  
 135.925  
 CLNC DEL  
 128.25  
 CPDLC  
 GND CON  
 121.65 121.8 (EAST)  
 121.85 (WEST)  
 DFW TOWER  
 126.55 127.5 (EAST)  
 124.15 134.9 (WEST)

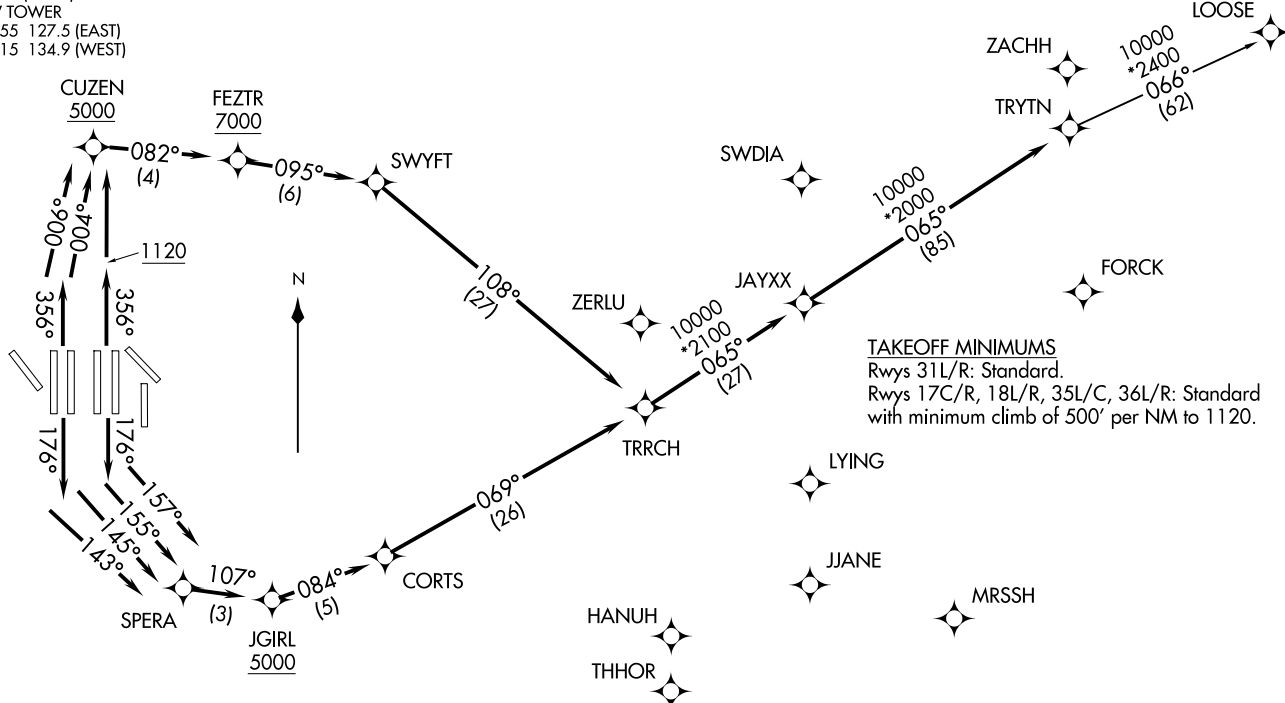
RNAV 1 - DME/DME/IRU or GPS.  
 RADAR required.

**TOP ALTITUDE:**  
**RWYS 31L/R: 5000**  
**RWYS 17C/R, 18L/R,**  
**35L/C, 36L/R: 10000**

NOTE: For use by turbojet aircraft only.  
 NOTE: Non-RNAV capable props: file and expect DALLAS or GARLAND DEPARTURE.  
 NOTE: RNAV capable props: file and expect the KUSSO RNAV DEPARTURE.

TRYTN FOUR DEPARTURE (RNAV)  
 (TRYTN4, TRYTN) 08SEP22  
 DALLAS-FORT WORTH INTL (DFW)

(TRYTN4, TRYTN) 24305  
 TRYTN FOUR DEPARTURE (RNAV)  
 AL-6039 (FAA)  
 DALLAS-FORT WORTH INTL (DFW)  
 DALLAS-FORT WORTH, TEXAS



NOTE: Chart not to scale.

(CONTINUED ON FOLLOWING PAGE)



DEPARTURE ROUTE DESCRIPTION

TAKEOFF RWY 17C: Climb on heading 176° to intercept course 157° to SPERA, then on track 107° to cross JGIRL at or above 5000, then on track 084° to CORTS, then on track 069° to TRRCH, thence. . . .

TAKEOFF RWY 17R: Climb on heading 176° to intercept course 155° to SPERA, then on track 107° to cross JGIRL at or above 5000, then on track 084° to CORTS, then on track 069° to TRRCH, thence. . . .

TAKEOFF RWY 18L: Climb on heading 176° to intercept course 145° to SPERA, then on track 107° to cross JGIRL at or above 5000, then on track 084° to CORTS, then on track 069° to TRRCH, thence. . . .

TAKEOFF RWY 18R: Climb on heading 176° to intercept course 143° to SPERA, then on track 107° to cross JGIRL at or above 5000, then on track 084° to CORTS, then on track 069° to TRRCH, thence. . . .

TAKEOFF RWYS 35L/C: Climb on heading 356° to 1120, then direct to cross CUZEN at or above 5000, then on track 082° to cross FEZTR at or above 7000, then on track 095° to SWYFT, then on track 108° to TRRCH, thence. . . .

TAKEOFF RWY 36L: Climb on heading 356° to intercept course 006° to cross CUZEN at or above 5000, then on track 082° to cross FEZTR at or above 7000, then on track 095° to SWYFT, then on track 108° to TRRCH, thence. . . .

TAKEOFF RWY 36R: Climb on heading 356° to intercept course 004° to cross CUZEN at or above 5000, then on track 082° to cross FEZTR at or above 7000, then on track 095° to SWYFT, then on track 108° to TRRCH, thence. . . .

. . . .on track 065° to JAYXX, then on track 065° to TRYTN, then on (transition) maintain 10000. Expect filed altitude 10 minutes after departure.

TAKEOFF RWYS 31L/R: Climb on heading assigned by ATC, expect RADAR vectors to TRRCH, thence. . . .

. . . .on track 065° to JAYXX, then on track 065° to TRYTN, then on (transition) maintain 5000. Expect filed altitude 10 minutes after departure.

LOOSE TRANSITION (TRYTN4.LOOSE)

SC-2, 14 MAY 2026 to 11 JUN 2026

SC-2, 14 MAY 2026 to 11 JUN 2026