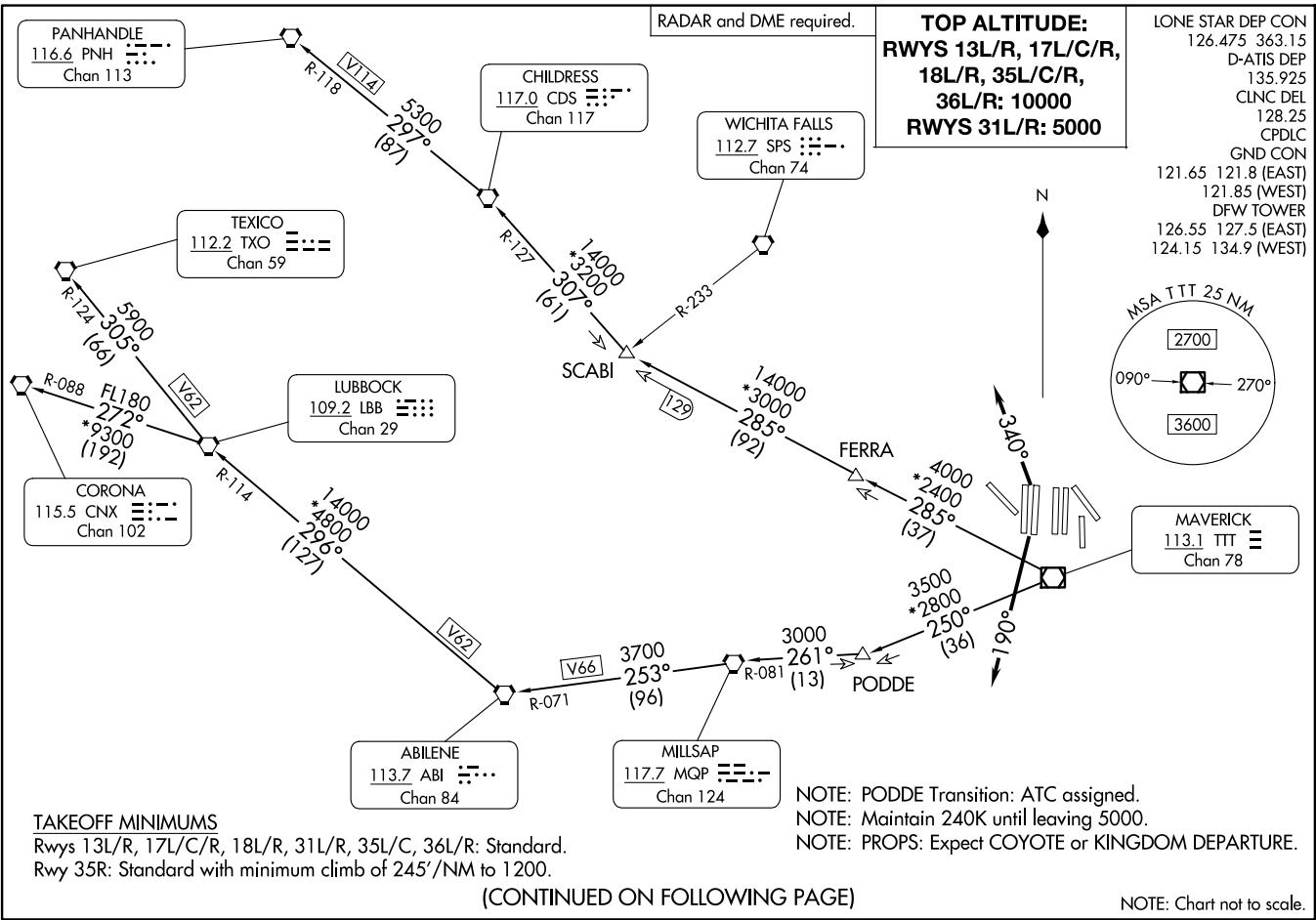


WORTH ONE DEPARTURE  
(WORTH1.TTT) 251ANZ4

DALLAS-FORT WORTH, TEXAS  
DALLAS-FORT WORTH INTL (DFW)



WORTH ONE DEPARTURE  
(WORTH1.TTT) 24305

AL-6039 (FAA)

DALLAS-FORT WORTH INTL (DFW)  
DALLAS-FORT WORTH, TEXAS

PANHANDLE  
116.6 PNH  
Chan 113

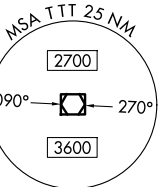
CHILDRESS  
117.0 CDS  
Chan 117

WICHITA FALLS  
112.7 SPS  
Chan 74

TEXICO  
112.2 TXO  
Chan 59

LUBBOCK  
109.2 LBB  
Chan 29

CORONA  
115.5 CNX  
Chan 102



MAVERICK  
113.1 TTT  
Chan 78

ABILENE  
113.7 ABI  
Chan 84

MILLSAP  
117.7 MQP  
Chan 124

**TOP ALTITUDE:**  
**RWYS 13L/R, 17L/C/R,**  
**18L/R, 35L/C/R,**  
**36L/R: 10000**  
**RWYS 31L/R: 5000**

LONE STAR DEP CON  
126.475 363.15  
D-ATIS DEP  
135.925  
CLNC DEL  
128.25  
CPDLC  
GND CON  
121.65 121.8 (EAST)  
121.85 (WEST)  
DFW TOWER  
126.55 127.5 (EAST)  
124.15 134.9 (WEST)

**TAKEOFF MINIMUMS**  
Rwys 13L/R, 17L/C/R, 18L/R, 31L/R, 35L/C, 36L/R: Standard.  
Rwy 35R: Standard with minimum climb of 245'/NM to 1200.

NOTE: PODDE Transition: ATC assigned.  
NOTE: Maintain 240K until leaving 5000.  
NOTE: PROPS: Expect COYOTE or KINGDOM DEPARTURE.

(CONTINUED ON FOLLOWING PAGE)

NOTE: Chart not to scale.

# WORTH ONE DEPARTURE



## DEPARTURE ROUTE DESCRIPTION

TAKEOFF RUNWAYS 13L/R, 17L/C/R, 35L/C/R: Climb on assigned heading thence. . . .

TAKEOFF RUNWAYS 18L/R: Climb on heading 190°, thence. . . .

TAKEOFF RUNWAYS 36L/R: Climb on heading 340°, thence. . . .

. . . .for RADAR vectors to appropriate route, maintain 10000 and expect filed altitude 10 minutes after departure.

TAKEOFF RUNWAYS 31L/R: Climb on assigned heading and altitude, thence. . . .

. . . .for RADAR vectors to appropriate route, maintain 5000 and expect filed altitude 10 minutes after departure.

ABILENE TRANSITION (WORTH1.ABI): From over TTT VOR/DME on TTT R-250 to PODDE, then on MQP R-081 to MQP VORTAC, then on MQP R-253 and ABI R-071 to ABI VORTAC.

CHILDRESS TRANSITION (WORTH1.CDS): From over TTT VOR/DME on TTT R-285 to SCABI, then on CDS R-127 to CDS VORTAC.

CORONA TRANSITION (WORTH1.CNX): From over TTT VOR/DME on TTT R-250 to PODDE, then on MQP R-081 to MQP VORTAC, then on MQP R-253 and ABI R-071 to ABI VORTAC, then on ABI R-296 and LBB R-114 to LBB VORTAC, then on LBB R-272 and CNX R-088 to CNX VORTAC.

LUBBOCK TRANSITION (WORTH1.LBB): From over TTT VOR/DME on TTT R-250 to PODDE, then on MQP R-081 to MQP VORTAC, then on MQP R-253 and ABI R-071 to ABI VORTAC, then on ABI R-296 and LBB R-114 to LBB VORTAC.

PANHANDLE TRANSITION (WORTH1.PNH): From over TTT VOR/DME on TTT R-285 to SCABI, then on CDS R-127 to CDS VORTAC, then on CDS R-297 and PNH R-118 to PNH VORTAC.

PODDE TRANSITION (WORTH1.PODDE): From over TTT VOR/DME on TTT R-250 to PODDE.

TEXICO TRANSITION (WORTH1.TXO): From over TTT VOR/DME on TTT R-250 to PODDE, then on MQP R-081 to MQP VORTAC, then on MQP R-253 and ABI R-071 to ABI VORTAC, then on ABI R-296 and LBB R-114 to LBB VORTAC, then on LBB R-305 and TXO R-124 to TXO VORTAC.

SC-2, 14 MAY 2026 to 11 JUN 2026

SC-2, 14 MAY 2026 to 11 JUN 2026

# WORTH ONE DEPARTURE