

WAAS CH <b>56238</b> <b>W28A</b>	APP CRS <b>276°</b>	Rwy Ldg TDZE Apt Elev	<b>5003</b> <b>975</b> <b>994</b>
--	------------------------	-----------------------------	---

# RNAV (GPS) RWY 28

ROBEN-HOOD (RQB)

RNP APCH - GPS.

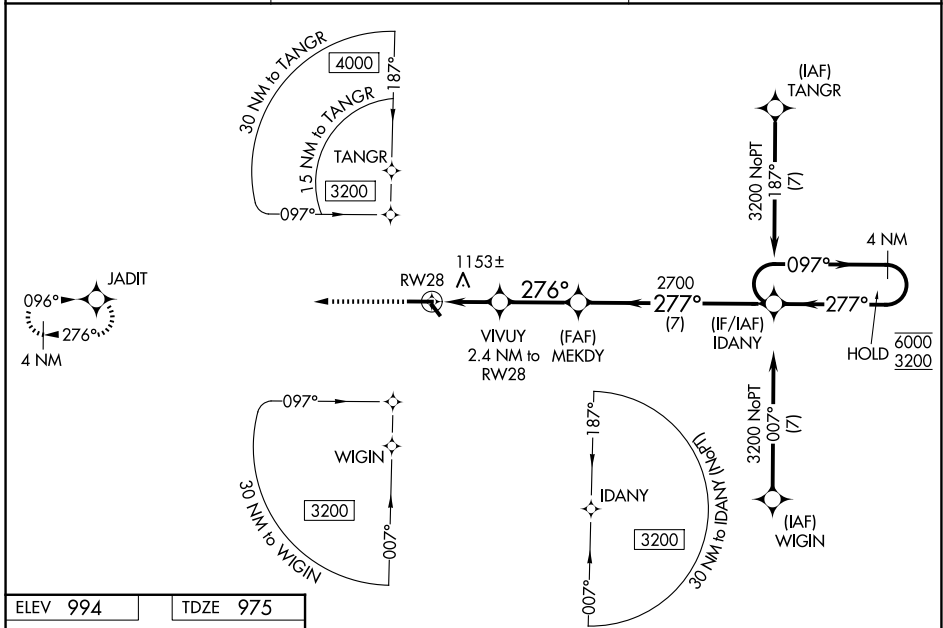
**⚠** Rwy 28 helicopter visibility reduction below  $\frac{3}{4}$  SM NA. For uncompensated Baro-VNAV systems, LNAV/VNAV NA below -16°C or above 54°C. Baro-VNAV and VDP NA when using MKG altimeter setting. When local altimeter setting not received, use MKG altimeter setting; increase LPV DA to 1383 feet and all visibilities  $\frac{1}{8}$  SM; increase LNAV/VNAV DA to 1598 feet and all visibilities  $\frac{3}{8}$  SM; increase all MDAs 160 feet.

MISSED APPROACH:  
Climb to 3000 direct  
JADIT and hold.

AWOS-3P  
**125.875**

MINNEAPOLIS CENTER  
**120.85 322.35**

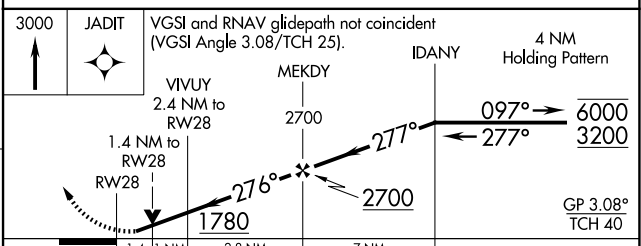
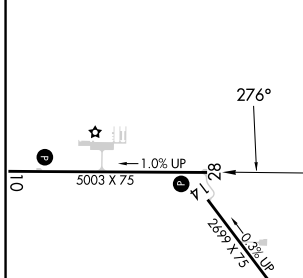
UNICOM  
**122.8 (CTAF) 0**



EC-1, 14 MAY 2026 to 11 JUN 2026

EC-1, 14 MAY 2026 to 11 JUN 2026

ELEV 994	TDZE 975
----------	----------



CATEGORY	A	B	C	D
LPV DA	1225-1	250 (300-1)		NA
LNAV/VNAV DA	1440-1 $\frac{3}{8}$	465 (500-1 $\frac{3}{8}$ )		NA
LNAV MDA	1440-1	465 (500-1)		NA
CIRCLING	1520-1 526 (600-1)	1560-1 566 (600-1)		NA

REIL Rwy 10 and 28 **0**  
MIRL Rwy 10-28 and 14-32 **0**