

WAAS CH 99529 W26A	APP CRS 262°	Rwy Ldg TDZE Apt Elev	3501 741 741
--	------------------------	-----------------------------	---

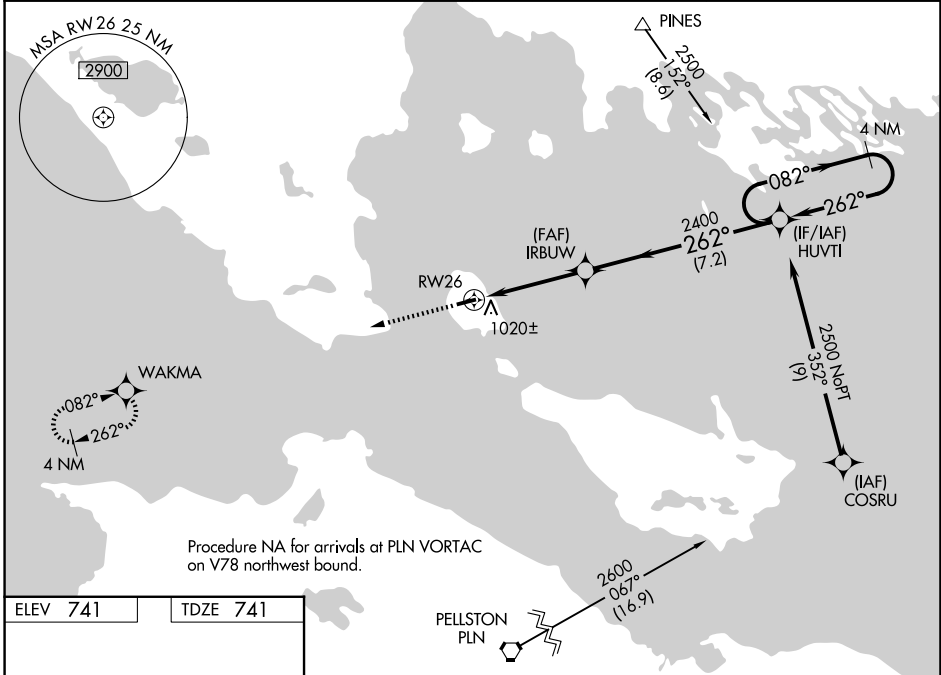
RNAV (GPS) RWY 26

MACKINAC ISLAND (MCD)

⚠ Baro-VNAV NA when using Pellston altimeter setting. For uncompensated Baro-VNAV systems, LNAV/VNAV NA below -16°C (4°F) or above 54°C (130°F). When local altimeter setting not received, use Pellston altimeter setting and increase all DA 47 feet and all MDA 60 feet, increase LNAV Cat C visibility 1/8 mile and Circling Cat C visibility 1/4 mile. DME/DME RNP-0.3 NA. Helicopter visibility reduction below 1 SM NA. Night landing: Rwy 8 NA.

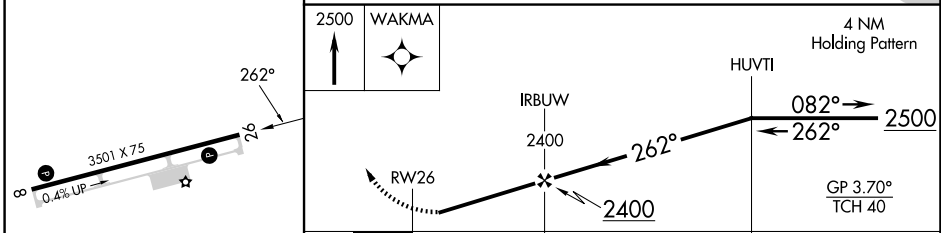
MISSED APPROACH:
Climb to 2500 direct WAKMA and hold.

AWOS-3P 118.275	MINNEAPOLIS CENTER 134.6 354.05	UNICOM 122.7 (CTAF)	122.80
---------------------------	---	-------------------------------	---------------



Procedure NA for arrivals at PLN VORTAC on V78 northwest bound.

ELEV 741	TDZE 741
-----------------	-----------------



2500	WAKMA	4 NM Holding Pattern
IRBUW	2400	HUVTI
RWY 26	2400	2500
4.1 NM	7.2 NM	GP 3.70° TCH 40

CATEGORY	A	B	C	D
LPV DA	1058-1	317 (400-1)	NA	
LNAV/VNAV DA	1182-1 ³ / ₈	441 (500-1 ³ / ₈)	NA	
LNAV MDA	1280-1	539 (600-1)	1280-1 ¹ / ₂ 539 (600-1 ¹ / ₂)	NA
CIRCLING	1320-1	579 (600-1)	1320-1 ¹ / ₂ 579 (600-1 ¹ / ₂)	NA

MIRL Rwy 8-26 **1**
REIL Rwy 8 and 26 **1**