

WAAS CH <b>70541</b> <b>W28A</b>	APP CRS <b>276°</b>	Rwy Ldg TDZE Apt Elev	<b>4201</b> <b>1090</b> <b>1090</b>
--	------------------------	-----------------------------	---

# RNAV (GPS) RWY 28

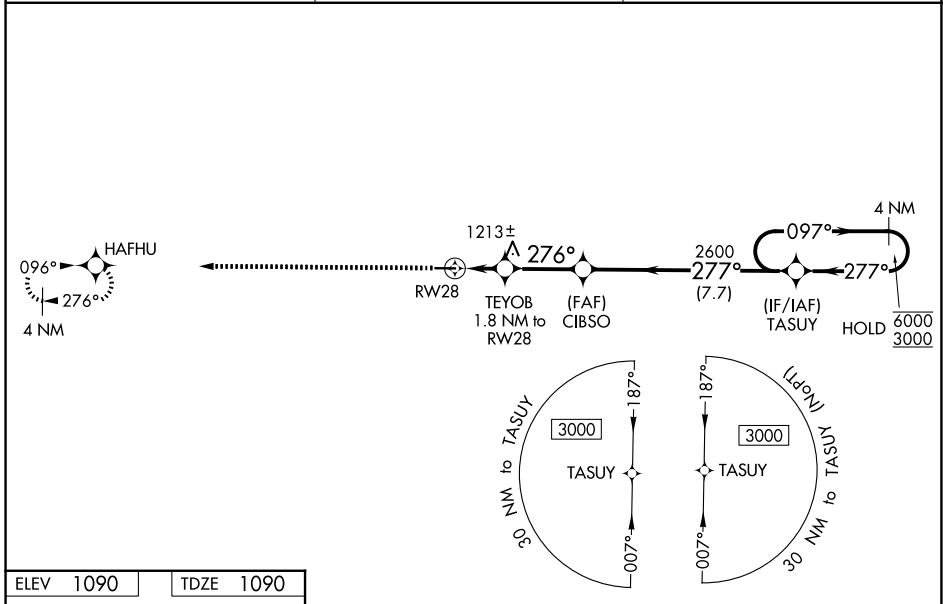
NEW CASTLE HENRY COUNTY MARLATT FLD (UWL)

RNP APCH - GPS.

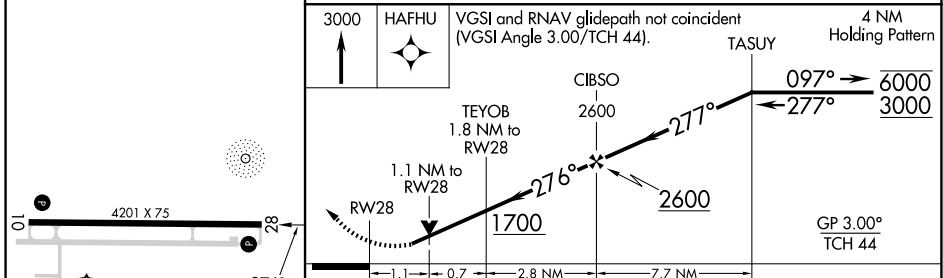
**▼** Rwy 28 helicopter visibility reduction below ¾ SM NA. For uncompensated Baro-VNAV systems, LNAV/VNAV NA below -17°C or above 54°C. Baro-VNAV and VDP NA when using AID altimeter setting. When local altimeter setting not received, use AID altimeter setting; increase LPV DA to 1412 feet; increase LNAV/VNAV DA to 1549 feet and all visibilities ¼ SM; increase all MDAs 80 feet and LNAV visibility Cats C and D ¼ SM, and Circling visibility Cats C and D ½ SM.

**▲** MISSED APPROACH: Climb to 3000 direct HAFHU and hold.

AWOS-3 <b>132.375</b>	INDIANAPOLIS APP CON <b>135.45 317.8</b>	UNICOM <b>123.05 (CTAF) 0</b>
--------------------------	---	----------------------------------



ELEV 1090	TDZE 1090
-----------	-----------



MIRL Rwy 10-28 0	REIL Rwy 10 and 28 0																									
<table border="1" style="width: 100%;"> <thead> <tr> <th>CATEGORY</th> <th>A</th> <th>B</th> <th>C</th> <th>D</th> </tr> </thead> <tbody> <tr> <td>LPV DA</td> <td colspan="2">1343-1</td> <td colspan="2">253 (300-1)</td> </tr> <tr> <td>LNAV/VNAV DA</td> <td colspan="2">1480-1½</td> <td colspan="2">390 (400-1½)</td> </tr> <tr> <td>LNAV MDA</td> <td>1480-1</td> <td>390 (400-1)</td> <td>1480-1½</td> <td>390 (400-1½)</td> </tr> <tr> <td>CIRCLING</td> <td>1520-1 430 (500-1)</td> <td>1540-1 450 (500-1)</td> <td>1760-1¾ 670 (700-1¾)</td> <td>1760-2 670 (700-2)</td> </tr> </tbody> </table>		CATEGORY	A	B	C	D	LPV DA	1343-1		253 (300-1)		LNAV/VNAV DA	1480-1½		390 (400-1½)		LNAV MDA	1480-1	390 (400-1)	1480-1½	390 (400-1½)	CIRCLING	1520-1 430 (500-1)	1540-1 450 (500-1)	1760-1¾ 670 (700-1¾)	1760-2 670 (700-2)
CATEGORY	A	B	C	D																						
LPV DA	1343-1		253 (300-1)																							
LNAV/VNAV DA	1480-1½		390 (400-1½)																							
LNAV MDA	1480-1	390 (400-1)	1480-1½	390 (400-1½)																						
CIRCLING	1520-1 430 (500-1)	1540-1 450 (500-1)	1760-1¾ 670 (700-1¾)	1760-2 670 (700-2)																						

EC-2, 14 MAY 2026 to 11 JUN 2026

EC-2, 14 MAY 2026 to 11 JUN 2026