

WAAS CH 45747 W05A	APP CRS 040°	Rwy Ldg TDZE Apt Elev	5097 980 980
--	------------------------	-----------------------------	---

RNAV (GPS) RWY 5

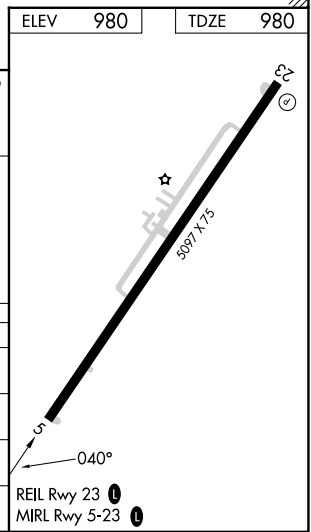
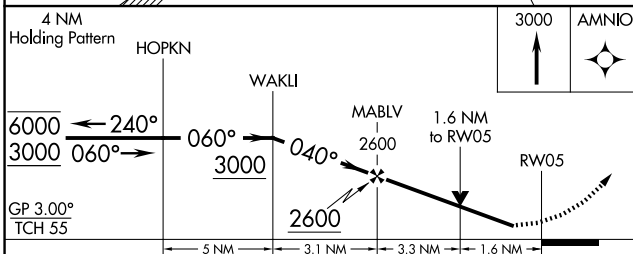
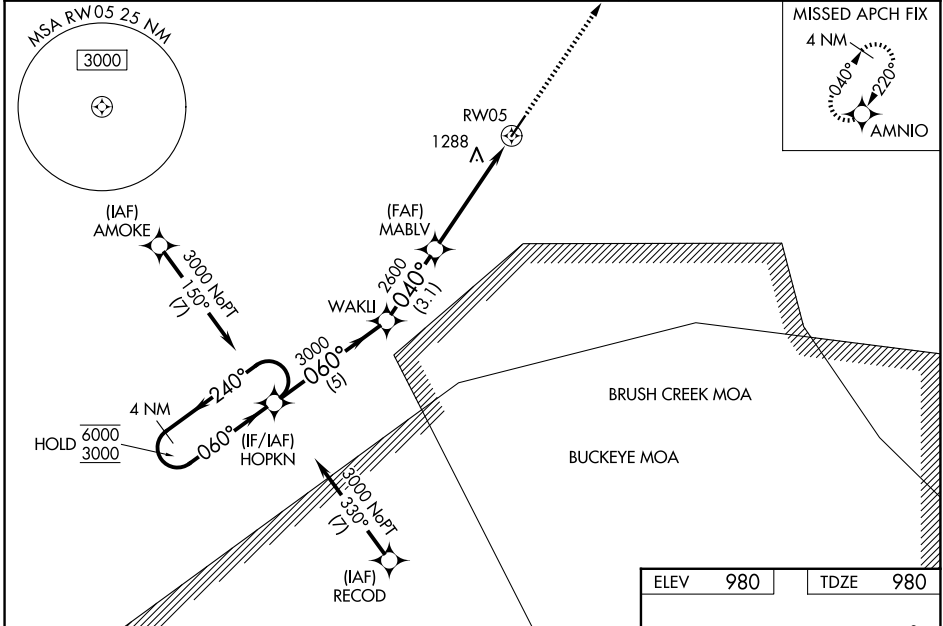
FAYETTE COUNTY (I23)

RNP APCH - GPS.

▼ Rwy 5 helicopter visibility reduction below ¼ SM NA. For uncompensated Baro-VNAV systems, LNAV/VNAV NA below -1.6°C or above 54°C. Baro-VNAV and VDP NA when using I66 altimeter setting. Circling Rwy 23 NA at night. When local altimeter setting not received, use I66 altimeter setting and increase LPV DA to 1287 feet; increase LNAV/VNAV DA to 1597 feet and all visibilities ½ SM. Increase all MDAs 60 feet and LNAV visibility Cat C/D ½ SM, and Circling visibility Cat C ¼ SM.

MISSED APPROACH: Climb to 3000 direct AMNIO and hold.

AWOS-3PT 132.1	COLUMBUS APP CON 134.0 279.6	UNICOM 122.8 (CTAF) 0
--------------------------	--	---------------------------------



CATEGORY	A	B	C	D
LPV DA	1230-1 250 (300-1)			
LNAV/VNAV DA	1540-1½ 560 (600-1½)			
LNAV MDA	1540-1	560 (600-1)	1540-1½	560 (600-1½)
CIRCLING	1540-1 560 (600-1)	1600-1 620 (700-1)	1600-1¾ 620 (700-1¾)	1660-2¼ 680 (700-2¼)

EC-2, 14 MAY 2026 to 11 JUN 2026

EC-2, 14 MAY 2026 to 11 JUN 2026