

WAAS CH <b>77818</b> <b>W07A</b>	APP CRS <b>065°</b>	Rwy Idg <b>5003</b> TDZE <b>147</b> Apt Elev <b>147</b>
--	------------------------	---

# RNAV (GPS) RWY 7

MARLBORO COUNTY JETPORT/H E AVENT FLD (B.B.P)

RNP APCH.

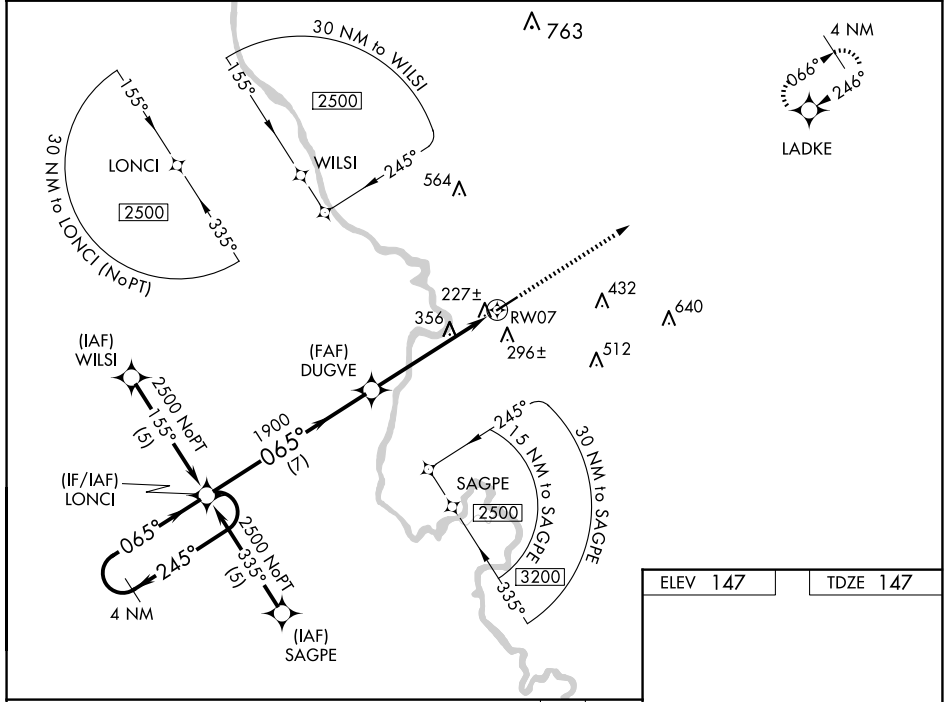
**▼** Baro-VNAV NA when using Florence altimeter setting. For uncompensated Baro-VNAV systems, LNAV/VNAV NA below -15°C or above 48°C. Rwy 7 helicopter visibility reduction below ¾ SM NA. When local altimeter setting not received, use Florence altimeter setting and increase all DA 61 feet and MDA 80 feet; increase LPV all Cats, LNAV/VNAV all Cats, and LNAV Cats C and Cat D visibility ¼ mile. VDP NA with Florence altimeter setting.

MISSED APPROACH: Climb to 2500 direct LADKE and hold.

AWOS-3PT  
**123.825**

FLORENCE APP CON ★  
**118.6 341.7**

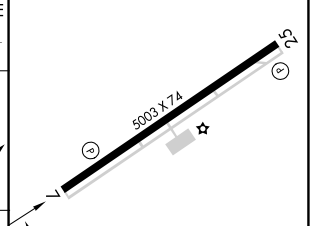
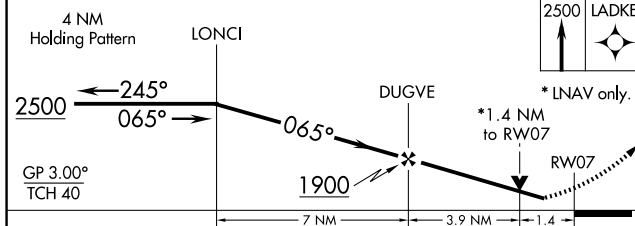
UNICOM  
**122.8 (CTAF)**



SE-2, 14 MAY 2026 to 11 JUN 2026

SE-2, 14 MAY 2026 to 11 JUN 2026

ELEV 147	TDZE 147
----------	----------



CATEGORY	A	B	C	D
LPV DA	437-1 290 (300-1)			
LNAV/VNAV DA	507-1¼ 360 (400-1¼)			
LNAV MDA	620-1 473 (500-1)	620-1¼ 473 (500-1¼)	620-1½ 473 (500-1½)	

MIRL Rwy 7-25  
REIL Rws 7 and 25