

NDB/DME MAJ 316	APP CRS 249°	Rwy Ldg 7913
Chan 114 (116.7)		TDZE 7
		Apt Elev 7

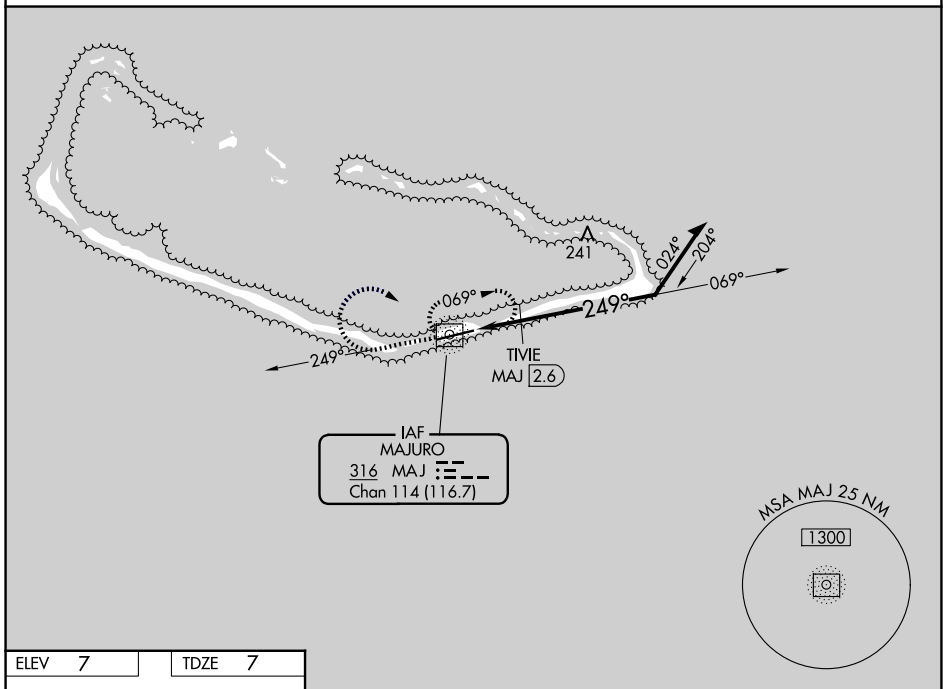
NDB RWY 25

AMATA KABUA INTL (MAJ)(PKMJ)

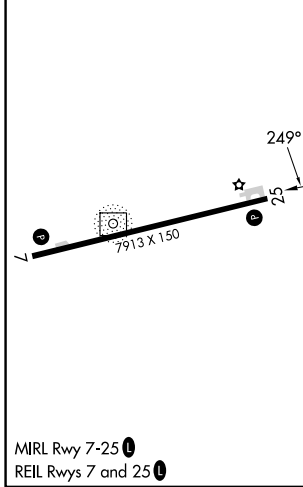
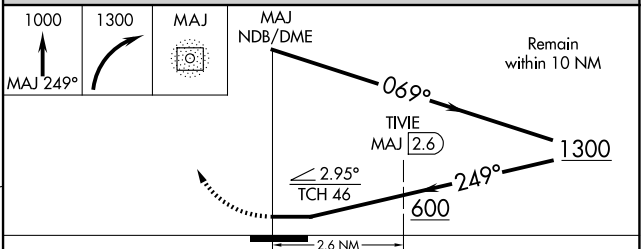
⚠ NA Rwy 25 helicopter visibility reduction below 3/4 SM NA.
Obtain local altimeter setting on CTAF; when not received, procedure NA. Uncontrolled airspace below 5500.

MISSED APPROACH: Climb to 1000 on MAJ NDB/DME bearing 249° then climbing right turn to 1300 direct MAJ NDB/DME and hold.

MAJURO RADIO
123.6 (CTAF)



ELEV 7	TDZE 7
--------	--------



CATEGORY	A	B	C	D
S-25	600-1	593 (600-1)	600-1 3/4	593 (600-1 3/4)
CIRCLING	600-1	593 (600-1)	600-1 3/4 593 (600-1 3/4)	600-2 593 (600-2)
TIVE FIX MINIMUMS (DME REQUIRED)				
S-25	520-1	513 (600-1)	520-1 3/8	513 (600-1 3/8)
CIRCLING	520-1	513 (600-1)	520-1 1/2 513 (600-1 1/2)	560-2 553 (600-2)