

APP CRS	Rwy Ldg	7913
246°	TDZE	7
	Apt Elev	7

RNAV (GPS) RWY 25

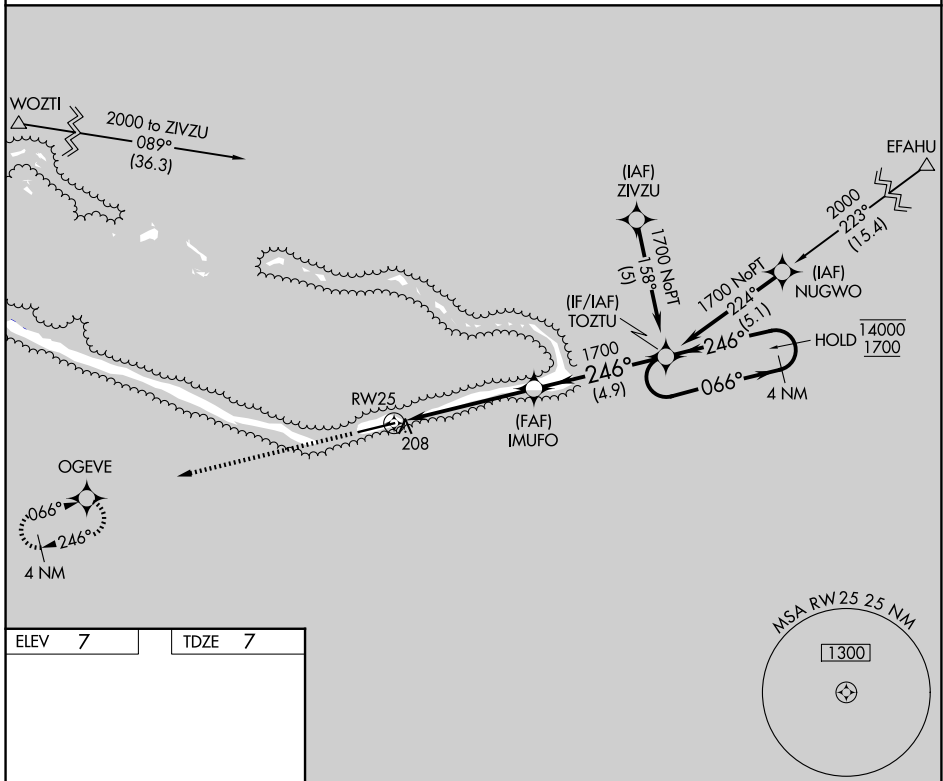
AMATA KABUA INTL (MAJ)(PKMJ)

RNP APCH-GPS.

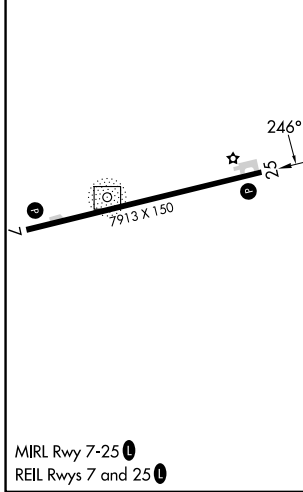
▼ Rwy 25 helicopter visibility reduction below 3/4 SM NA. Obtain local altimeter setting on CTAF; when not received, procedure NA. Uncontrolled airspace below 5500.

MISSED APPROACH: Climb to 1700 direct OGEVE and hold.

MAJURO RADIO
123.6 (CTAF) 0



ELEV	7	TDZE	7
------	---	------	---



1700	OGEVE	VGSI and RNAV glidepath not coincident (VGSI Angle 3.00/TCH 45).			
		IMUFO	TOZTU	4 NM Holding Pattern	
		1.3 NM to RW25	1700	246°	066° → 14000
		≤ 3.00° TCH 54		← 246°	1700
		1.3	3.9 NM	4.9 NM	
CATEGORY	A	B	C	D	
LNAV MDA	460-1	453 (500-1)	460-1 3/8	453 (500-1 3/8)	
CIRCLING	520-1	513 (600-1)	520-1 1/2	560-2	
			513 (600-1 1/2)	553 (600-2)	

PAC, 14 MAY 2026 to 09 JUL 2026

PAC, 14 MAY 2026 to 09 JUL 2026