

LOC/DME I-DJK 109.95 Chan 36 (Y)	APP CRS 022°	Rwy Ldg 7026	TDZE 913	Apt Elev 913
--	------------------------	------------------------	--------------------	------------------------

ILS or LOC RWY 2

DE KALB TAYLOR MUNI (DKB)

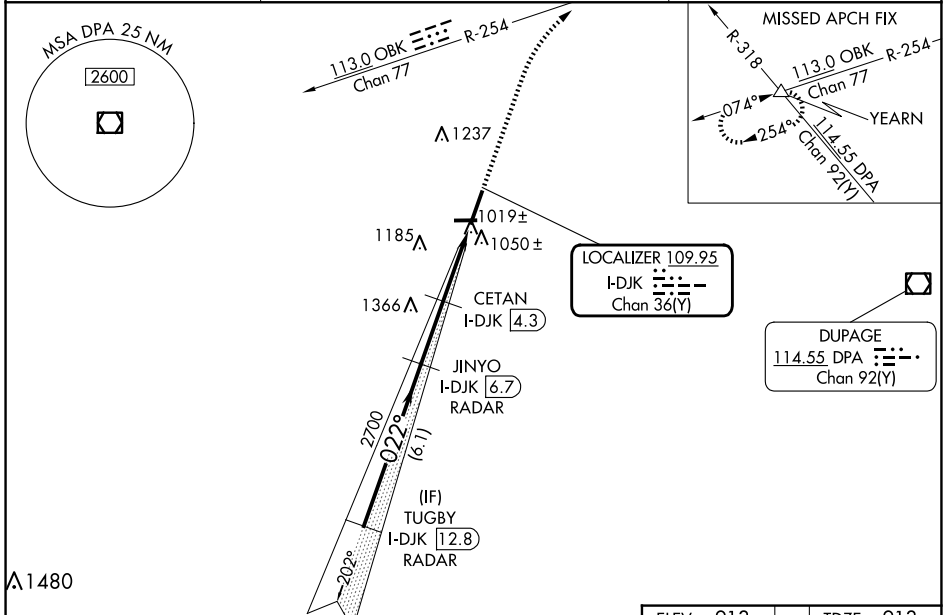
RADAR required for procedure entry. DME or RADAR required.

VDP NA with Aurora altimeter setting. When local altimeter setting not received, use Aurora altimeter setting and increase DA to 1174 feet and all MDA 80 feet; CETAN fix minimums increase Circling Cat C and D visibility 1/4 SM. For inop ALS, increase S-ILS 2 all Cats visibility to 3/8 SM. CETAN fix minimums: For inop ALS, increase S-LOC 2 Cat C and D visibility to 1 SM.

MALS

MISSED APPROACH:
Climb to 3000 on heading 022° and OBK VOR/DME R-254 to YEARN INT and hold.

AWOS-3 119.075	CHICAGO APP CON 133.5 349.0	UNICOM 122.7 (CTAF) 0
--------------------------	---------------------------------------	--



VGSI and ILS glidepath not coincident (VGSI Angle 3.00/TCH 53).

3000

hdg 022°

OBK R-254

YEARN Δ

TUGBY I-DJK 12.8 RADAR

JINYO I-DJK 6.7 RADAR

CETAN I-DJK 4.3

2700

022°

2700

1900

I-DJK 2.4

I-DJK 1.3

GS 3.00° TCH 55

6.1 NM

2.4 NM

1.9

1.1

CATEGORY	A	B	C	D
S-ILS 2	1113-1/2		200 (200-1/2)	
S-LOC 2	1900-3/4 987 (1000-3/4)	1900-1 987 (1000-1)	1900-2 1/2	987 (1000-2 1/2)
CIRCLING	1900-1 1/4 987 (1000-1 1/4)	1900-1 1/2 987 (1000-1 1/2)	1900-3	987 (1000-3)
CETAN FIX MINIMUMS (DME REQUIRED)				
S-LOC 2	1280-1/2	367 (400-1/2)	1280-5/8	367 (400-5/8)
CIRCLING	1360-1 447 (500-1)	1500-1 587 (600-1)	1600-2 687 (700-2)	1740-2 3/4 827 (900-2 3/4)

ELEV 913

TDZE 913

MIRL Rwy 2-20

MIRL Rwy 9-27

REIL Rwy 9, 20 and 27

4201 X 75

7026 X 100

2

022°

FAC to MAP 5.4 NM	Knots	60	90	120	150	180
	Min:Seq	5:24	3:36	2:42	2:10	1:48

EC-3, 14 MAY 2026 to 11 JUN 2026

EC-3, 14 MAY 2026 to 11 JUN 2026