

LOC/DME I-ECH <b>109.3</b> Chan 30	APP CRS <b>115°</b>	Rwy Ldg TDZE <b>7500</b> <b>92</b> Apt Elev <b>92</b>
--	------------------------	---

# ILS Y or LOC Y RWY 11

KETCHIKAN INTL (KTN)(PAKT)

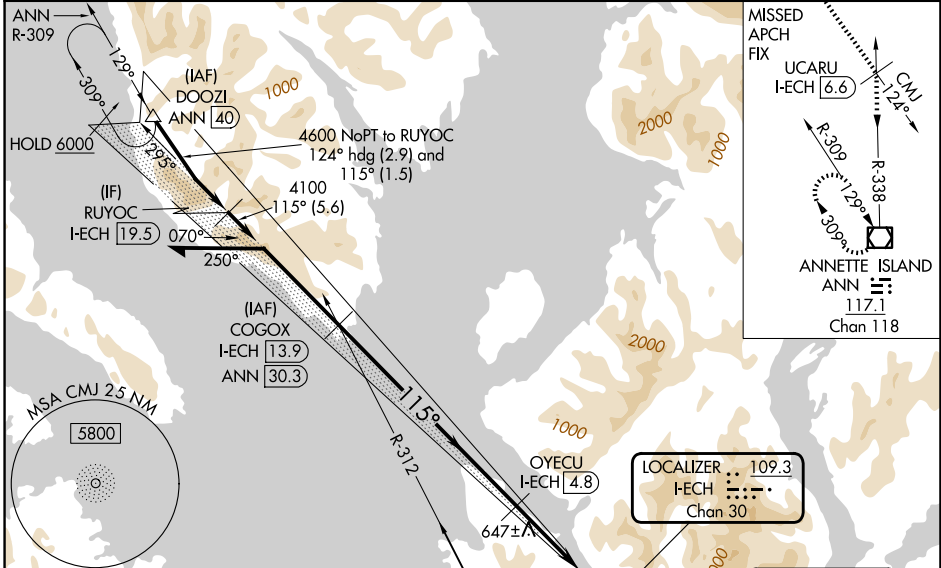
ADF required. DME required.

**⚠** Rwy 11 helicopter visibility reduction below RVR 4000 NA. For inop ALS, increase #S-ILS 11 visibility to RVR 6000.  
\*RVR 1800 authorized with the use of FD or AP or HUD to DA.

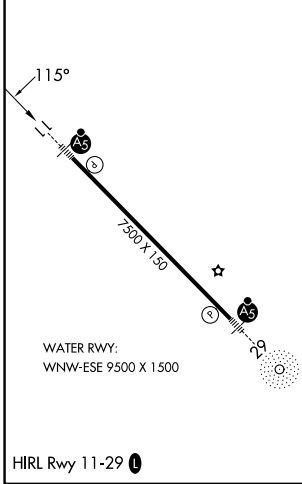
**MALS R**

**MISSED APPROACH:** Climb to 5100 direct CMJ NDB and on CMJ NDB bearing 124° to UCARU/I-ECH 6.6 DME and on ANN VOR/DME R-338 to ANN VOR/DME and hold, continue climb-in-hold to 5100.  
\*Missed approach requires minimum climb of 305 feet per NM to 4000; if unable to meet climb gradient, see LOC X RWY 11.  
#Missed approach requires minimum climb of 270 feet per NM to 4000; if unable to meet climb gradient, see LOC X RWY 11.  
Missed approach requires minimum climb of 235 feet per NM to 4000; if unable to meet climb gradient, see LOC X RWY 11.

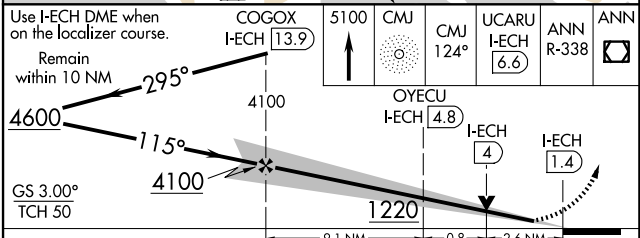
<b>AFIS</b> <b>134.45</b>	<b>ANCHORAGE CENTER</b> <b>118.5 284.6</b>	<b>KETCHIKAN RADIO</b> <b>123.6 (CTAF)</b>
------------------------------	---	---



ELEV 92	TDZE 92
---------	---------



Use I-ECH DME when on the localizer course.  
Remain within 10 NM



CATEGORY	A	B	C	D
S-ILS 11*		312/24	220 (300-½)	
S-ILS 11#		481/35	389 (400-¾)	
S-LOC 11	980/40	888 (900-¾)	980-2	888 (900-2)

AK, 14 MAY 2026 to 09 JUL 2026

AK, 14 MAY 2026 to 09 JUL 2026