

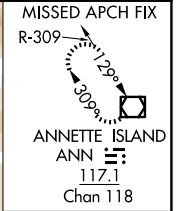
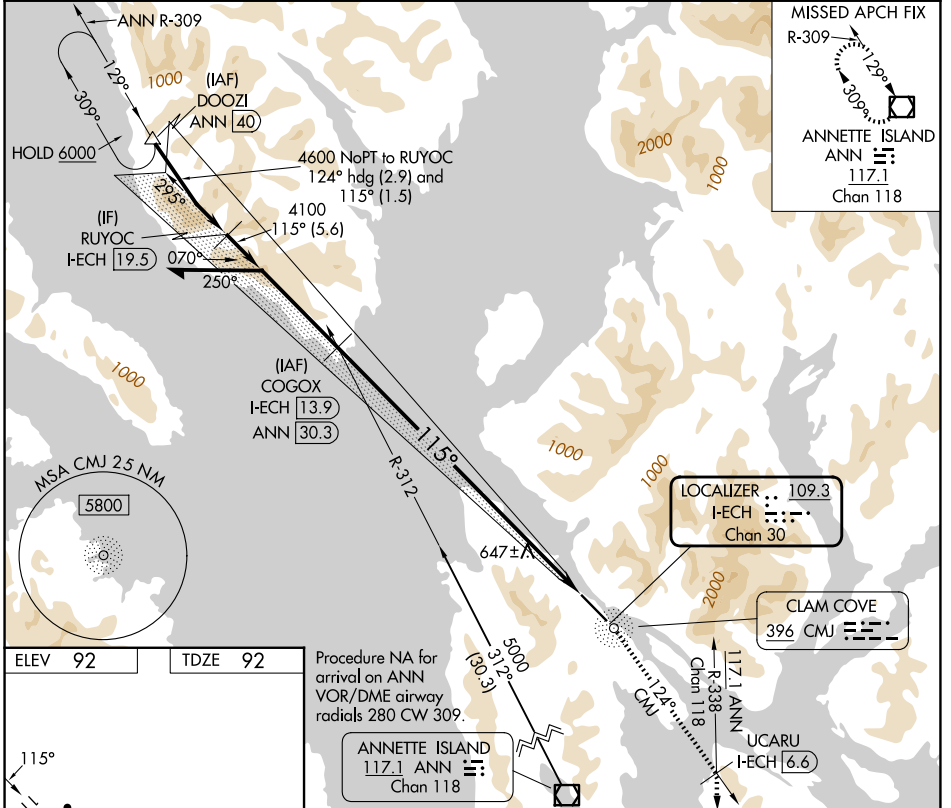
LOC/DME I-ECH 109.3 Chan 30	APP CRS 115°	Rwy Ldg 7500 TDZE 92 Apt Elev 92
--	------------------------	---

LOC X RWY 11

KETCHIKAN INTL (KTN)(PAKT)

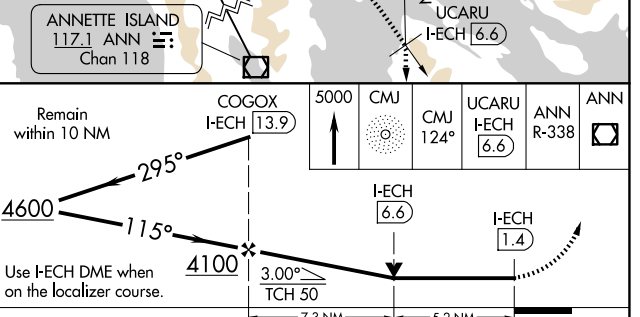
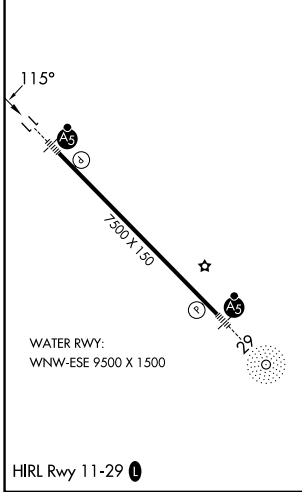
DME required. ADF required.	MALSR	MISSED APPROACH: Climb to 5000 direct CMJ NDB then on CMJ NDB bearing 124° to UCARU/I-ECH 6.6 DME and on ANN VOR/DME R-338 to ANN VOR/DME and hold.
<p>⚠ Circling NA at night. Inop table does not apply.</p> <p>⚠ Rwy 11 helicopter visibility reduction below 3/4 SM NA.</p>		

AFIS 134.45	ANCHORAGE CENTER 118.5 284.6	KETCHIKAN RADIO 123.6 (CTAF) 0
-----------------------	--	--



ELEV 92	TDZE 92
---------	---------

Procedure NA for arrival on ANN VOR/DME airway radials 280 CW 309.



CATEGORY	A	B	C	D
S-11	1780-1¼ 1688 (1700-1¼)	1780-1½ 1688 (1700-1½)	1780-3	1688 (1700-3)
CIRCLING	2100-1¼ 2008 (2100-1¼)	2640-1½ 2548 (2600-1½)	3020-3 2928 (3000-3)	3300-3 3208 (3300-3)

AK, 14 MAY 2026 to 09 JUL 2026

AK, 14 MAY 2026 to 09 JUL 2026