

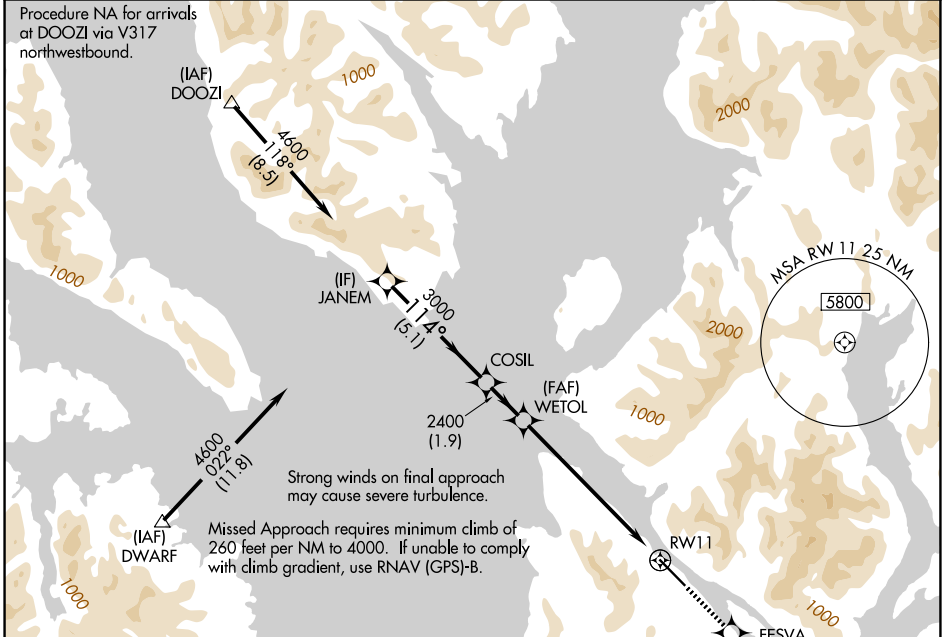
WAAS CH 58009 W11A	APP CRS 114°	Rwy Ldg TDZE Apt Elev 7500 92 92
--	------------------------	--

RNAV (GPS) RWY 11

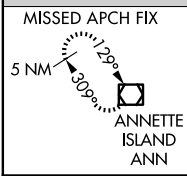
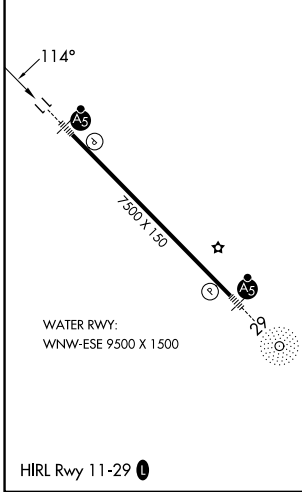
KETCHIKAN INTL (KTN)(PAKT)

RNP APCH-GPS.	MALSR	MISSED APPROACH: Climb to 5000 direct FESVA and on 150° track to ANN VOR/DME and hold.
NA For inoperative ALS, increase LPV DA visibility to RVR 6000.	AS	

AFIS 134.45	ANCHORAGE CENTER 118.5 284.6	KETCHIKAN RADIO 123.6 (CTAF) 0
-----------------------	--	--



ELEV 92	TDZE 92
---------	---------



Procedure Turn NA	JANEM	COSIL	WETOL	RWY 11
4600	3000	2400		
GP 3.00° TCH 50	5.1 NM	1.9 NM	6.8 NM	
CATEGORY	A	B	C	D
LPV DA	442/40 350 (400- $\frac{3}{4}$)			NA

AK, 14 MAY 2026 to 09 JUL 2026

AK, 14 MAY 2026 to 09 JUL 2026