

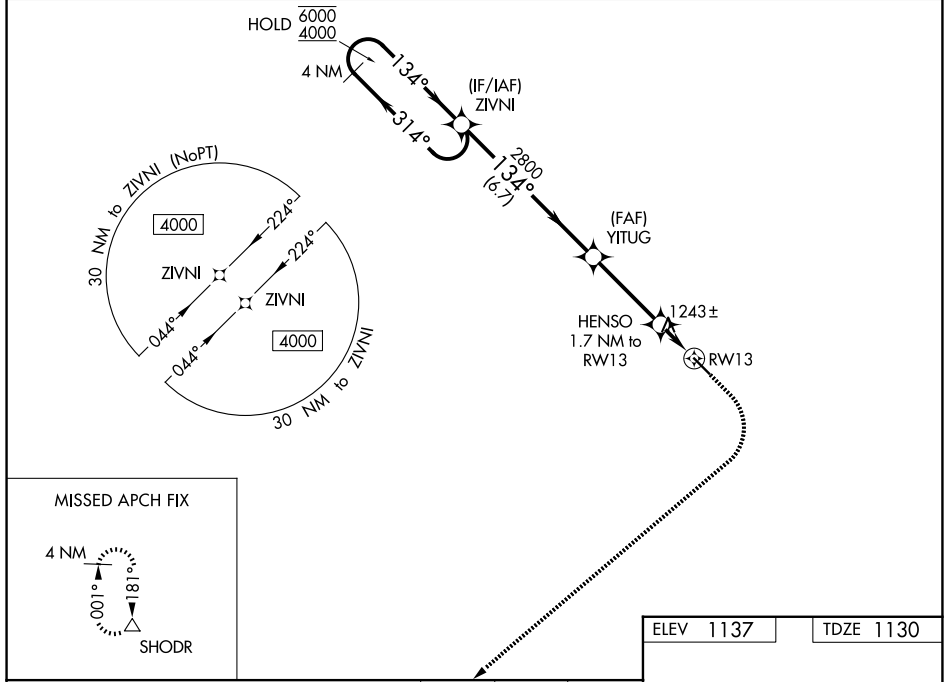
WAAS CH 53332 W13A	APP CRS 134°	Rwy Ldg TDZE Apt Elev	4602 1130 1137
--	------------------------	-----------------------------	---

RNAV (GPS) RWY 13

IOWA FALLS MUNI (IF'A)

RNP APCH - GPS.		MISSED APPROACH: Climb to 1600 then climbing right turn to 4000 direct SHODR and hold.
<p></p> <p>For uncompensated Baro-VNAV systems, LNAV/VNAV NA below -17°C or above 54°C. Circling Rwy 31 NA at night.</p>		

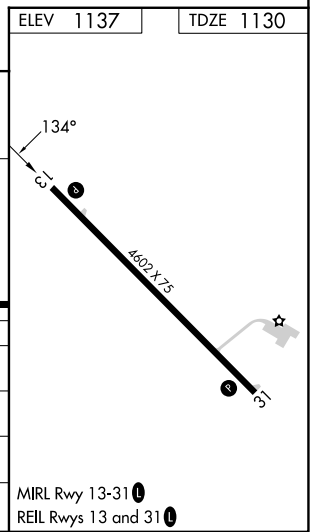
AWOS-3 120.425	DES MOINES APP CON * 118.9 251.15	UNICOM 122.8 (CTAF) 0
--------------------------	---	---------------------------------



VGSI and RNAV glidepath not coincident (VGSI Angle 3.00/TCH 44).

4 NM Holding Pattern	ZIVNI	YITUG	HENSO	SHODR
6000 ← 314°		2800	1.7 NM to RW13	△
4000 → 134°			1 NM to RW13	
GP 3.00° TCH 40		1700		
	6.7 NM	3.4 NM	0.7 NM	1 NM

CATEGORY	A	B	C	D
LPV DA		1380-1	250 (300-1)	
LNAV/VNAV DA		1395-1	265 (300-1)	
LNAV MDA		1500-1	370 (400-1)	
CIRCLING	1540-1 403 (500-1)	1620-1 483 (500-1)	1760-1¾ 623 (700-1¾)	1800-2 663 (700-2)



NC-3, 14 MAY 2026 to 11 JUN 2026

NC-3, 14 MAY 2026 to 11 JUN 2026

MIRL Rwy 13-31 0
REIL Rws 13 and 31 0