

WAAS CH <b>86732</b> <b>W31A</b>	APP CRS <b>314°</b>	Rwy Ldg TDZE Apt Elev	<b>4602</b> <b>1137</b> <b>1137</b>
--	------------------------	-----------------------------	---

# RNAV (GPS) RWY 31

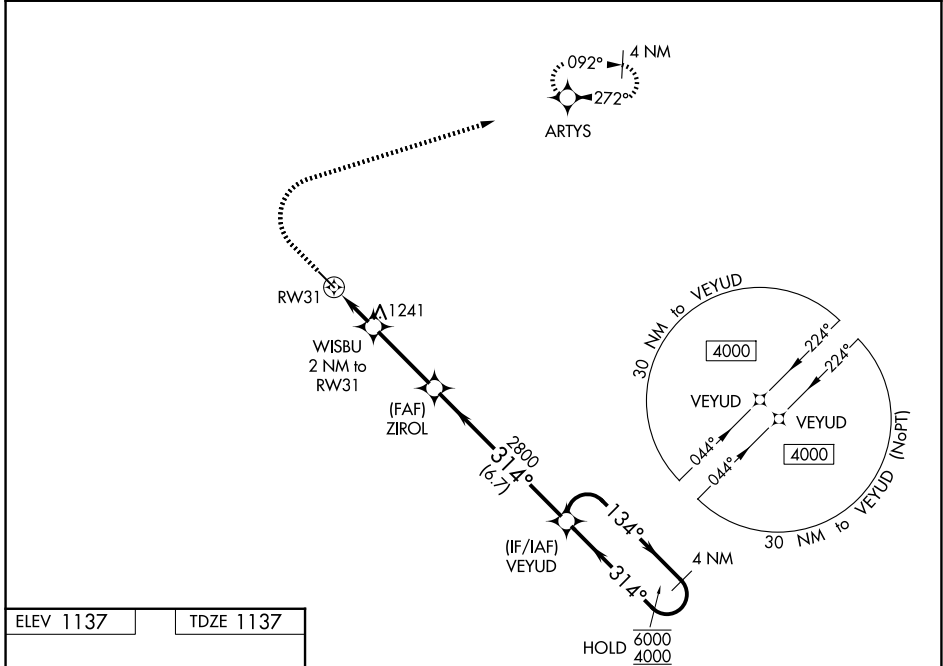
IOWA FALLS MUNI (IFA)

RNP APCH - GPS.

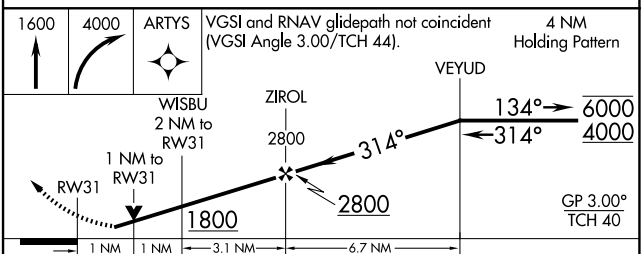
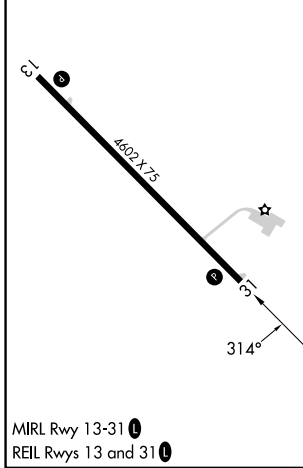
**⚠** Rwy 31 helicopter visibility reduction below 1 SM NA. For uncompensated Baro-VNAV systems, LNAV/VNAV NA below -17°C or above 54°C. Straight-in Rwy 31 NA at night, Circling Rwy 31 NA at night.

**⚠** MISSED APPROACH: Climb to 1600 then climbing right turn to 4000 direct ARTYS and hold, continue climb-in-hold to 4000.

AWOS-3 <b>120.425</b>	DES MOINES APP CON * <b>118.9 251.15</b>	UNICOM <b>122.8 (CTAF) ①</b>
--------------------------	---	---------------------------------



ELEV 1137	TDZE 1137
-----------	-----------



CATEGORY	A	B	C	D
LPV DA		1387-1	250 (300-1)	
LNAV/VNAV DA		1398-1	261 (300-1)	
LNAV MDA		1500-1	363 (400-1)	
CIRCLING	1540-1 403 (500-1)	1620-1 483 (500-1)	1760-1 3/4 623 (700-1 3/4)	1800-2 663 (700-2)

IOWA FALLS, IOWA  
Amdt 2B 16MAY24

42°28'N-93°16'W

# RNAV (GPS) RWY 31

NC-3, 14 MAY 2026 to 11 JUN 2026

NC-3, 14 MAY 2026 to 11 JUN 2026