

APP CRS	Rwy Ldg	4201
172°	TDZE	2009
	Apt Elev	2012

RNAV (GPS) RWY 17

LARNED-PAWNEE COUNTY (LQR)

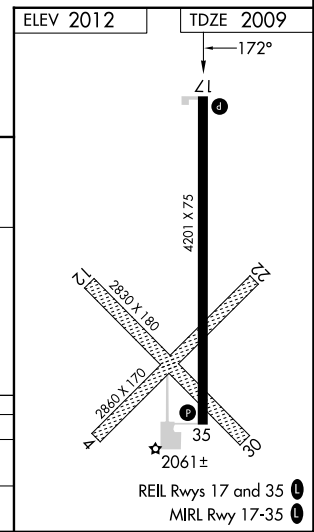
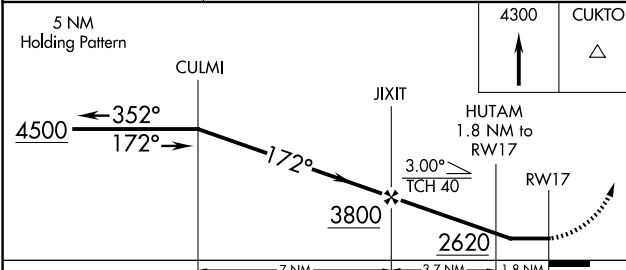
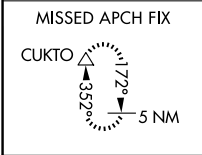
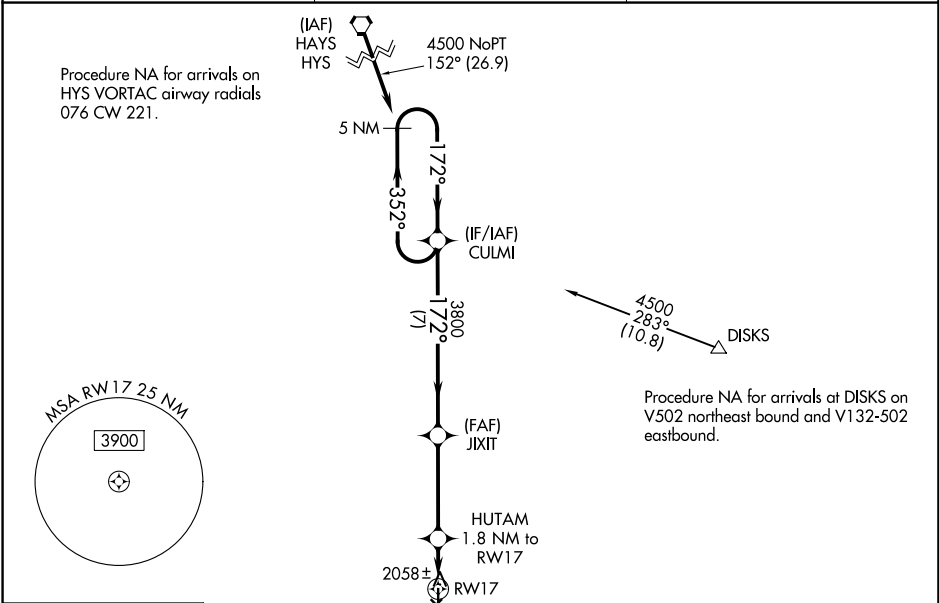
⚠ DME/DME RNP-0.3 NA. Procedure NA at night. Visibility reduction by helicopters NA. When local altimeter setting not received, use Great Bend altimeter setting: increase all MDA 60 feet and Circling Cat C visibility 1/4 mile. Circling NA to Rwy's 4, 12, 22 and 30.

⚠ MISSED APPROACH: Climb to 4300 direct CUKTO and hold.

AWOS-3PT
119.875

KANSAS CITY CENTER
124.4 322.4

UNICOM
122.8 (CTAF) ①



CATEGORY	A	B	C	D
LNVA MDA	2320-1 311 (400-1)			NA
CIRCLING	2500-1 488 (500-1)	2600-1 588 (600-1)	2640-1 3/4 628 (700-1 3/4)	NA

NC-2, 14 MAY 2026 to 11 JUN 2026

NC-2, 14 MAY 2026 to 11 JUN 2026