

(BLOKR8.BLOKR) 26078

AL-6063 (FAA)

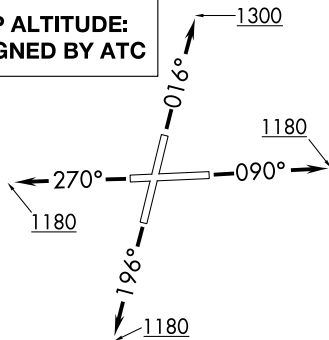
LEWIS UNIVERSITY (L.O.T)
CHICAGO/ROMEOVILLE, ILLINOIS

BLOKR EIGHT DEPARTURE (RNAV)

CHICAGO DEP CON
119.35 354.075
D-ATIS
126.675
GND CON
120.425
LEWIS TOWER ★
134.8 (CTAF)

RNAV 1 - DME/DME/IRU or GPS.
RADAR required.

**TOP ALTITUDE:
ASSIGNED BY ATC**

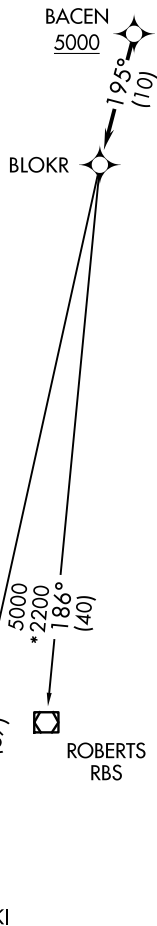
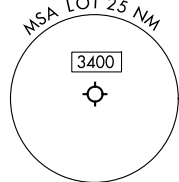


TAKEOFF MINIMUMS:

- Rwy 2: Standard with minimum climb of 420'/NM to 2700.
- Rwy 9: Standard with minimum climb of 310'/NM to 2700.
- Rwy 20: Standard with minimum climb of 370'/NM to 2700.
- Rwy 27: Standard with minimum climb of 340'/NM to 2700.

NOTE: Turbojet departures maintain 250K until advised by ATC.

NOTE: ROBERTS Transition: For aircraft inbound to CMI or STL, or as assigned by ATC.



DEPARTURE ROUTE DESCRIPTION

TAKEOFF RUNWAY 2: Climb on heading 016° to 1300, for vectors to BACEN, thence. . .

TAKEOFF RUNWAY 9: Climb on heading 090° to 1180, for vectors to BACEN, thence. . .

TAKEOFF RUNWAY 20: Climb on heading 196° to 1180, for vectors to BACEN, thence. . .

TAKEOFF RUNWAY 27: Climb on heading 270° to 1180, for vectors to BACEN, thence. . .

. . . on track 195° to BLOKR, then on transition, maintain ATC assigned altitude. Expect filed altitude 10 minutes after departure.

BEKKI TRANSITION (BLOKR8.BEKKI):

ROBERTS TRANSITION (BLOKR8.RBS):

NOTE: Chart not to scale.

EC-3, 14 MAY 2026 to 11 JUN 2026

EC-3, 14 MAY 2026 to 11 JUN 2026

BLOKR EIGHT DEPARTURE (RNAV)

(BLOKR8.BLOKR) 19MAR26

CHICAGO/ROMEOVILLE, ILLINOIS
LEWIS UNIVERSITY (L.O.T)