

(CARYN8.CARYN) 26078

AL-6063 (FAA)

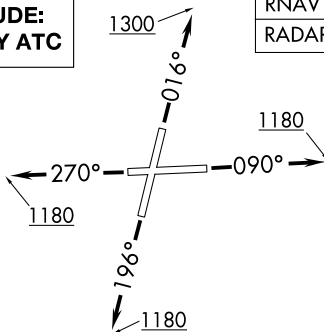
LEWIS UNIVERSITY (L.O.T)
CHICAGO/ROMEOVILLE, ILLINOIS

CARYN EIGHT DEPARTURE (RNAV)

CHICAGO DEP CON
119.35 354.075
D-ATIS
126.675
GND CON
120.425
LEWIS TOWER *
134.8 (CTAF)

**TOP ALTITUDE:
ASSIGNED BY ATC**

RNAV 1 - DME/DME/IRU or GPS.
RADAR required.



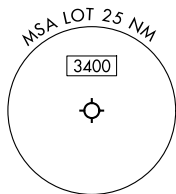
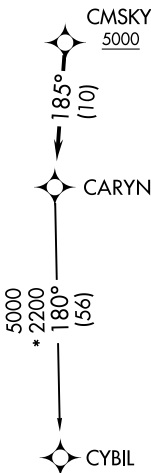
NOTE: Turbojet departures maintain 250K until advised by ATC.

TAKEOFF MINIMUMS:

Rwys 20, 27: Standard.

Rwy 2: Standard with minimum climb of 420'/NM to 2700.

Rwy 9: Standard with minimum climb of 260'/NM to 2700.



NOTE: Chart not to scale.

DEPARTURE ROUTE DESCRIPTION

TAKEOFF RUNWAY 2: Climb on heading 016° to 1300, for vectors to CMSKY, thence....

TAKEOFF RUNWAY 9: Climb on heading 090° to 1180, for vectors to CMSKY, thence....

TAKEOFF RUNWAY 20: Climb on heading 196° to 1180, for vectors to CMSKY, thence....

TAKEOFF RUNWAY 27: Climb on heading 270° to 1180, for vectors to CMSKY, thence....

....on track 185° to CARYN, then on transition. Maintain ATC assigned altitude.
Expect filed altitude 10 minutes after departure.

CYBIL TRANSITION (CARYN8.CYBIL):

CARYN EIGHT DEPARTURE (RNAV)

(CARYN8.CARYN) 19MAR26

CHICAGO/ROMEOVILLE, ILLINOIS
LEWIS UNIVERSITY (L.O.T)

EC-3, 14 MAY 2026 to 11 JUN 2026

EC-3, 14 MAY 2026 to 11 JUN 2026