

APP CRS <b>012°</b>	Rwy Ldg TDZE Apt Elev	<b>5004</b> <b>278</b> <b>278</b>
------------------------	-----------------------------	---

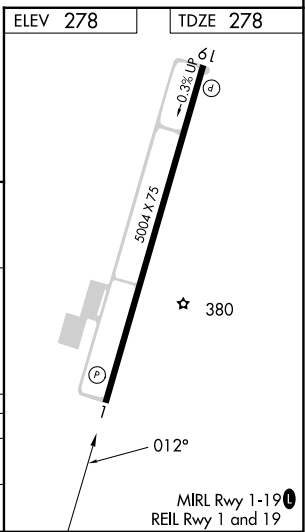
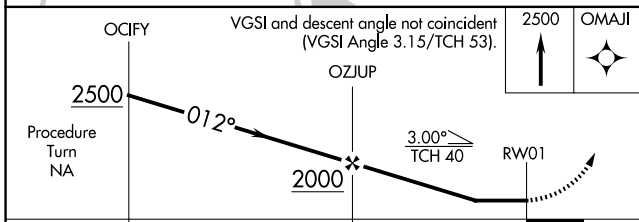
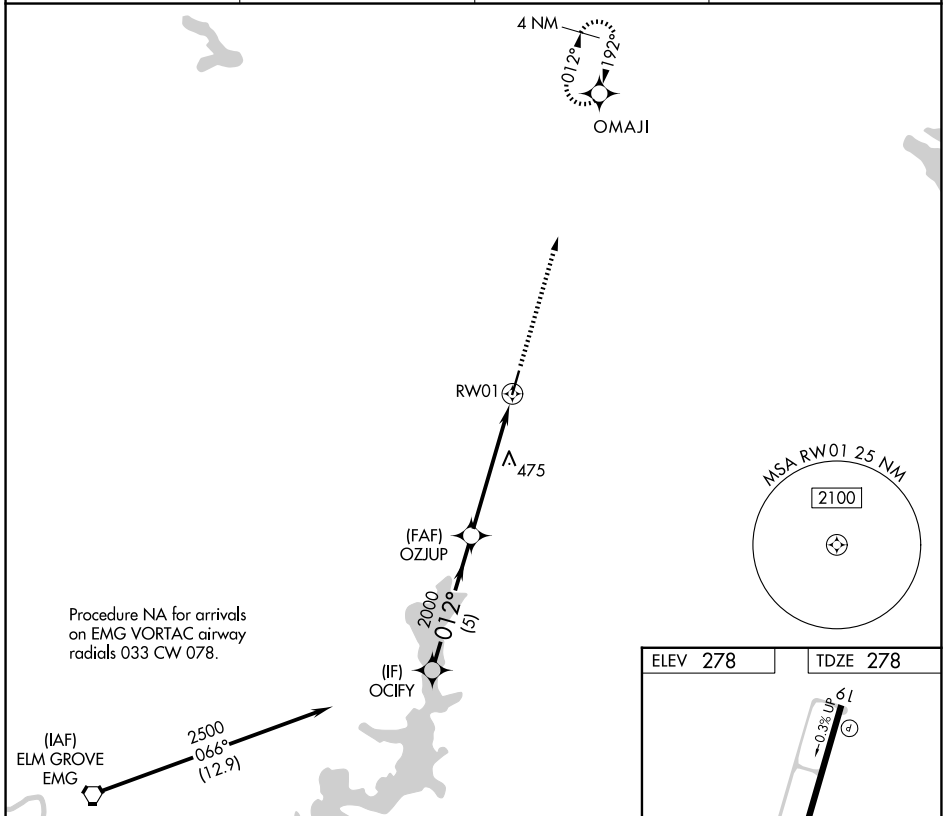
# RNAV (GPS) RWY 1

MINDEN (MNE)

**⚠** When VGSI inop, procedure NA at night. DME/DME RNP-0.3 NA. Helicopter visibility reduction below 1 SM NA. When local altimeter setting not received, use Barksdale AFB altimeter setting; increase all MDA 80 feet, increase LNAV visibility Cats C/D ¼ SM and Circling visibility Cats C/D ¼ SM.

**MISSED APPROACH:** Climb to 2500 direct OMAJI and hold.

AWOS-3PT <b>119.325</b>	SHREVEPORT APP CON <b>123.75 360.725</b>	GCO <b>135.075</b>	UNICOM <b>122.8 (CTAF)</b> <b>📻</b>
----------------------------	---	-----------------------	--



CATEGORY	A	B	C	D
LNAV MDA	780-1	502 (600-1)	780-1 $\frac{3}{8}$	502 (600-1 $\frac{3}{8}$ )
CIRCLING	780-1 502 (600-1)	820-1 542 (600-1)	1060-2 $\frac{1}{4}$ 782 (800-2 $\frac{1}{4}$ )	1060-2 $\frac{1}{2}$ 782 (800-2 $\frac{1}{2}$ )

SC-4, 14 MAY 2026 to 11 JUN 2026

SC-4, 14 MAY 2026 to 11 JUN 2026