

VORTAC EIC <b>117.4</b> Chan <b>121</b>	APP CRS <b>099°</b>	Rwy Ldg TDZE Apt Elev <b>N/A</b> <b>N/A</b> <b>278</b>
---	------------------------	--

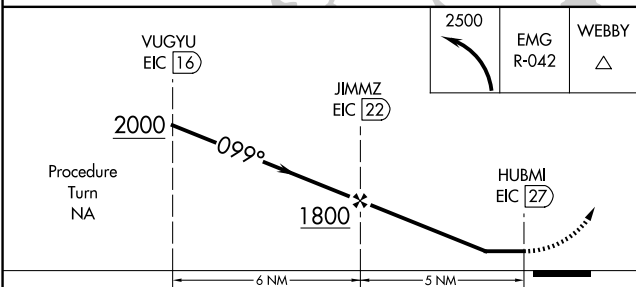
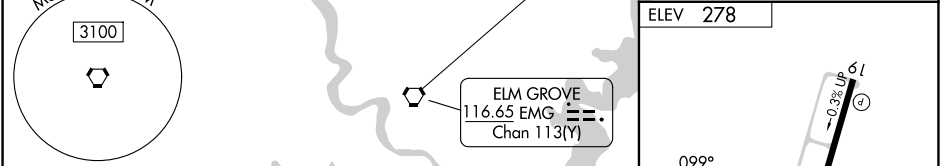
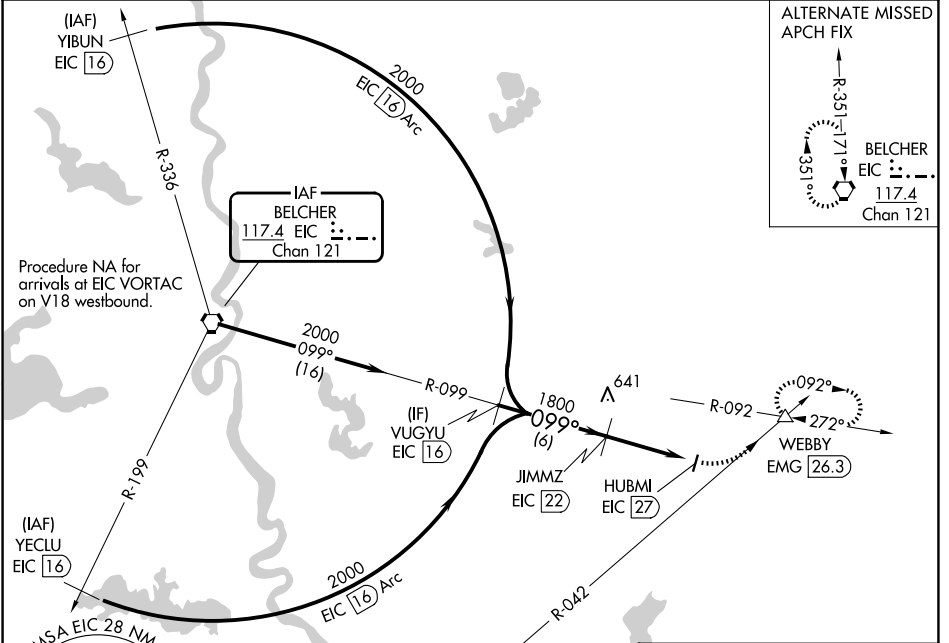
# VOR/DME-A

MINDEN (MNE)

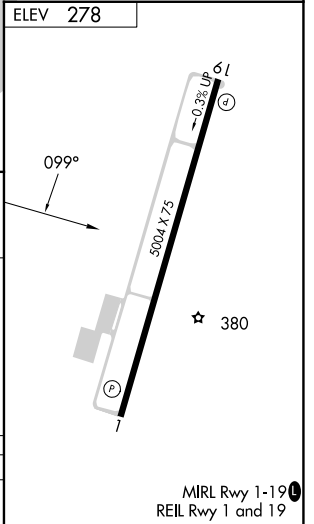
**⚠** When VGSI inoperative, procedure NA at night. When local altimeter setting not received, use Barksdale AFB altimeter setting. Visibility reduction by helicopters NA.

**⚠** MISSED APPROACH: Climbing left turn to 2500 and EMG VORTAC R-042 to WEBBY INT/EMG 26.3 DME and hold.

AWOS-3PT <b>119.325</b>	SHREVEPORT APP CON <b>123.75 360.725</b>	GCO <b>135.075</b>	UNICOM <b>122.8 (CTAF)</b> <b>📻</b>
----------------------------	---	-----------------------	--



CATEGORY	A	B	C	D
CIRCLING	1540-1¼ 1262 (1300-1¼)	1540-1½ 1262 (1300-1½)	1540-3	1262 (1300-3)



SC-4, 14 MAY 2026 to 11 JUN 2026

SC-4, 14 MAY 2026 to 11 JUN 2026